

COMPETITION RULES FOR NBCC

January 3, 2017

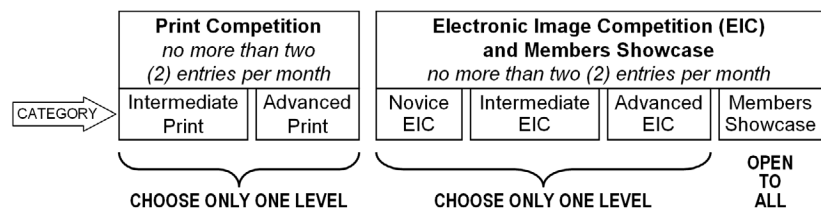
ALL ENTRANTS, BY THE ACT OF SUBMITTING IMAGES, ACKNOWLEDGE THAT THEY HAVE READ AND AGREE TO ABIDE BY THE LETTER AND THE "SPIRIT" OF THESE RULES:

- Scheduled Competitions.** A competition will be held monthly September through May in each competition category (see Rule 7) in which at least three entries are submitted. One-third of the entries in a competition category, rounded to the nearest third, will receive awards: 1st, 2nd, and 3rd place, with the remaining awards given Honorable Mention. When only one or two entries are submitted in a competition category, no award will be given, but the judge will be asked to critique the images. ~~A member who enters an image is expected to attend the competition meeting.~~ Participation in NBCC Competition (including Members Showcase) is reserved for members who regularly attend the competition meetings they enter. If you cannot attend a competition meeting, you must provide information about your images to a surrogate (an attending member) who will speak for you in case the entries place or a question is raised.
- Eligible Members.** Entrants must be members of the North Bethesda Camera Club with dues paid in full.
- Eligible Entries.** Each image entered must consist solely of photograph(s) captured by the member using a camera. For entries into the five competition categories (see Rule 7), the photographs must have been captured no earlier than the date specified in the competition assignment. Date restrictions do not apply to the Members Showcase.

The following examples are not eligible for any competition:

- an image with any portion photographed or modified by someone other than the member;
- photographs of two-dimensional works by others, such as prints and paintings, except as a minor part of the member's composition;
- image elements not of photographic origin including text, lines or shapes, with one exception: one thin line surrounding the entire image and colored black, white, or neutral gray may be added;
- anything scanned other than the member's photographic print or film.

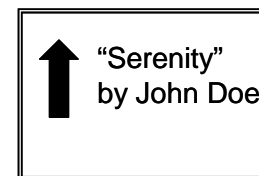
- Processing.** Standard commercial processing and printing may be performed by an outside service. However, any custom processing, manual optimization, and image manipulation must be performed by the member. For example, optimization performed by professionals or expert friends could give an unfair advantage, and is prohibited. Manipulation is neither required nor prohibited. "Creative" digital filters that manipulate existing photographic pixels (e.g., brush strokes, posterize, add noise) are permitted. Digital filters and painting techniques that add new image elements in violation of Rule 3 are prohibited; this includes applying textures not originally photographed by the member.
- Number of Entries.** Each member may submit no more than two (2) prints and no more than two (2) electronic images (including showcase) per month. ~~The penalty for violating this rule will be the disqualification (forfeiture of awards and points) of all of that member's entries for that month.~~
- Repeat and Similar Images.** An image may be entered into monthly competitions and/or Members Showcase no more than once per month, no more than three (3) times ever; and never after the image wins any NBCC competition award, including Honorable Mention. A "closely similar image" (one that depicts a similar subject from a similar perspective and under similar circumstances) is considered to be the same image under this rule. For example, photographs with only minor changes in the scene, composition, perspective, lighting, exposure and treatment are treated as the same image for repeated entry purposes. ~~The penalty for violating this rule is disqualification (forfeiture of awards and points) of the original and repeated entries for the current competition year.~~
- Categories.** There are five competitive categories (two print and three EIC) and one showcase. The competitions have published date restrictions and monthly assignments, and awards are given. The Members Showcase is noncompetitive (no awards), has no date restrictions or monthly assignments, and accepts electronic images (only) from members at all capability levels; all other rules apply.



8. **Novice, Intermediate and Advanced Levels.** The five competitive categories described in Rule 7 are divided into multiple levels to foster competition among members of similar capability: Novice, Intermediate, and Advanced. The term “Novice” does not imply beginner status. There is no Novice Print category. The Intermediate Print category is intended for all print competitors below the Advanced level. Members determine for themselves at which level they will compete depending on their capabilities, and are encouraged to settle into the appropriate levels and remain there for the duration of the competition year. A member may compete at one level in Prints and a different level in EIC, but not at multiple levels within Prints or at multiple levels within EIC. For the Year-End Competition, Intermediate and Advanced Print winners are combined and judged together, as are Novice, Intermediate and Advanced EIC winners. Star Points are earned only for winners in Advanced categories. Levels do not apply to the Members Showcase, which is open to members of all capabilities.

9. **Print Presentation.** The image (as presented for competition) may be no smaller than 80 square inches in area (for example, 8” x 10”). Panoramic prints may be creatively cropped as long as no side is less than 5 inches in length. An optional mat may cover part of the 80 square inch minimum area with up to 1/4 inch border around the image. The print must be securely mounted on a rigid board having thickness 1/4 inch or less. Print and board must not exceed 16 by 20 inches. If a mat is used, it also must be securely attached to the front of the mount board at both top and bottom. The print must not be framed. Identifying marks such as name or title must not appear on the front.

The back of the print mounting board must be free of all conflicting markings. The Member’s name and image title must be very clearly printed on the back of the mount, with a prominent arrow indicating the “up” orientation. The print will be displayed as indicated by the arrow. Nothing is permitted to be on the front or back of the board that could possibly damage another print (such as metal, exposed adhesive, loose labels or tape).



10. **Electronic Image Submission.** Electronic images are computer files which are presented on screen using a digital projector. The Electronic Image Submission Guidelines and the Electronic Image Archive Policy are posted on the NBCC web site (www.nbccmd.org) and are subject to revision. Entrants must comply with all guidelines and consent to all policies, and should review the latest information before submitting.
11. **Year-End Competition.** Winning electronic images are automatically submitted for the year-end competition by the Competition Committee. Prints submitted to this competition must be the exact same prints as originally presented with the NBCC award sticker on the back of the mounting board.
12. **Sanctions.** Violations are determined by the Competition Committee or Chairperson. Violation of any competition rule will result in the disqualification of the entry. Entries that are disqualified retroactively will forfeit awards and points. The penalty for violating Rule 5 will be the disqualification (forfeiture of awards and points) of all of that member's entries for that month. The penalty for violating Rule 6 is disqualification (forfeiture of awards and points) of the original and repeated entries for the current competition year. Any entry disqualified after judging begins will still count as having been entered for purposes of Rule 6. Those who are chronically absent may be asked by the Board of Directors to stop entering during that Club year. The Board of Directors may take further corrective action to maintain fairness for all competitors. Prior to entering, each member is responsible for resolving any uncertainty, such as a questionable entry or clarifying a rule, with the Competition Committee or Chairperson.