



# The Lens and Eye

North Bethesda Camera Club

Volume 47 Number 10 <http://www.nbccmd.org>

Editor: José Cartas

[nbccleandeye@yahoo.com](mailto:nbccleandeye@yahoo.com)

Summer, 2012

## Calendar

### July, 2012

- 10 Community Outreach – PCR: 7:00 pm.  
Joe Razza Photo Exhibit.
- 18 Board Meeting: 7:30 pm.

### August, 2012

- 12 Field Trip: Butterflies at Brookside Gardens.
- 19 NBCC Picnic: 4:00 pm; Anita van Rooy's.

### September, 2012

- 5 Competition Night: 7:30 pm.
- 12 Newcomers' Reception: 7:00 pm.
- 12 Program Night: 7:30 pm.
- 19 Board Meeting: 7:30 pm.
- TBD Field Trip. TBD.

# Annual Awards Event

Wednesday, June 6 was the date of the annual NBCC Awards Event. It was held again this year at the Asbury Methodist Village in Gaithersburg. Upwards of 90 people attended. An enjoyable and tasty buffet was catered by the Asbury staff. After the meal, the group assembled in the auditorium for the awards program. Club President Bob Dargel served as the MC and Judy Switt coordinated the distribution of awards.

The award winners are listed on page 12 of this issue.

Always a highlight of the program was the presenting of the Razza Award. The Joe Razza Special Service Award is given "in recognition of dedicated and outstanding service to and through the North Bethesda Camera Club in a manner that honors Joe's memory." The Club President has the responsibility of selecting the award recipient.

Past recipients of this award were Tom Field (2005 and 2007), Judy Switt (2008), Stu Mathison (2009),

*Cont'd on p.11*

## NBCC Annual Picnic, Sunday, August 19

The NBCC annual picnic will be held, as it has for the past several years, at Anita van Rooy's home, 13932 Esworthy Road, Potomac, MD, on Sunday afternoon, August 19. The festivities will start at 4:00 pm and will be held rain or shine. Members, spouses and significant others are invited. Bring your swim suits as swimming is available in the beautiful pool.

Five dollars per person will be collected at the picnic to cover food costs. Participants are asked to bring a dish to share, such as fruits, salads, pastas, veggies, desserts, etc. Hamburgers, hotdogs and

'fixens' will be provided. Please RSVP to Judy Switt by Wednesday, August 15 to let her know what dish you plan to bring and she can confirm that it fits into the "grand plan." She can be reached at work at (703) 938-3990, or at [judy\\_switt@yahoo.com](mailto:judy_switt@yahoo.com). Also, be sure to **bring a chair** for each attendee.

**Directions from Rockville Area:** Follow Route 28 west (also known as Darnestown Road) about 9 miles from I-270. Turn left onto Seneca Road (Route 112) at the traffic light. Esworthy Road is the fourth left, about ½ mile, off Seneca. You will

see Anita's rusty mailbox on the right at **13932**. The house is out of sight from the road, set back at the end of the long driveway.

**From Virginia or DC:** From the Capital Beltway or Wisconsin Avenue, take River Road (Route 190) west through the village of Potomac and continue about 6½ miles. Turn right on Esworthy Road and drive less than two miles to **13932** and the rusty mailbox on the left.

**Please drop off your items by the garage and then park along the driveway.**

## Member Profile

### Al Tanenholtz



In the 33 years he was employed by the U.S. Patent Office, our new member, Al Tanenholtz, was witness to a number of landmark innovations in genetic engineering and molecular biology. Al had always been interested in science, particularly biology, during his years growing up in Cambridge, MA. By 1956, he had earned a Bachelor of Science Degree in microbiology from the University of Massachusetts, Amherst and was offered a job by recruiters from the U.S. Patent Office.

Initially, Al worked in the food, beverage, and fermentation group, investigating and granting patents on new foods, flavorings, and beverages. Between 1974 and 1988, however, he worked on a controversial application by Cohen and Boyer of Stanford University concerning recombinant DNA. After a long investigation process, a patent was issued for a process to replicate and modify human and animal DNA and the resulting microorganisms containing the modified DNA. It was literally the foundation of modern genetics and the biotech industry. He subsequently issued many patents including the genes for human growth hormones and for erythropoietin to Genentech and Amgen, respectively.

In 1980, Al reviewed the "Chakrabarty Case," where the Supreme Court ruled that living things could be patented as long as they had been created by "the hand of man." In that case, a scientist sought to patent oil-eating microorganisms containing a mixture of rings of DNA called plasmids, to clean oil spills. Since the bacterial combination did not exist in nature, the court ruled it to be patentable. In 1984, Al worked on a patent entitled "Transgenic Non Human Mammal," known as the Harvard Mouse. Scientists Leder and Stewart of Harvard University contrived, with the aid of DNA manipulation, to design a mouse that would be receptive to human cancer cells so that future tests of drugs could be done on cancerous mice and not humans. They were awarded a patent on the process and on the mouse, the first time a living creature had been so approved.

After 33 years with the Patent Office, Al retired in 1989. He was then employed, for another 18 years, by three law firms who used his knowledge of patent procedures to assist them in various cases. He made his final retirement from the work force in 2010.

While working at the Patent Office and living in Maryland, Al became a member of the Silver Spring Camera Club. He took courses with Marty Miller at the Department of Agriculture Graduate School and built a darkroom in his basement, which he used between 1969 and 1974. In 1973, he was named Advanced Monoprint Photographer of the Year at the Silver Spring Club. In those days, he shot with a Mamiya C330 medium format camera and did his own developing, printing, and mounting. His favorite lenses were a 28mm, a 55mm, and a 135mm telephoto. When digital cameras became available he purchased a

one pixel early Kodak model for \$1,000. He still has this camera.

Al temporarily withdrew from photography in 1974 because of recurrent asthma attacks. Now his asthma is under control and he is back to making images. As his "pocket camera" he carries a Canon SD700IS Elph, and for his main camera he uses a Nikon D5100. A current favorite lens is the Tamron 18-270mm. Marvin Sirkis and Stuart Glickman recruited him for the NBCC and he is a new member this year.

Al's first wife, Hilda, died in 1961, leaving him two sons: Eric, who is now senior director of the consulting firm RDA Corp and lives in Columbia, MD, and Bruce, now a senior tech developer for the Netsuite Corp., currently living in Denver, CO. He has been married for 30 years now to his second wife, Lyn, a retired Social Worker who he met at a Parents Without Partners gathering. Lyn's daughter Aimee is a managing director for J.P. Morgan in New York City. From the three children, the Tanenholtzes have five grandchildren.

Al and Lyn have traveled extensively, and Al has documented their adventures with his images. They have fond memories of a 23-day China tour, trips to South Africa and to Japan, and a week spent in Seoul, where Al was sent by the U.S. Patent Office to speak on genetic engineering. Lyn prefers not to fly now, however, so Al is looking into trips they might take as cruises or by train. He was also quick to remark he might not need to travel to find great subjects. One of his best images, "Raindrops on Windows," which won first place in the Novice Unrestricted Print category in the December 2011 competition, was taken of a window in his own home.

*Text and Photo by Jean Hanson*

## 2012-2013 Board of Directors

In accordance with Article VII of the Club's constitution, during the Program Night of May 23, 2012, the following members were elected by acclamation to serve as NBCC's officers for the 2012-2013 Program Year:

Carol Lee, President  
David Davidson, Vice President  
Bruce Cyr, Secretary  
Bill Olson, Treasurer

These members will take office effective July 1, 2012 and serve for one year. Congratulations to the new officers and thanks to the outgoing officers, who have served us so well during the past twelve months!



### **NBCC Approved Budget 2012-2013**

<b>Starting Reserves</b>	<b>\$8,524</b>
<b><u>Income</u></b>	
151 members at \$50	\$7,550
10 L&E Mailings at \$25	\$250
Workshops	\$350
<b>Total Income</b>	<b>\$8,150</b>
<b>Starting Income + Reserves</b>	<b>\$16,674</b>
<b><u>Expense</u></b>	
Hospitality	\$250
Judges Gifts	\$40
Special Gifts	\$100
Speakers & Judges Meals	\$270
Speakers & Judges Fees	\$1,000
Exhibit Expense	\$200
Outreach	\$200
Education	\$350
Awards Banquet	\$750
Photo Essay	\$250
Photo Essay Software	\$100
Lens And Eye	\$350
Meeting Hall Rent	\$4,250
Liability Insurance	\$275
Membership Expenses	\$350
Name Tags	\$30
PSA Dues	\$45
Treasurers Expense	\$25
<b>Total Expenses</b>	<b>\$8,835</b>
<b>Withdrawal from Reserves</b>	<b>(\$685)</b>
<b>Ending 2012-2013 Balance</b>	<b>\$0</b>

Summer, 2012

## Splinters from the Board, May 2012

*Bob Dargel, President*

**2013-14 competition assignments.** The Board approved the list of competition assignments for the 2013-14 program year. Topics include city life, night photography, motion, slanted/diagonal lines, entrances/exits, and garden. You can find a detailed list of the competition assignments on page 17 of this issue. Details will also be included in the 2012-13 membership booklet.

**Meeting room rent increase.** NBCC holds its meetings at the Faith United Methodist Church in Rockville. We have been notified by the church that starting this fall the rent will increase from the current \$160 per meeting to \$170. The dues for the coming year were set prior to receiving this notice and this increase may affect future Club dues. There has not been an increase in Club dues since 2005.

**New calendar format on the website.** In an attempt to keep the Club activities calendar more up to date, its format on the website has been changed to a more user friendly format that will be easier to keep current. Look under the Activities drop down menu to find the link to the calendar.

**2012-13 annual budget.** The budget for the coming program year was approved and is summarized in this issue of *The Lens and Eye*. Note that the Club is maintaining a \$7,000 equipment reserve in case the projector or other equipment needs to be replaced.



### Adjustments to the 2011-2012 Booklet

New e-mail address:

Kathleen Blake	<a href="mailto:Kathleen.Blake@nrc.gov">Kathleen.Blake@nrc.gov</a>
Ken Briefel	<a href="mailto:kbriefel@aol.com">kbriefel@aol.com</a>
Ken Goldman	<a href="mailto:Ken.Photo.Geek@gmail.com">Ken.Photo.Geek@gmail.com</a>
Alex Guo	<a href="mailto:yiqung@gmail.com">yiqung@gmail.com</a>
Eileen McClatchy	<a href="mailto:emcclatchy3@gmail.com">emcclatchy3@gmail.com</a>
Dan McDermott	<a href="mailto:MapMcD@verizon.net">MapMcD@verizon.net</a>
Cheryl Naulty	<a href="mailto:cherylmd@verizon.net">cherylmd@verizon.net</a>
Meryl Silver	<a href="mailto:merylsilverphotography@gmail.com">merylsilverphotography@gmail.com</a>
Beth Wensley	<a href="mailto:bgwensley@aol.com">bgwensley@aol.com</a>
Jean Yuan	<a href="mailto:Ji_Ying_Y@Yahoo.com">Ji_Ying_Y@Yahoo.com</a>

**NBCC Field Trip – June 29**  
**Cal Ripken Baseball League**  
**Shirley Povich Field**

*John Barnes*

The NBCC Field Trip for the month of June is set for a visit to Shirley Povich Field to photograph baseball action featuring the Bethesda Big Train. The date is Friday, June 29, with a rain date of June 30. The game starts at 7:30 pm, but I plan to get there by 7:00 pm to see if I can photograph batting practice or other warm-up activity. Tickets are required. Adults go for \$9 and \$5 for individuals 65 years of age and older. On-line sales may incur handling fees. Indications are that the Big Train draws a good crowd. I am not sure whether tickets are readily available at the gate.

The published time of sunset for those dates is 8:38 pm, which means that one ought to be able to catch action without artificial light for a while. The Cal Ripken League formerly had its games in the afternoon, but they changed to evenings to reduce the heat stress on players. According to its official website, "The Cal Ripken Collegiate Baseball League is an amateur summer wooden bat baseball league comprised of ten teams in the Baltimore-Washington Metropolitan Region."

Shirley Povich Field is located at 10600 Westlake Drive in Bethesda. It is part of Cabin John Regional Park. Click on the "Povich Field" link on the Big Train home page at [www.bigtrain.org](http://www.bigtrain.org) for directions.

Please contact me at [jdbscience@me.com](mailto:jdbscience@me.com) if you need more information.



Photo © John Barnes

**NBCC Field Trip – August 12**  
**Wings of Fancy – Photographing Butterflies**  
**Brookside Gardens Conservatory**

*Raymond Ao*

The upcoming August field trip offers our Club members the opportunity to photograph butterflies at Brookside Gardens' South Conservatory in Silver Spring on Sunday, August 12, from 8:00 to 10:00 am.

At the conservatory, people can enjoy seeing hundreds of African, Asian, Costa Rican, and North American species of butterflies flying freely inside the conservatory. Because there are many other people and kids around, and no tripods are allowed during general admissions between 10:00 am and 4:00 pm, you really cannot get any good shots of the butterflies. In order to allow for quality photography, we have made arrangements to join the "Focus on Butterflies" sessions offered by the Montgomery Parks in August. For a charge of \$30 per person, we are allowed to photograph, with tripod, in the Butterfly House between 8:00 and 10:00 am with a maximum of ten photographers for the session.

This field-trip was announced via GordieGram in mid-March. Within a day, all ten available slots were filled. For those who missed joining us but want to join other "Focus on Butterflies" sessions on their own, they can do so by checking out the link below for other available dates:

[www.parkpass.org/Activities/ActivitiesDetails.asp?ProcessWait=N&aid=25](http://www.parkpass.org/Activities/ActivitiesDetails.asp?ProcessWait=N&aid=25).

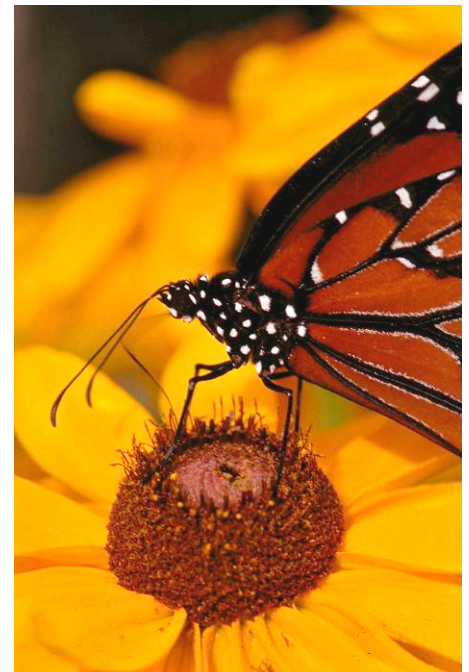


Photo © José Cartas



# PSA News

Judy Burr, NBCC PSA representative

**P**SA President, John Davis, APSA, PPSA, describes the mission of PSA in his regular column. He reminds us that the purpose of PSA is: education, information, inspiration and opportunity, and continues to say that it is important for PSA to keep evaluating what it offers so that programs and activities are up to date while photography is evolving at a faster pace than ever. PSA is seeking new and better ways to benefit individual members and club members as well as chapters and councils. Online education is growing with more courses being offered as fast as they can be put together.

The Electronic Imaging Division has just formed its first cell phone study group and will probably add more as interest increases. Study groups are offered in all the Divisions and are a great way to learn from others and have your work critiqued. Commenting on others' work helps you improve your own. The May issue of the *PSA Journal* includes a review of the iPhone 4S. So, for those who think PSA is stuck in the past, it is making efforts to keep up with technology by offering courses and mentors for individual members.

The software review is on NIK's Color Efex Pro 4, which adds new filters as well as filter stacking. Book reviews cover: *Exposure: Photo Workshop*, *Black and White: From Snapshots to Great Shots*, *The Landscape Photography Field Guide*, and *The Photoshop Darkroom 2: Creative Digital Transformation*.

"Drury's Digital Diary," a regular column in the magazine, covers how to use the tools located below the histogram in the Develop's right panel in Lightroom, and also the basic panel. Erik Kissa's column on equipment covers camera phones and projectors. Another column discusses the benefits of social networks.

Articles of interest include one on Patagonia by Nancy Wolejsza, former NBCC member and president (she has now re-joined the Club). Other articles are "The Digital Artist Within," "A Day at the Zoo," and "Hummingbird Photography." Maria Drumm, who is Chairman of the Photo Travel Division and who presented a program last fall, recently had some of

her prints displayed at a gallery in Japan. She mailed the prints and they framed them.

This issue of the *Journal* provides information on the main speakers for this year's Conference in San Francisco in September. They are being sponsored by Canon, Tamron, and Hunt's Photo and Video.

Here are some events of interest for this summer. From June 8 to 10, 2012, the Berks Photographic Society holds its 53<sup>rd</sup> Annual Photographic Conference at the Boehm Science Building, Kutztown University, Kutztown, PA. For full information visit <http://www.berkscamera.org/annual-conference>. The New England Camera Club Conference will take place from July 13 to 15, 2012, at the University of Massachusetts, Amherst, MA. Saturday night featured presenter is Joe McNally (sponsored by Nikon). The conference includes 29 speakers, four pre-conference workshops (Photoshop Layers, Lightroom, Preparing Images for Competition, and Judging). There will be photo-ops of cruise cars and portraits with children models. For more information and to get a registration form go to <http://www.neccc.org> or contact [RNECCC@aol.com](mailto:RNECCC@aol.com) for a flyer.



## Focus on NBCC Members

### **Alan Sislen featured in *élan* magazine**

An article "A World of Beauty – Recording the Moods of Nature," by Janet Scharp, features the photographic work of NBCC member Alan Sislen. *élan* is a publication that is not for sale on the newsstands, but is mailed to tens of thousands of households in Northern Virginia.

The main subject of the article is Alan's exhibit "Variations" at the Torpedo Factory Art Center, where he features ten large panoramic prints, all showing the same scene of trees, all taken at sunrise, but at different times of the year from his back deck, with the tripod placed on the same mark. But the article expands on Alan's landscape (and also architectural) photography around the world, his mastery of printing, and his teaching skills.

A highlighted quote in the article perfectly defines Alan's passion for photography: "I always enjoyed photography. It was always a great creative outlet for me.... Now it consumes me."

**“Photographic Visions” – A photography exhibit featuring seven area photographers, including new works by Meryl Silver**

You are invited to the exhibit “Photographic Visions” at the Ratner Museum, 10001 Old Georgetown Road, Bethesda, MD. The exhibit features photographs by seven local photographers, including NBCC member Meryl Silver.

This exhibit will run from June 28 through July 29, 2012. Gallery hours are noon to 4:00 pm, Monday to Thursday, and 10:00 am to 4:30 pm Sundays. An opening reception will take place on Sunday, July 8 from 1:30 to 3:30 pm.



Photo © Meryl Silver

**Judy Burr receives PSA Star Awards**

NBCC member, and PSA representative, Judy Burr recently received her first and second Star Awards from the Electronic Imaging Division and also her first and second Star Awards from the Photo Travel Division of the Photographic Society of America. Acceptances and Honorable Mention awards were received from the United States as well as from Norway, Germany, France, Serbia, Holland, and India. She is waiting for the results for three Stars earned in the Color Projected Imaging Division to be reported.

NBCC’s star awards are based somewhat on the star system used in PSA. However, in PSA a member must compete in PSA recognized exhibitions, keep careful records and submit an application as required for each Division. Throughout PSA, the first star requires six different titles and 18 acceptances, and the second requires 12 different titles and 36 acceptances, and the numbers go up from there. The people in charge of awarding the stars check the reports they receive against what a member submits; sometimes the maker receives an official report long

before PSA does. Exhibitions are held around the world and each sets its own requirements as to categories, definitions (in accordance with PSA rules), sizes, and method of titling. All this information is provided with their applications. Thanks to the Internet, it is much easier to enter exhibitions now than in the past—except for prints. There are still a few that require entries to be submitted on a CD. Cost varies by location and the number of categories entered.



**Moonrise/Moonset Times for Full Moons in the Washington Area**

Date	Moonrise	Moonset
<b>2012</b>		
Jun. 4	7:57 pm	4:48 pm
Jul. 3	7:31 pm	4:38 am
Aug. 2	7:24 pm	5:45 am
Aug. 31	6:25 pm	5:40 am
Sep. 30	5:56 pm	6:32 am
Oct. 29	5:02 pm	6:21 am
Nov. 28	5:01 pm	7:01 am
Dec. 28	5:29 pm	7:20 am
<b>2013</b>		
Jan. 27	6:16 pm	7:11 am
Feb. 25	6:07 pm	6:16 am
Mar. 27	7:07 pm	5:50 am
Apr. 25	7:05 pm	4:59 am
May 25	8:08 pm	5:12 am
Jun. 23	7:48 pm	4:58 am
Jul. 22	7:13 pm	4:54 am
Aug. 21	7:03 pm	6:05 am
Moonset corresponds to the following day.		

Source: [www.usno.navy.mil](http://www.usno.navy.mil)

PCR & the North Bethesda Camera Club

## Phabulous Photographers

Present

### The Annual Joe Razza Photo Exhibit and Reception

Tuesday, July 10, 2012, 7:00 – 8:00 pm.

Multi-Purpose Room

### The Kennedy Institute

1010 Grandin Avenue, Rockville, MD 20851

All PCR members, families and friends  
are invited; and all members of North  
Bethesda Camera Club

Please, join us for this special  
event!

### What is PCR?

In an ongoing outreach program, NBCC works with Potomac Community Resources, Inc. to teach basic photographic techniques to PCR's members. PCR is a private, non-profit, non-sectarian organization that encourages and supports the integration of persons with developmental differences into the life of the community.

"Phabulous Photographers" was formed twelve years ago by NBCC under the guidance of member Joe Razza.

They currently meet at The Kennedy Institute, 1010 Grandin Ave, Rockville, MD 20851 on the first Tuesday of each month from 7:00 to 8:00 pm.

Contact an NBCC/PCR committee member for more information about this enjoyable and worthwhile activity.

(Joel Hoffman, Judy Switt, Bob Peavy, Chris Hanessian, Ron Dietrich, José Cartas, Meryl Silver)

### Exhibits

#### The Deep Element: Photography at the Beach

This exhibition brings together photographs of the beach from the late 19<sup>th</sup> century through the present day, revealing the many ways that artists have explored and been inspired by this rich subject. Drawn primarily from the Gallery's collection and grouped around common themes—such as seascape, abstraction, and beach culture—"The Deep Element" features works by Harry Callahan, Mitch Epstein, Nicholas Nixon, Aaron Siskind, and Garry Winogrand, among others.

At the Corcoran, through October 14. For more information visit [www.corcoran.org](http://www.corcoran.org).

#### Pushing Boundaries: Portraits by Robert Weingarten

Robert Weingarten's 60x90-inch photographs, which he calls translucent composites, are built from multiple digital images that his famous subjects have identified as representing what makes them who they are. Weingarten's photographic biographies are complemented by a selection of historic photographs from the National Museum of American History's Photographic History Collection that depict ordinary people with the tools of their trade, photographs of well-known subjects, photographs used to record achievements, and other combination prints.

At the S. Dillon Ripley Center, from July 2 to October 14. For more information visit

[www.si.edu/museums/ripley-center](http://www.si.edu/museums/ripley-center).

#### Phoneography

Photoworks is pleased to present **Phoneography**, an all-out celebration of cell phone photography. Young photographers from around the Metro Washington Area have competed in a Photoworks' juried exhibition. This exhibit showcases their award-winning efforts.

At Photoworks, in Glen Echo Park, from July 27 to August 27. For more information visit

[www.glenechophotoworks.org](http://www.glenechophotoworks.org).

#### Making Science Visible – The Photography of Berenice Abbott

This exhibition explores how the photography of Berenice Abbott (1898-1991) has been used in both artistic and scientific contexts. Abbott's images are important in art, science, documentaries, and the history of science education.

At the University of Virginia Art Museum, from August 24 to December 16. For more information visit

[www.virginia.edu/artmuseum](http://www.virginia.edu/artmuseum)

# Results of Competition for May 2012 – High Key or Low Key

## Competition Judge: Jill Bochicchio

### Prints

#### Novice Traditional – 4 entries

1<sup>st</sup> Al Tanenholtz Three Eggs

#### Advanced Traditional – 14 entries

1<sup>st</sup> Dawn Sikkema The Sea Urchin  
2<sup>nd</sup> Bill Olson Darken Hallway  
3<sup>rd</sup> Willem Bier Sam  
HM Judy Burr Red Brush  
HM Jean Yuan Lily

#### Novice Unrestricted – 6 entries

1<sup>st</sup> Marvin Sirkis Kim  
2<sup>nd</sup> Al Tanenholtz Mushrooms

#### Advanced Unrestricted – 9 entries

1<sup>st</sup> Chris Hanessian Low Key Lady  
2<sup>nd</sup> Roy Sewall Desert Floor, Badlands  
3<sup>rd</sup> Bill Seelig Nude



### **Ask Tim Grey**

**Could you please explain the procedure used to blend two images in order to utilize the highlights from one exposure and the shadows from another?**

The overall process is relatively simple in concept, but can be a little complex in actual practice, depending on the nature of the scene you are photographing.

The first step is to create a layered document that includes both of your exposures. If you are using Adobe Bridge you can simply select both images and then choose Tools > Photoshop > Load Files into Photoshop Layers from the menu. If you are using Lightroom you can select the images in the Library module and then choose Photo > Edit In > Open as Layers in Photoshop.

The next step is to blend the two images together in Photoshop. In concept this is relatively simple. Start by clicking on the thumbnail for the top-most layer on the Layers panel. Then click the Add Layer Mask button (the circle-inside-a-square icon) at the bottom of the Layers panel to add a layer mask to this image layer. Now choose the Brush tool, and press the letter D on the keyboard to set the colors to their default values of black and white. You will generally want to use a soft-edged brush, setting the Hardness value on the brush pop-up on the Options bar to a value of 0%.

### Electronic

#### Novice Traditional – 17 entries

1<sup>st</sup> Gail Bingham Sand Patterns  
2<sup>nd</sup> Claudia Seelig Pretty in White  
3<sup>rd</sup> Ira Adler Cloisters, Toledo Cathedral  
HM Ken Goldman Maiden Voyage  
HM Chet Stein Egret and Crayfish  
HM John Willis Tree Peony with Golden Stamens

#### Advanced Traditional – 17 entries

1<sup>st</sup> Jack Rosenberg Squeezing in the Dark  
2<sup>nd</sup> Alex Guo Departing  
3<sup>rd</sup> Dawn Sikkema White Sands  
HM Judy Burr Old Chair  
HM Jay Gartenhaus Let It Snow  
HM Janet Myder-Hammack Reflections

#### Novice Unrestricted – 8 entries

1<sup>st</sup> Stuart Glickman Jazz Festival  
2<sup>nd</sup> Steven Silverman Madison River Bison  
3<sup>rd</sup> Claudia Seelig Fire Hose

#### Advanced Unrestricted – 25 entries

1<sup>st</sup> Gordie Corbin Cygnet Siblings  
2<sup>nd</sup> Willem Bier Sisters  
3<sup>rd</sup> Lori Ducharme 34<sup>th</sup> Street Station  
HM José Cartas Shadow on a Sail  
HM Alex Hoffmaister Andi Dreaming  
HM Evelyn Jacob Railroad Locomotive Valves  
HM Dawn Sikkema Standing Alone  
HM Rebecca Tidman Snowy Day at the Ranch



You can press the letter X on the keyboard to switch between foreground and background colors. Painting with black on the layer mask will block pixels in the upper image layer, and painting with white on the layer mask will reveal pixels. So, set the foreground color to black, and then paint directly on the image (with the layer mask active) with black to block the areas that represent the "wrong" exposure for the top layer.

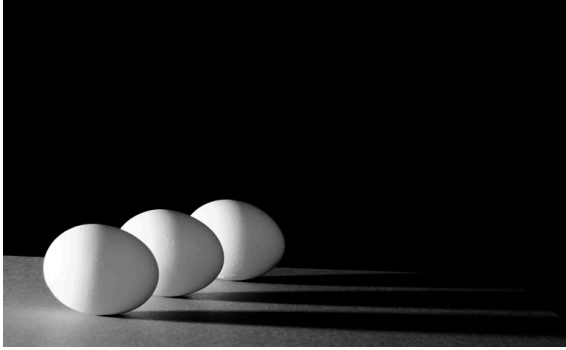
For example, if the upper layer on the Layers panel is the lighter of the two exposures, you would likely want that layer visible for the foreground but not for the sky. As such, you could paint with black on the layer mask in areas of the image where the sky is visible. The trick, of course, is to create a smooth and accurate blending between the two layers, which can take some practice.

Reproduced with Tim Grey's permission from his e-mail service ([www.timgrey.com](http://www.timgrey.com)).



## May 2012 Competitions — 1<sup>st</sup> Place Winners

### Print



*Novice Traditional – Al Tanenholtz – “Three Eggs”*



*Advanced Traditional – Dawn Sikkema – “The Sea Urchin”*



*Novice Unrestricted – Marvin Sirkis – “Kim”*



*Advanced Unrestricted – Chris Hanessian – “Low Key Lady”*

### Electronic



*Novice Traditional – Gail Bingham – “Sand Patterns”*



*Advanced Traditional – Jack Rosenberg – “Squeezing in the Dark”*



*Novice Unrestricted – Stuart Glickman – “Jazz Festival”*



*Advanced Unrestricted – Gordie Corbin – “Cygnets Siblings”*

## Cumulative Scores for 2011-2012; Through May, 2012

### Novice Traditional Prints

34 Al Tanenholtz  
28 Marcia Loeb  
28 Eric Schweitzer  
27 Mike Fleming  
27 Claudia Seelig  
21 Cheryl Naulty  
19 Gail Bingham  
18 John Barnes  
18 Steve Lapidus

### Advanced Traditional Prints

64 Chuck Bress  
46 Bill Olson  
27 Dennis Green  
19 Bill Seelig  
16 Dawn Sikkema  
15 Bruce Cyr  
15 Jean Yuan  
14 Art Hyder  
10 Barbara DeLouise  
9 Bob Dargel  
8 Willem Bier  
8 David Davidson  
8 Lester LaForce  
6 Judy Burr  
6 Carol Lee

### Novice Unrestricted Prints

39 Stuart Glickman  
28 Al Tanenholz  
19 Gail Bingham  
10 Marvin Sirkis  
9 Marcia Loeb

### Advanced Unrestricted Prints

55 Roy Sewall  
34 Willem Bier  
28 Bruce Cyr  
27 Judy Burr  
27 Bill Seelig  
22 Dawn Sikkema  
19 Jack Rosenberg  
10 Chris Hanessian  
9 Dan McDermott  
8 David Davidson  
6 Carol Lee  
6 Jean Yuan

### Novice Traditional Electronic

79 Gail Bingham  
68 Ira Adler  
56 Claudia Seelig  
52 Ken Goldman  
51 John Willis  
50 Chet Stein  
31 Nancy Brun  
30 Meryl Silver  
12 Beth Wensley  
10 John Pan  
8 John Barnes  
6 Marcia Loeb  
6 Cheryl Naulty  
6 Louise Roy  
6 Eric Schweitzer



### Advanced Traditional Electronic

67 Jay Gartenhaus  
57 Alex Guo  
36 Bill Olson  
27 Kent Mason  
26 Judy Burr  
25 Bob Peavy  
24 Jean Yuan  
16 Melissa Clark  
16 Art Hyder  
16 Jack Rosenberg  
16 Dawn Sikkema  
15 Jean Hanson  
12 Bruce Cyr  
12 Mark Segal  
10 Miranda Chin  
10 Beverly Gordon  
10 Rebecca Tidman  
10 Carol Lee  
6 Barbara DeLouise  
6 Stu Mathison  
6 Janet Myder Hammack  
6 Judy Switt

### Novice Unrestricted Electronic

54 Cynthia Hunter  
48 Stuart Glickman  
43 Claudia Seelig  
38 Martha Cain-Grady  
30 Cheryl Naulty  
27 Eric Schweitzer  
15 Steven Silverman  
10 Al Tanenholtz  
9 Marcia Loeb  
8 Stu Reiter

### Advanced Unrestricted Electronic

69 Lori Ducharme  
52 Gordie Corbin  
39 Evelyn Jacob  
36 Willem Bier  
34 José Cartas  
34 James Hammack  
25 Jim Hawkins  
24 Bruce Cyr  
24 Dawn Sikkema  
18 Alex Hoffmaister  
16 Bruce Davis  
15 Dick Pelroy  
14 Janet Myder Hammack  
14 Rebecca Tidman  
12 Judy Burr  
12 Beverly Gordon  
10 Carol Lee  
9 Les Trachtman  
8 David Davidson  
6 Melissa Clark  
6 Art Hyder  
6 Jo Levine  
6 Judy Manesh  
6 Allen Melser  
6 Jack Rosenberg  
6 Jean Yuan



"Sometimes I do get to places just when God's ready to have somebody click the shutter."

*Ansel Adams*



*"Altiplano Lagoons, Atacama" © José Cartas*

## **Annual Awards Event (cont. from p. 1)**

and Chuck Lee (2011).

José Cartas was the recipient of this year's award. In presenting the award, President Dargel highlighted José's background with the Club and spoke of his history and contributions to the Club:

"José has been a member of NBCC since 1997 and is a very accomplished photographer. He is a Sr. Economist with the International Monetary Fund and as such has the opportunity to share with the Club the photography from his travels around the world. Last year he was the Photographer of the Year in the advanced electronic category.

"José is an active supporter of the Club's officers and committees. When not travelling, he energetically participates with the NBCC contingent that works with the Phabulous Photographers group of developmentally disabled individuals. This outreach group is, of course, the one founded by Joe Razza.

"José's greatest impact on the Club has been his position as writer, editor, and publisher of the Club's award winning newsletter, *The Lens and Eye*. Since 2008 he has continually improved this publication while winning Photographic Society of America Club Newsletter awards along the way. José had the knack of soliciting articles from members and then editing them to show the author in the best light. Because of the availability of worldwide communications, members submitting work to be published would often receive e-mails from far away countries. Then, when *The Lens & Eye* was ready to be distributed, that too could just as well come from Argentina, Spain, or some other foreign country. He never used the excuse that he was on travel and could not get an issue out. His continuous e-mail reminders of deadlines kept all of us on track to have our items published on time. José's goal was to present, via *The Lens and Eye*, North Bethesda Camera Club in the best possible light and, in a very real way, make NBCC the best photography club in the greater D.C. area. José and his wife Sylvia will be moving to Germany this summer for one year, and he will relinquish his duties with *The Lens and Eye*. He is however retaining his Club membership and NBCC will then truly be an international photo club!

"Because of his contribution to the North Bethesda Camera Club and his dedication to making the Club's newsletter the very best that it can possibly be, the North Bethesda Camera Club 2012 Joe Razza Award is presented to José Cartas."

José was on business travel to Trinidad and Tobago

and could not attend the awards program. The award was accepted for José by last year's Razza award recipient, Chuck Lee.

After the presentations were completed, President Dargel thanked the officers, committee chairs, and the membership for their support over the two years of his presidency.



## **Year-End Competition Judge: Clarence Carvell**

*Bob Dargel*

It seems that the career of a photographer, or any artist, must consist of long lists of accomplishments that include exhibitions, writings, lectures and, most assuredly, association with some very talented artists who are hopefully better than they.

Though this may place him in good stead with his audience, the true test is a critical evaluation by his peers. With that as the guiding principle, Clarence founded the Maryland Photographic Alliance in February 1991, and since that day the group has met once a month to examine each others' work and to explore the meaning behind each individual's image making.

Coming from a very conservative northern New England background and a 35-year engineering career, the transition to artful image making was to be an awakening experience. After several years of practice in developing a style, Clarence realized the real joy of image making was to be found in the process of documenting the story of peoples' lives and accomplishments.

Clarence holds several degrees, including a degree in Fine Art Photography from the University of Maryland, Baltimore County, and through the last 18 years has studied with some of the finest image makers in the world. He has taught both traditional and digital image making at the college level and has become a popular motivational lecturer for photo groups and camera clubs, and an organizer of large photographic seminars. A documentary photographer by nature, his work is found mostly in historical archives, most notably those with an interest in the National Road where he has made over 8,000 images. His book *The National Road...a photographic journey* is available through Amazon.com, Barnes & Noble, and other area bookstores. Images from the National Road collection have been acquired by the National Road Museum, the Albin Kuhn Special Collections, and several special interest groups along the National Road.

# Results of Year-End Competition 2012

## Competition Judge: Clarence Carvell

### Traditional Prints

Mike Fleming	Early Bird
Steven Lapidus	Goal!
Bill Olson	Darken Hallway
Al Tanenholtz	Old Man and Horse
Dawn Sikkema	Fog in Sunrise, Asseateague
Bill Olson	Railroad Graveyard
Barbara DeLouise	Rusting Car
Carol Lee	Redwoods in the Fog
Arthur Hyder	Sandhills, 2011

#### **Traditional Print of the Year**

Bill Olson	Foggy Morning
------------	---------------

### Unrestricted Prints

Roy Sewall	Beauty and the Beast
Bruce Cyr	Blue Angels Line Up
Roy Sewall	Sunset Reflections
David Davidson	Badlands Fence Line at Sunset
Stuart Glickman	Brookside
Dawn Sikkema	Whose Woods These Are, I Think I Know
Roy Sewall	Power and Motion #4
Willem Bier	Chinatown
Al Tanenholtz	Window Washer

#### **Unrestricted Print of the Year**

Al Tanenholtz	Mushrooms
---------------	-----------

### Traditional Electronic Images

Alex Guo	Lotus
Gail Bingham	Isle of Mull, Beached Boats
Eric Schweitzer	Door in Spanish White Village
Jay Gartenhaus	Orange Sunshine
Beth Wensley	Soft Flower
Carol Lee	Beam Me Up
John Willis	Callirhoe Involucrata
Alex Guo	Departing
Alex Guo	Yangee Dance

#### **Traditional Electronic Image of the Year**

Arthur Hyder	Charging Bear
--------------	---------------

### Unrestricted Electronic Images

Lori Ducharme	Udvar Hazy Overlook
Al Tanenholtz	Corroded Triumph
Gordie Corbin	I Wish I Could
Evelyn Jacob	Christmas Fuchsia
James Hammack	Magnolia Graveyard
Stuart Glickman	What Makes It Fly
Les Trachtman	Vase Reflections
Gordie Corbin	Reflections in Bottles
Martha Cain-Grady	False Creek, Vancouver, Canada

#### **Unrestricted Electronic Image of the Year**

Evelyn Jacob	Chihuly at the Bellagio
--------------	-------------------------

### **Clarence Carvell on the Winning Images**

**“Foggy Morning” by Bill Olson:** The ink-jet printer has given us many more colors than was ever available in a C-41 print or even the early image-setters. Still, to take advantage of that, the photographer needs an image file that contains all the subtleties the ink-jet printer has to offer. Bill Olson's "Foggy Morning" does just that. Imagine yourself standing on the boardwalk at 7 am, shrouded in fog, the boardwalk dripping wet, and only a single figure coming out of the fog with the likelihood that nothing is going to change since things are 'closed for the season.' Except for the blue recycling container and ignoring the clock, the image is timeless.

**“Mushrooms” by Al Tanenholtz:** When I think about the options a photographer has when he has all the tools at his disposal, I feel the final result should reveal something not only about the subject, maybe in a different way, but also something about the artist himself. By looking at the print, we have no idea what the original file might have contained. Al has taken the information available to him and by using filters, plug-ins and whatever else, including a very pastel palette, has created an Alice in Wonderland feel to his picture. I especially like how he used the negative spaces to add emphasis to the mushroom shapes themselves.

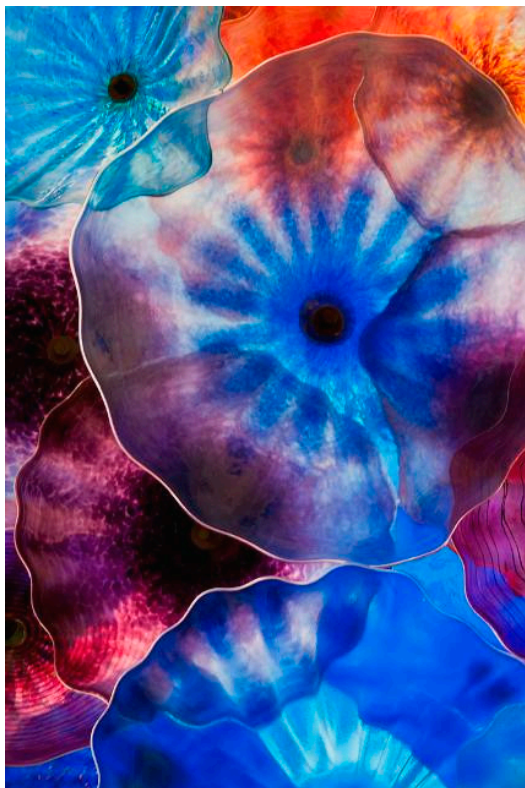
**“Charging Bear” by Arthur Hyder:** Judging the digital entries for the End-of-Year competition, both the Traditional and Unrestricted, was very difficult indeed. I was immediately impressed by the quality of work and by the originality of many of the images. For the Traditional work, I was mostly looking for originality and a different way of seeing things. Composition and impact was fundamental and a clear choice of subject was essential. I could easily have awarded a first place to any of my ten choices, but the "Charging Bear" ranked high on impact and even though we know nothing about the circumstances, I felt the photographer did a good job a creating a sense of fear and futility in the way it was presented to us.

**“Chihuly at the Bellagio” by Evelyn Jacob** For the Unrestricted entries, I was impressed by the variety of techniques and the various directions that photographers are taking, using this category to express their personal artistic interests and exploit their talents, taking risks in many cases but definitely using the tools that digital imaging has made available to them.

HDR has opened up a whole new world and is easily overdone. I chose two that I felt pushed the envelope without going overboard but were also good images within themselves. The "Cygnet" could have passed for a Traditional piece but it showed up here and it was too good to be ignored. My ten choices I felt were good images without any further work, but by using the image manipulation tools the photographers have taken them to another level. I chose "Chihuly at the Bellagio" for first place after a great deal of deliberation because I felt the photographer has presented the image to us without pretense, meaning the glass could easily look like this. Whether it did or not doesn't matter.



Bill Olson – "Foggy Morning"



Evelyn Jacob – "Chihuly at the Bellagio"



Al Tanenholtz – "Mushrooms"



Arthur Hyder – "Charging Bear"

## Star Points

**Star** certificates are awarded to members who compete in the **advanced** categories in recognition of their photographic excellence and competitive spirit as demonstrated by cumulative total points in monthly competitions. During the past competition year, the following NBCC members have earned star awards.

Stars		
1 Star	Dawn Sikkema	106 points
	Bill Olson	142 points
2 Stars	Bill Seelig	217 points
	Willem Bier	228 points
3 Stars	Carol Lee	327 points
	Nancy Wolejsza*	373 points
4 Stars	Alex Guo	403 points
	Evelyn Jacob	429 points
7 Stars	Beverly Gordon	716 points

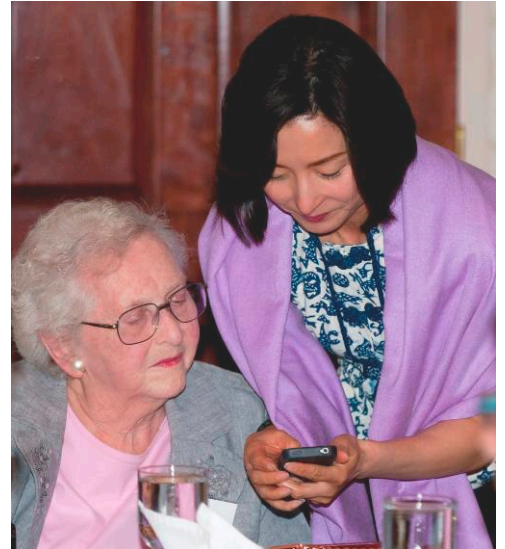
\* Former member. Rejoined in 2012-2013. Points accumulated during previous years.

## Highlights of the Awards Event

Again this year, Alex Guo was the official photographer of the Awards Event. Many thanks, Alex!  
If interested in downloading any of the more than 130 photos that Alex shot at the event, you can do it until June 30 going to <https://www.dropbox.com/gallery/3427598/1/NBCC2012AnnualAwards?h=978efd>.



Gordie Corbin, Judy Switt and Bob Peavy welcome Nancy Wolejsza back to the Club.



Jean Yuan shows a very useful app to Gordie Corbin



Nikhil Bahl engaged in a lively chat with the Mathisons



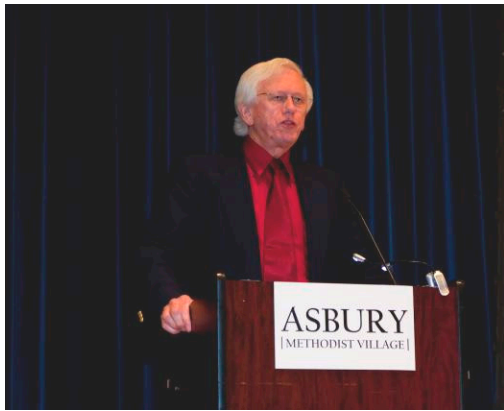
Tom Field, Willem Bier, Alan Sisen, and Nikhil Bahl



Bob Dargel passes the gavel to upcoming NBCC President Carol Lee



It takes two to tango:  
Judy Switt and Bill  
Seelig



Everyone had a great time, as this photo shows.



NBCC President Bob Dargel, who performed the duties of MC.



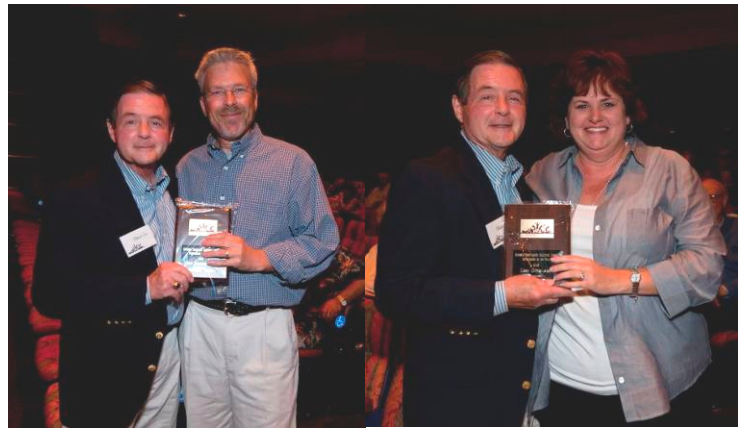
Who took this picture of Alex Guo receiving his four stars award?



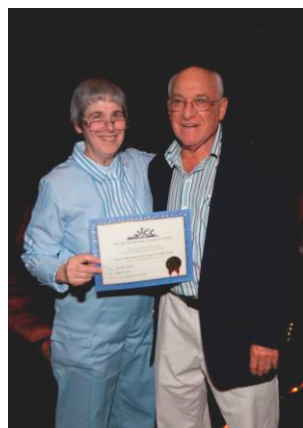
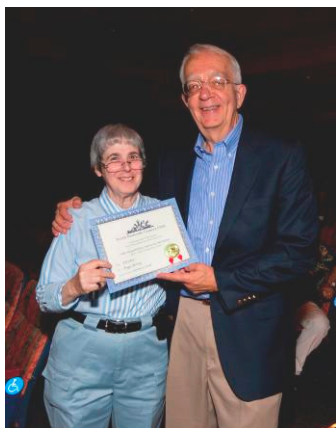
Cynthia Hunter, who finished first in the Novice Unrestricted Electronic Category, receives her award from Chuck Lee



Competition Chair Judy Switt announces the top ten images in each category.



Photographers of the Year in the electronic categories: Jay Gartenhaus in Traditional and Lori Ducharme in Unrestricted.



Three of the winners of the Year-End-Competitions: Bill Olson in Traditional Prints, Al Tanenholtz in Unrestricted Prints, and Evelyn Jacob in Unrestricted Electronic.



**COMPETITION ASSIGNMENTS**  
**SEPTEMBER 2012 TO MAY 2013**

- September, 2012: STAIRS:** Create an interesting composition where stairs, either inside or outside a structure, are a dominant feature. People and objects are allowed in the picture. (Must have been taken on or after June 1, 2011.)
- October, 2012 OPEN:** Any photograph taken on or after June 1, 2011.
- November, 2012 WATERSCAPE:** A broad view of an area, similar to a landscape, which has as its major component a body of water. The body of water could be either natural (a sea, a river, a lake, a natural pond, or wetlands) or artificial (a man-made lake or a large pond). (Must have been taken on or after June 1, 2011.)
- December, 2012 BLACK & WHITE:** An image rendered in Black & White. The purpose of this assignment is to find interesting subjects in which color does not create the impact. They may be made directly from B&W negatives or converted from digital files. B&W infrared is also acceptable. Sepia and other toned images are not acceptable. (Must have been taken on or after June 1, 2011.)
- January, 2013 AN ABSTRACT IN NATURE:** An image taken of a subject in nature that the photographer makes into an abstract so that it is not obvious what the image represents. Images based on subjects in a garden, the zoo, an aquarium, etc. are acceptable. The entry title must include or identify the subject. (Must have been taken on or after June 1, 2011.)
- February, 2013 RHYTHM:** Rhythm is a harmonious pattern characterized by the regular recurrence of elements. Often, they provide an overall structure and a feeling of movement. The rhythmic composition comes from the balance of recurring shapes or lines. (Must have been taken on or after June 1, 2011.)
- March, 2013 AN EVENT:** Taking a photojournalistic approach, the image should tell a story about an event where people have gathered. This could be a news event, such as a parade or a demonstration, a sports event or even a family event. People must be included in the image; thus, photographs of a house on fire or an erupting volcano without people would be excluded images. (Must have been taken on or after June 1, 2011.)
- April, 2013 THROUGH THE WINDOW:** An image with a view looking through a window, either from inside or outside. The window must be evident in the picture. (Must have been taken on or after June 1, 2011.)
- May, 2013 OPEN:** Any photograph taken on or after June 1, 2011.



## COMPETITION ASSIGNMENTS

### SEPTEMBER 2013 TO MAY 2014

- September, 2013:** **DIAGONAL/SLANTED LINE:** Create an image in which the composition relies upon one or more diagonal or slanted lines, explicit or implicit. (Must be taken on or after June 1, 2012)
- October, 2013** **OPEN:** Any photograph taken on or after June 1, 2012.
- November, 2013** **CITY LIFE:** Depict some aspect of life in a city including at least one person or animal. (Must be taken on or after June 1, 2012)
- December, 2013** **IN A GARDEN:** Photograph anything in a garden: scenic or close-up, alive or not. (Must be taken on or after June 1, 2012)
- January, 2014** **TWO-MONTH OPEN:** Any photograph taken on or after November 7, 2013.
- February, 2014** **NIGHT PHOTOGRAPHY:** Create an image outdoors with no lighting from the sun (except moonlight and/or deep twilight sky, both optional). Natural light (moon, stars, twilight, volcano, lightning) and artificial light (fire, lantern, electric lighting, photo flash, etc.) are acceptable, but any light from a sunrise or sunset is not. (Must be taken on or after June 1, 2012)
- March, 2014** **ENTRANCES OR EXITS:** Feature one or more openings through which a person or animal enters or exits. (Must be taken on or after June 1, 2012)
- April, 2014** **MOTION (NOT STOP-ACTION):** Convey the sense of motion. Do not use high-speed photography to freeze the action. A sense of motion can be created by moving the subject or the camera equipment during exposure. For the Unrestricted Categories only, motion effects can be created by darkroom or computer processing. (Must be taken on or after June 1, 2012)
- May, 2014** **OPEN:** Any photograph taken on or after June 1, 2012.

## 2011 – 2012 NBCC Board of Directors, Standing, and Special Committees

<b><u>President</u></b> <b>Bob Dargel</b>	<b><u>Vice President</u></b> <b>Carol Lee</b>	<b><u>Secretary</u></b> <b>Lori Ducharme</b>	<b><u>Treasurer</u></b> <b>Paul Taylor</b>	<b><u>Directors</u></b> <b>Gordie Corbin    Kent Mason</b> <b>Bob Peavy</b>
<i>Voting Members in Bold</i>				
<b><u>Programs</u></b> <b>Jean Hanson</b> Raymond Ao Stu Glickman Sharyn Greberman Kent Mason Jessyca Stansbury-McCargo	<b><u>Membership</u></b> <b>Chuck Lee</b>  <b><u>Exhibits</u></b> <b>Bill Olson</b> Evelyn Jacob Dawn Sikkema	<b><u>Competition</u></b> <b>Judy Switt</b>  <b><u>Prints</u></b> Bill Ho Bill Richards  <b><u>Electronic</u></b> Willem Bier Tom Field	<b><u>Judges</u></b> <b>Steve Gelband</b> Ken Goldman Jack Rosenberg Jack Tierney  <b><u>Webmaster</u></b> <b>Tom Field</b>	<b><u>Hospitality</u></b> <b>Marcia Loeb</b> Stephanie Archie Alla Doroshko Jim Render Virginia Render Ellen Sirkis Terry van Houten
<b><u>Church Liaison</u></b> <b>Allan Meiser</b>	<b><u>Community Outreach</u></b> <b>Ellen Sirkis</b> Ira Adler Joel Hoffman    Howard Morris Marvin Sirkis    Meryl Sliver Al Tanenholtz    Les Trachtman		<b><u>Education</u></b> <b>Chris Hanessian</b> Nikhil Bahl    Bruce Cyr    David Davidson Tom Field    Joel Hoffman    Judy Manesh Kent Mason    Roy Sewal    Alan Sislen	
<b><u>Awards Event</u></b> John Villforth	<b><u>PSA Representative</u></b> Judy Burr	<b><u>Photo Essay</u></b> Stu Mathison David Davidson Tom Field	<b><u>Competition Image Review</u></b> Gordie Corbin    Tom Field Carol Lee    Bob Peavy Alan Sislen    Judy Switt Anita van Rooy	
<b><u>Data Base Administrator</u></b> Roy Sewall	<b><u>Photo Gallery</u></b> Bill Seelig Claudia Seelig			



North Bethesda Camera Club  
15641 Gold Ring Way  
Derwood, MD 20855

First Class Mail

