

The Lens and Eye



Volume 48 Number 8 | April 2013 | Editor: Lori Ducharme | Contact: newsletter@nbccmd.org | www.nbccmd.org

In This Issue

Calendar

APRIL EVENTS

- 3 Competition Night, 7:30pm. *Topic:* "Through the Window"; *Judge:* Matt Schmidt. *Hospitality:* Becky Tidman, John Willis
- 10 Program Night, 7:30pm. *Speaker:* Jean-Louis Atlan, Photojournalism. *Hospitality:* Stu Mathison, Eric Schweitzer
- 17 Board Meeting, 7:30pm
- 24 Competition Night (March 6 make-up date, "An Event"), 7:30pm. *Judge:* TBD. *Hospitality:* Marilyn Jacox

MAY PREVIEW

- 1 Competition Night (Open - Electronic)
- 8 Competition Night (Open - Prints)
- 15 Board Meeting, 7:30pm
- 22 Program Night, 7:30pm
- 29 Program Night, 7:30pm

Happy vernal equinox! Although winter continues to hang around like an annoying house guest, it's technically spring and the cherry blossoms (and baseball!) will be here soon. Get out there and enjoy!

Speaking of winter, Mother Nature disrupted the NBCC calendar last month by postponing our March 6 competition night due to the "Snowquaster." One consequence is that we have a shorter newsletter this month, as there are no winning images to show and no competition results to list. We'll make up the competition date on April 24, and we'll come back with an extra-long edition of *The Lens & Eye* next month.

In this issue, you'll hear about the April competition nights and program night, a review of the Club's "birthday party" in March, the results of the 2013 Glennie nature competition, a unique exhibit opportunity for Club members, a review of a photo workshop at Bosque del Apache, and more from our brilliant lineup of committee chairs and contributors.

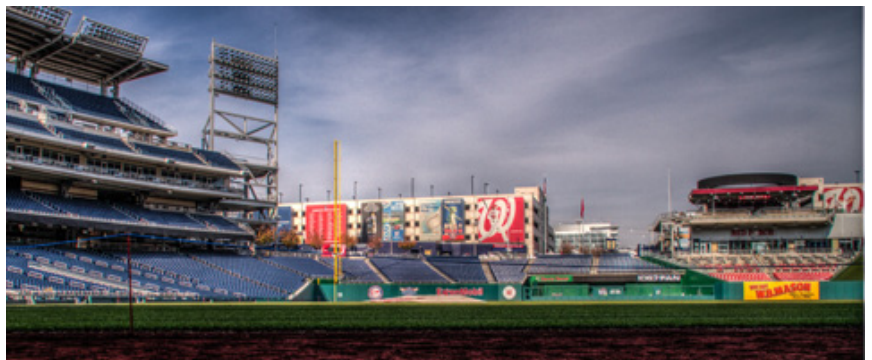
Have an idea for an article? Send it along! You can reach us at newsletter@nbccmd.org.

– Lori Ducharme, Editor

April Competition Topic: Through the Window

An image with a view looking through a window, either from inside or outside. The window must be evident in the picture. See member handbook for full description.

Electronic image submissions are due by 7:30pm on Sunday, March 31.



Play Ball! Nationals Park, from the dugout © Lori Ducharme

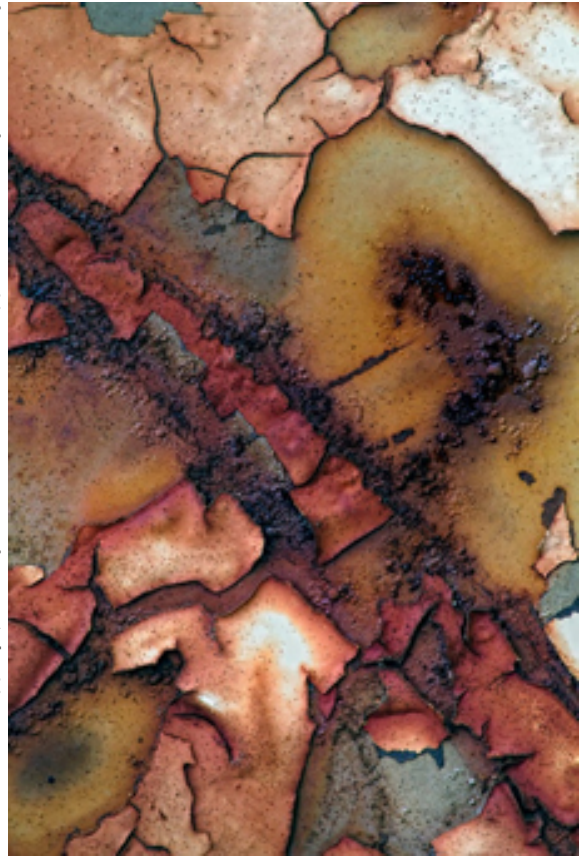
April 3 Competition Judge: Matthew Schmidt

Matt Schmidt is a computer professional and an amateur photographer with a wide variety of photographic interests. During the winter months he often shoots indoors, mostly macro and still life, while in warmer months he shoots outdoors, enjoying landscapes, action and motorsports. Over the last several years he has been developing his skills with more artistic photographic interpretations, incorporating panning, multiple exposures and montages into his portfolio.

Although he works in a technical field, Matt has taken a great interest in art, studying the masters in painting and photography. He has begun to apply those interpretations, compositions and lighting techniques to his photography.

Matt is a member of NVPS, is a current board member and has held a board position for six of the last seven years. He is currently one of the NVPS webmasters and has been the Digital Competition Coordinator, PSA Rep, Co-VP for Competition, and the Workshops, Education and Training Coordinator. Matt is a PSA member and has attended the PSA Image Analysis course and the JMCPA Judging Seminar numerous times (hoping to get it right at some point). Matt designed and maintains the current NVACC website.

To see more of Matt's images visit: <http://loreleistudios.com>.



Rusty Jobox Tracks © Matthew Schmidt

April 10 Program Night: Photojournalism

Our April 10 meeting will feature a program on "The Role of Photography in Reporting the News" by Jean-Louis Atlan. In 40 years of photojournalism, he has covered politics, show business, war, disaster and recovery. His photographs document potent moments in some of the most important events of the last half century.

Atlan's career began in 1969 at Gamma photo agency. In 1976 he moved to Sygma agency where for the next 24 years he covered international breaking news. He later joined the staff of the French magazine *Paris-Match* as their US correspondent.

Atlan's work has been featured on the cover of *Time*, *Newsweek*, *LIFE*, the *New York Times Magazine*, as well as most of the major European print publications.

For 5 years, Atlan was co-owner in the Zone 2.8 Gallery & Studio in Washington, DC. With business partner Pascaline Steiner, the gallery exhibited works from acclaimed international photographers, and were yearly participants in Fotoweeek DC. He has been working on independent projects since 2009.

View his portfolio at www.JLATLAN.com.

Results of the 2013 Glennie Memorial Nature Salon (“Glennies”)

NBCC submitted a strong entry for the 33rd George W. Glennie Memorial Nature Salon (commonly known as “the Glennies”), hosted each year by the Merrimack Valley Camera Club.



Mushroom Layer on a Tree, © Claudia Seelig

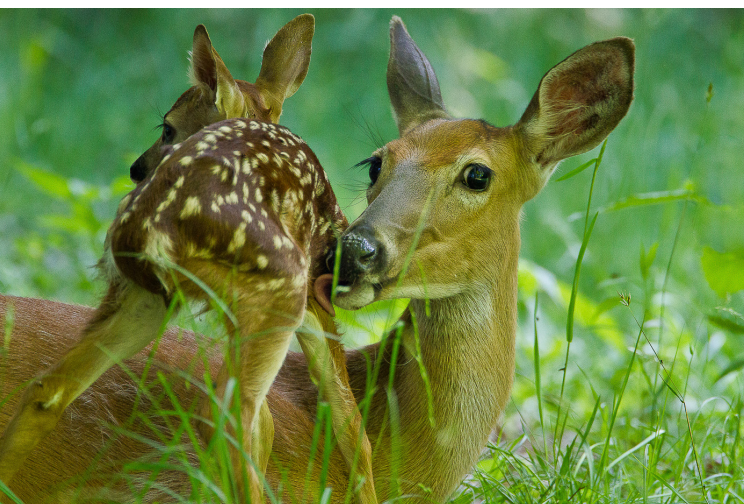
This year, the Glennies attracted entries from 91 different clubs from around the world, each entering a set of 10 nature images. **NBCC tied for 5th place overall in a very competitive event – only 7 points separated the top 6 clubs.** Congratulations to all involved!!

NBCC’s entry was assembled after an open call for nature images from the club’s membership. In all, 39 members submitted 139 images for consideration, from which our judges could select only 10. The three judge panel challenged with making the selections included Alan Sisen, Chris Hanessian and Roy Sewall. Tom Field provided the technical support. The images were all sized to the Glennies specification and the photographer’s name was removed from the image title before being judged by the panel. The high level of participation resulted in a very strong NBCC entry.



Hungry Cub, © Art Hyder

Glennie judges awarded points to each image entered, and the sum of points for each of a club’s 10 entries was its final score. In addition to NBCC’s 5th place finish as a club, 7 of NBCC’s 10 images were singled out for individual recognition because of their high scores relative to all others in their category. Claudia Seelig’s *Mushroom Layer on a Tree* received the “Best Botany” award; Art Hyder’s *Hungry Cub* took 1st place in the “Other Large Mammal” category; and Kent Mason’s *Just Born and Licked Clean* received a Merit Award in the “Large Herbivores” category. Four other images placed in the top 1/3 of all submissions: Anita Van Rooy’s *Leopard*, Art Hyder’s *Charging Bison*, Jay Gartenhaus’s *Dolly Sods*, and Rhoda Steiner’s *Dexter’s Anemone*. All of the recognized images will be included in the Glennie Memorial Nature Salon’s slideshow, which will be posted on the Glennies website in the near future.



Just Born and Licked Clean, © Kent Mason

Visit the Glennie website to learn more:
<http://mvcameraclub.org/Glennie/glennie-2013-results.htm>.

Happy Birthday, NBCC!!

On March 13, we held our annual "birthday party" for NBCC. In honor of the event, Bill Seelig gave a presentation on black and white photography the old fashioned way: with film! Equipment was demonstrated, techniques discussed, and many images shown.

In the birthday spirit, a special surprise door-prize was awarded: a box full of cash! The prize winner was Carol Balassa, who is on the waiting list to get into the club membership. This just goes to show it pays to show up for meetings, even if you are not a member!! Carol has been saving up for a new camera and promised to use the cash for useful photographic purposes.

Meanwhile, some very considerate members brought outstanding food in honor of the NBCC birthday. Bill wisely responded by speeding up some features of his talk so folks would have more time to party. ❖



Carol Balassa accepts the cash door prize.

Photos © Claudia Seelig

Mark Your Calendars!

A couple upcoming events to keep in mind:

The "Event" competition night, postponed due to "snow" on March 6, has been rescheduled for **April 24**. Watch for GordieGrams introducing the judge and explaining logistics for the make-up date.

Our annual year-end awards event is scheduled for **Wednesday, June 5** at Asbury Methodist Village in Gaithersburg. Please plan to attend. More information and a reservation form will be in the May issue of *The Lens & Eye*.

Member Profile: Joan Linderman



Photo © Alexander Lorozov

I was pleased to meet recently with Joan Linderman, an NBCC Member since 2007, in her home in Chevy Chase. My eye went immediately to several framed abstract images gracing the walls of both the sunroom and the living room. I soon learned that these were Joan's work, representing her special interest in architectural photography.

Joan joined the Club at the suggestion of her friend, Eileen McClatchy. She spent nearly a year and a half on the waiting list. Since becoming a member, she has participated in Kent Mason's classes and Roy Sewall's image critiques. She has also attended several field trips. She especially enjoyed the field trip two years ago to churches on New Hampshire Avenue, and was sorry to have missed the more recent one to the two churches on Massachusetts Ave. Despite a busy schedule of community service projects, Joan often attends competition and program nights at the Club. She has won a few awards with images entered in the Novice Traditional Electronic category. Another of her images, *National Gallery*

Tunnel, was shown in the recent Club exhibit at the Friendship Heights Village Center.

A native of the "Jersey Shore" (Asbury Park, NJ) Joan earned a BA in Sociology at Douglas College, the former women's counterpart to then all-male Rutgers University. She then moved on to Syracuse University where she earned a MA at the Maxwell School for Public Affairs. Here she met Shelley Linderman, a graduate student in Public Administration. In 1972, upon completion of their graduate studies, Joan and Shelley were married and moved to Washington DC where they had both secured employment. Joan worked for a consulting firm for a year, and then found a position in the Arlington County government where she ultimately became Director of Fair Housing and Community Development, a position she held until her retirement in 2003. Shelley worked for several federal agencies and then became an administrator with the Defense Intelligence Agency, involved with budgeting and training programs. Their son, Michael, was born in 1981. He is now married, living in NYC, and head of computing for the Genomic Institute of the Mt. Sinai Medical Center and an assistant professor in the Medical School there. A daughter, Lauren, was born in 1985 and is currently earning a PhD in Structural Engineering at the University of Illinois.

Joan's interest in photography has been a part of her life since graduate school where she and Shelley bought a Nikon SLR and took a photography course in black and white film developing. She used the camera for many years, documenting family events and vacations with both slides and prints. She often makes posters or books of the

prints to supplement family life events. She admits to having a vast collection of images that need editing and preservation and hopes to be able to do this some day soon.

Recently returned from an 18 day tour of Southeast Asia, including Laos, Viet Nam, Cambodia and Thailand, Joan is beginning to process the over 1000 images she took. She sorts and processes in Lightroom and takes her best images to Dodge Labs for printing and enlargement. Although she enjoyed Alan Sislen's class on matting and framing, she still has a local frame shop do this work. She also plans to select her favorite images and add them to her web galleries at <http://Linderman.smugmug.com>.

Her husband, Shelley, succumbed to cancer in 2004. They were great travel companions and visited Australia, New Zealand, Turkey, and much of Europe together. On her own, Joan visited a Foreign Service friend in Korea. She also made a trip to Japan when her daughter Lauren was a student there. She has documented most of her travels with a Canon G12. For her most recent trip, she purchased a Canon SX50 Power Shot with a zoom lens, and was happy with its functionality and with the pictures she made, all hand held. She does not pack a tripod when she travels. At home, she uses a Nikon D90 with an 18-270mm lens.

Joan's goals for her photography future include landscapes, portraiture and improving her abstracts. She has enjoyed participating in Club activities and hopes to be able to attend more meetings in the future.

— Jean Hanson

Opportunity to Exhibit a Body of Work

The NBCC Exhibits Committee has arranged for an exhibition at the Levine School of Music which offers a large amount of exhibit space on two floors of the school. The duration for this exhibit will be much longer than a typical NBCC exhibit, running from early September through mid December, 2013. The exhibit space has fairly good traffic and the school will provide the publicity, food, beverages and a concert at the artist's reception.

Due to the size of the exhibit space we are planning a much different format for this NBCC exhibit. Instead of 25+ members displaying one or two images, the exhibit will be limited to 6 to 8 members each exhibiting a body of work of 6 to 10 images, giving the Club's members an opportunity to exhibit a broader selection of their work.

This exhibit opportunity is open to all NBCC members who are interested in exhibiting a body of work of about 6-10 images. The actual number of images exhibited by each participant will depend on the size of their framed work and the total number of exhibitors. This is a great opportunity for the many talented NBCC photographers who have limited or no experience exhibiting their work. This exhibit offers members an opportunity to exhibit a larger body of work without having to find an exhibit venue, publicize the exhibit or organize a reception.

Here are the ground rules for participation. The body of work exhibited must:

- Have a specific theme e.g. flowers, landscapes, abstract, shadows, etc.;
- Be either all black and white or all color, but not mixed;
- Be displayed in professional-quality wood or metal frames in black, dark or neutral colors that are 18" x 18" or larger. Matting should be white or off-white;
- Be a body of work that has not been previously exhibited in the DC metro area. *(The restriction doesn't apply if the previous exhibit had been at a site with limited public access);*
- Be for sale - the Levine School will handle all sales and retain a 20% commission.

Participation in this exhibit will be determined through a jurying process. Members wanting to participate must submit their body of work (all the images, JPEGs 1MB or smaller) with a list of each image title, frame size (W x H), proposed price and, if applicable, the location where the body of work had previously been exhibited, to the NBCC exhibit mailbox: exhibits@nbccmd.org.

Although final dates have not yet been finalized, here is the preliminary schedule:

- April 30, 2013: To facilitate planning, members interested in participating in this exhibit should notify Alan Simmons at ahsimmons@comcast.net.
- June 3, 2013: Deadline for submitting the proposed body of work.
- June 2013: Judging. Details of the judging process are yet to be finalized, but it will be by an outside judge or a panel of 3 NBCC members not participating in the exhibit.
- July 1, 2013: Email notice of selections to members who applied. Members whose body of work was selected must confirm participation in this exhibit and the related exhibit requirements.
- September 2013: Hang images. Exhibitors will be responsible for hanging images. The Levine School and NBCC Exhibit Committee members will be available to provide limited assistance.
- October 2013: Artist's Reception: Date TBD by the Levine School of Music.
- December 2013: End of exhibit. Exhibitors take down and remove their images from the school.

Recognizing that some members have never exhibited a body of their work, one of our experienced members has volunteered to offer advice on how best to exhibit images, establish prices, etc.

If you have any questions, please contact Alan Simmons ahsimmons@comcast.net or Bill Olson at bolson10720@gmail.com.

– Bill Olson, Exhibits Committee Chair

Splinters from the Board

The "An Event" competition night, which was cancelled in March due to inclement weather, has been rescheduled for April 24th. It will not be held in conjunction with the May Open competition as reported earlier.

Stu Mathison reported on the results of the Photo Essay survey. There were 46 responses with most people reporting they had attended two or more essay programs. Ninety-One percent rated the quality of the program as very good or excellent. The duration of the program was seen as about right and most liked the comfort of the Asbury auditorium. Most felt there was a good mix of essays. There were some concerns with the projection system – some essays appeared too dark while others appeared flat and lacking color. The Photo Essay committee will meet to review the Survey results in order to see what changes should be made for next year.

Kent Mason reported on the NBCC outreach to Rockville High School. So far, Kent has made three deliveries of cameras to the Rockville Photography Department. He reports that the teacher and her five classes of students are thrilled and are grateful to NBCC members who donated cameras. The teacher has even found she can expand the number of assignments she gives since the students have equipment readily available. The Board voted to donate fifty dollars for batteries for the cameras. Photography rocks at Rockville!

The Board voted to purchase a new digital projector to replace the first- generation digital projector which we have used for the past seven years. The new projector would provide a significant improvement in resolution for our electronic competitions as well as the photo essay. It is probable that the projector purchase will not occur until the summer. The equipment reserve fund will be used to finance this purchase.

– Carol Lee, NBCC President

Member News

Please extend a warm welcome to our newest member **Sarah Salomon** whose patience on the waiting list was finally rewarded at the beginning of March when Ellen Sirkis notified the membership chair that with her busy schedule she was not being able to fully participate in the responsibilities nor the benefits of a NBCC member. Ellen concluded that she was "taking a slot which some photographer is waiting patiently for" and that "it seems only right that I relinquish my membership in favor of the next person on the waiting list." Ellen expressed her appreciation for the welcoming she had received from the Club and said that she would be an enthusiastic guest at NBCC meetings, programs, and events.

Late that same night an invitation was sent to Sarah, who had first applied in October 2010. Early the next morning she responded with a positive acceptance, sending in her completed application and check immediately. Sarah is a professional photographer and writer, with her book *Politics and Roast Beef* being about recipes of our Nation's First Ladies. During the first week of March, Sarah and her sister were entrants in the Philadelphia Flower Show – America's largest – where their exhibit was awarded second place. She is also a photography judge for the Garden Club of America.

As it turned out, for the second week of March, Sarah had been scheduled some time ago to attend a photography workshop in Charleston, South Carolina, conducted by Alan Sislen and Colleen Henderson. In addition to Alan, there were six other NBCC members in that workshop including the president and membership chair. So, in that first week of her membership, Sarah was duly welcomed and oriented in what could be termed "NBCC immersion."

– Chuck Lee, NBCC Membership Chair

April Field Trip: Sylvan Heights Bird Park

A reminder that the April field trip is to Sylvan Heights Bird Park in Scotland Neck, NC, the weekend of April 12-14. This is a breeding facility for ducks, geese, swans and other exotic waterfowl from around the world. Details are in the March issue of the *Lens & Eye*.

General admission to the park is \$9 for adults and \$7 for seniors. There are other options for membership and photo passes, which allow early entry and late stays and include keys for the fenced areas. Please check the park's website at www.shwpark.com for more information.

Scotland Neck is a small town southeast of Roanoke Rapids, NC, just over the VA/NC border, about a 4 hour drive. The Best Western Scotland Neck Inn is close to the park. Reservations can be made by calling 252-826-5141. For all arriving on Friday, the group plans to meet at the park entrance at 9 AM on Saturday, April 13 and again for lunch that day. Please let Deeva Garel know if you are planning to attend (email: diwg2000@yahoo.com).

– Cheryl Naulty, Field Trip Committee Chair

PSA News



www.psa-photo.org

You may wonder what the various honors in PSA mean and why PSA members may have letters after their names. There are 2 categories of recognition in PSA—Recognition of Photography and Recognition of Service. Some members may have some of each and others may have honors in only one area. These recognitions do not come automatically and members must keep careful records for the photography honors (also known as ROPA). The first one, PPSA is for proficiency in PSA Exhibitions and requires 288 or more acceptances supported by Star Rating certificates from one or more Divisions. For Excellence (EPSA), a member must have 700 or more

acceptances supported by Star Rating certificates from one or more Divisions. Master (MPSA) requires 1500 or more acceptances supported by Star Rating certificates and Grand Master (GMPSA) requires 3000 or more acceptances supported by Star Rating certificates. To earn any of these honors, a member must keep records according to the Division rules and apply for Star awards first. Excel spreadsheets are used to keep track of titles and acceptances in various Exhibitions. These are then submitted to the Star Ratings Director of the Division for review. All these must be kept for future applications for additional stars or ROPA. All this takes a lot of time, so some photographers may never apply for recognition after spending hours just entering Exhibitions.

The other category of PSA Awards is that for service. APSA (Associate) is awarded for material contributions to the advancement of photography; that includes photographic proficiency as well as service. FPSA (Fellow) is awarded for outstanding contributions to the advancement of photography involving a high degree of proficiency and achievement, combined with service and dissemination of acquired knowledge through lecturing, judging, instructing and publishing. Personal achievement does not qualify for this honor. HonPSA (Honorary Membership) is awarded for outstanding service to photography and may be given to non-members. HonFPSA (Honorary Fellow) is the highest designation awarded by PSA and is given only to members. It is awarded only for unique or outstanding contributions of major importance to photography.

[continued]

Several well-known photographers have been awarded at least one of these honors. They include: Ansel Adams, Alfred Stieglitz, Edward Weston, Edward Steichen, Yousef Karsh, Edwin Land, Aubrey Bodine, Barry Goldwater, Otto Litzel, Wellington Lee and Edward Bafford. Bafford was a well-known photographer in Baltimore and member of the Baltimore Camera Club. He left his collection of photographs to UMBC; it is worth a visit to see his wonderful photographs which include a number of Bromoil prints. Other recipients include some local photographers including Olie Fife, who was a member of NBCC and was well-known for his photojournalism. PSA gives an award for the Published Picture of the Year in his honor. Other PSA-honored local photographers who have judged for NBCC include Paul Luebke, Marion Towns and Sandra Thaw. PSA honors the late Charles Keaton, who was a local PSA member, with an award to a Journal contributor who has supported the magazine for a long period of time with feature articles. Another local photographer is honored with the Elmore R. Chatham Memorial Award, which is given to the author of the article considered the best feature story in the PSA Journal from the prior calendar year. Chatham was the Mid-Atlantic Director from 1987-1994. There are other awards given by the Divisions and for service in various areas of PSA.



PSA now has a presence on Facebook at <http://www.Facebook.com/Photographic.Society.of.America>. This is a public page and you don't have to be a Facebook member to look at it. This is the official PSA Facebook page; others are not.

The March issue of the **PSA Journal** includes reviews of Eye Candy by Alien Skin Software as well as several books including **Photographing Waterdrops: Exploring Macro Worlds with Harold Davis**, Brenda Tharp's book **Extraordinary Everyday Photography: Awaken Your Vision to Create Stunning Images Wherever You Are**. I highly recommend her book as it provides good exercises in seeing and is well illustrated.

The articles in the Journal have quite a variety of topics so there is something for everyone. They include: Wildflower Identification, Photographing Insects With a Micro Lens, The Benefits of HDR, Winter Birds of Bosque del Apache, and The Wooden Architecture Route in Southern Poland. The Distinctive Image feature by Joseph Hearst, APSA, FPSA should be of interest to anyone who loves to photograph junk/old things/abstracts. The author states that he tries to cultivate what Freeman Patterson calls "the art of seeing." The comments are quite similar to Brenda Tharp's in the book mentioned above.

The new PID (Projected Image Division) is forming some new study groups, including an iPhone Study Group administered by our own Willem Bier. You can see the work at <http://psadigital.org/group51/>. There are also groups for Creative photography and other groups which are visible only to group members. The Photo Travel Division also has openings for study groups. These groups are quite worthwhile as you learn to make comments and receive them from other members. Often these comments help turn a previously "rejected" photo into an accepted one in PSA International Exhibitions. You can see some examples of study groups at http://www.cpid-study-groups.com/group_1_display_visitor.html. General information about study groups can be found at http://www.psa-photo.org/divisions/pid/study_groups/about-the-groups/. I encourage all to look at these sites and if you are an Individual PSA member, consider joining a study group in your area of interest. If you have any questions, please feel free contact me for more information.

– Judy Burr, NBCC PSA Representative

Photo Workshop Review: Bosque del Apache

– Text and images by Lori Ducharme

As someone who admires but doesn't do a lot of wildlife photography, I had long wanted to photograph the winter migration at Bosque del Apache National Wildlife Refuge, but wasn't prepared to tackle it on my own. I didn't know the best spots to go, what gear to take, or how to shoot birds in flight. Last November I had the opportunity to join a photography workshop led by Rick Sammon (www.ricksammon.com) and Juan Pons (<http://juanpons.org/>). The price was right, and the timing was perfect, so I bought some new cold-weather gear and booked my flight.

Bosque del Apache is in the middle of nowhere, encompassing a series of small lakes and rivers in central New Mexico, about 90 minutes south of Albuquerque. It is a favorite stopover on the fall migration route for thousands of sandhill cranes and snow geese. The fantastic light, big western skies, and mountain backdrops make it a perfect venue for photographing these birds at rest and in flight. We stayed in Socorro, NM, which is probably the definition of a "one horse town." In November/December, Socorro is overrun with photographers using its budget motels as a staging area for pre-dawn carpools to Bosque.

Juan Pons is an outstanding wildlife photographer and a terrific instructor. Rick Sammon is a Canon Explorer of Light who I knew from his travel and HDR photography. Together, they're a dynamic duo who put their students first and work hard to make sure everyone gets their time and money's worth. Our group of 12 left the motel each morning in a 4-car caravan. Rick and Juan insisted on prompt 5:00am departures, and it paid off as each morning we had perfect position for sunrise over the main pond. While jockeying for position with a hundred other photographers along the crowded lakeshore in the pre-dawn darkness had the potential to be frustrating, Rick and Juan kept a watchful eye on our group and ensured that we all were well-positioned for the morning "liftoff" of snow geese en masse from the pond as the sun reached the horizon.

Our 5 days followed a similar pattern: we'd start at the main pond for liftoff and sunrise. (Saturday morning's dawn was widely hailed as a once-in-a-lifetime sunrise; many of us stopped photographing and just stood in awe as we watched it unfold.) Then we'd head for the crane pool, a large pond near the park's entrance bordered by a long high berm, which made the perfect perch for photographers standing shoulder-to-shoulder to watch sandhill cranes take off in pairs and small groups as they headed for the fields to feed. While many people set up with tripods, we were encouraged to use the unique vantage point to shoot handheld, which let us practice tracking and capturing the birds in flight.



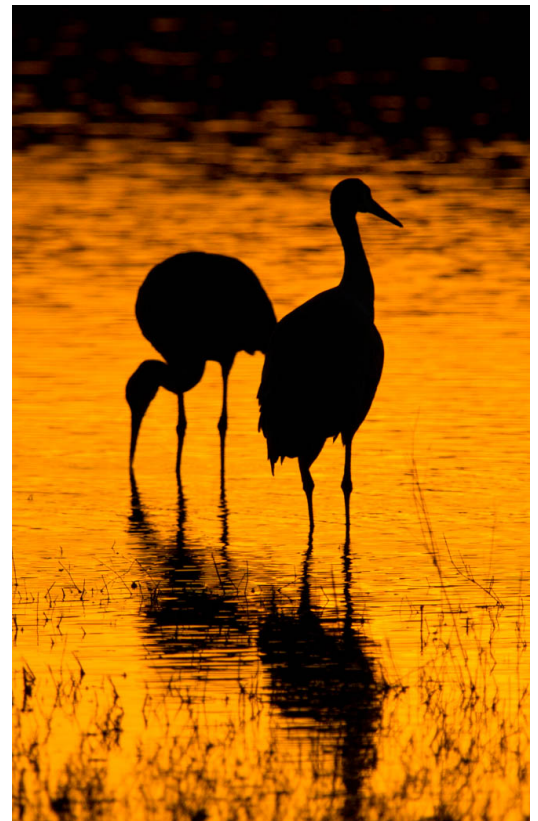


Once the crane pool was empty, our little caravan would head over to the farm fields, where the cranes joined up with the snow geese to feed for much of the day. The fields gave us an opportunity for a lot of in-flight and landing shots (mostly using long lenses on tripods). We'd stay there until the late morning sun became too harsh, and then we'd head back to Socorro for a group breakfast (the huevos rancheros were outstanding), a nap, and some classroom work. We'd then return to Bosque for the early evening light.

Three of our afternoons were spent in a conference room together, downloading and sharing photos, engaging in helpful and fun image critiques, and learning Photoshop and Lightroom tips and tricks from Juan and Rick. On our fourth day, we used the harsh late morning light as an opportunity to practice HDR

photography at a junkyard near the refuge, after which we rewarded ourselves with the best green chili cheeseburgers in the southwest, followed by more classroom work as Rick gave us an HDR lesson using Photomatix and Nik's HDRSoft. We even got to watch Rick and Juan record an episode of their podcast for Digital Photo Experience (<http://dpexperience.com/about/>).

Our 5 days were jam-packed with spectacular scenery, great light, unusually mild weather, cooperative birds, fun co-participants (no grumps!) and hundreds of "keeper" shots. I came home exhausted but ready to head back to Bosque on my own next time. ❖



2012-2013 NBCC Board of Directors, Standing, and Special Committees

<u>President</u> <i>Carol Lee</i>	<u>Vice President</u> <i>David Davidson</i>	<u>Secretary</u> <i>Bruce Cyr</i>	<u>Treasurer</u> <i>Bill Olson</i>	<u>Directors</u> <i>Gordie Corbin</i> <i>Bob Dargel</i>	<i>Kent Mason</i> <i>Bob Peavy</i>
---	---	---	--	--	---------------------------------------

<u>Programs</u> <i>Steve Gelband</i> Ira Adler Gail Bingham Sharyn Greberman Jean Hanson Kent Mason Paul Taylor Jean Yuan	<u>Membership</u> <i>Chuck Lee</i> <u>Exhibits</u> <i>Bill Olson</i> Sybl Erdman Evelyn Jacob Dawn Sikkema Alan Simmons	<u>Competition</u> <i>Judy Switt</i> <i>Prints</i> Bill Ho Bill Richards <i>Electronic</i> Willem Bier Tom Field John Willis	<u>Judges</u> <i>Ken Goldman</i> Stuart Reiter Chet Stein <u>Webmaster</u> <i>Tom Field</i> <u>Lens & Eye</u> <i>Lori Ducharme</i>	<u>Hospitality</u> <i>Cynthia Hunter</i> Alla Doroshko Mike Fleming Terry Van Houten Steve Lapidus Jim Render Virginia Render <u>New Member Liaison</u> <i>Gail Bingham</i>	<u>Field Trips</u> <i>Cheryl Naulty</i> Raymond Ao John Barnes Gail Bingham Barbara Delouise Deeva Garel Bobbie Havel Cynthia Keith Steve Silverman
--	---	---	--	---	---

Voting members in bold

<u>Education</u> <i>Chris Hanessian</i> Tom Field Tatiana Watson	<i>Kent Mason</i> Roy Sewall Alan Sislen	<u>Community Outreach</u> <i>Joel Hoffman</i> Judy Switt Chris Hanessian	<i>Bob Peavy</i> Kent Mason Meryl Silver Ron Deitrich	<u>Photo Essay</u> <i>Stu Mathison</i> Willem Bier David Davidson	<i>Tom Field</i> John Pan John Willis
--	--	---	--	--	---

<u>Competition Image Review</u> Gordie Corbin Tom Field Bob Peavy	<i>Alan Sislen</i> Judy Switt Anita Van Rooy	<u>Long-Range Planning</u> David Davidson Bob Dargel Lori Ducharme Tom Field	<i>Chuck Lee</i> Bob Peavy Paul Taylor	<u>Print Galleries</u> Bill Seelig Claudia Seelig
---	--	---	--	--

Awards Event: John Villforth **PSA Representative:** Judy Burr **Database Administrator:** Roy Sewall

FIRST CLASS MAIL

