

# The Lens and Eye



Volume 54 Number 3 | November 2018 | Editor: Cherry Wyman | Website: [www.nbccmd.org](http://www.nbccmd.org)

## Calendar

*Events start at 7:30 p.m. unless otherwise noted.*

### November Events

- Nov 2-4** Nature Visions Photo Expo
- Nov 7** Competition: Selective Focus
- Nov 7** 10 a.m. Baltimore B&O Railroad Museum Field Trip
- Nov 14** Program: Member Expo
- Nov 28** Program: Photographing East Africa

### December Preview

- Dec 5** Competition: Facial Expressions
- Dec 12** Program: Vertical Panoramas - Churches
- Dec 19** Board Meeting

## November Competition Theme: Selective Focus

The creative use of depth-of-field to direct the emphasis to a particular part of the image by deliberately placing surrounding elements out of focus. This generally requires a shallow depth of field, or other techniques, where the background and/or foreground are out of focus. (Must be taken on or after Nov. 1, 2016.) **The deadline for electronic images is 7:30 p.m. on Sunday, November 4.**

For more winning images from the October 3-Month Open competition, see pages 12 - 17.



*Papua New Guinea Dancer © Kathryn Mohrman*

# Nature Visions Photography Exposition 2018

Nature Visions Photography Exposition (NVPE) 2018 is now less than two weeks away -- Nov. 2-4, 2018. The location will be the same as last year, the Hylton Performing Arts Center, Manassas, VA. The overall schedule will be similar to last year, with a full day seminar on Friday followed by two days of seminars, lectures, vendors, workshops, parrot shoots, raptor shoots, image reviews, and other activities. The schedule again includes numerous well-known speakers including Thomas Heaton, Julieanne Kost, Cole Thompson, Denise Ippolito, Tim Cooper, and numerous others. All NBCC members are urged to attend. Details on the program can be found on the NVPE webpage (<http://naturevisions.org>).

- John Norvell, Nature Visions Chair

## November 7 Judge: Josh Taylor

Josh has presented photography workshops at the Smithsonian National Orchid Show, Edith J. Carrier Arboretum at JMU, U.S. Botanic Garden, Brookside Gardens, Sarah P. Duke Gardens, Nature Visions Photo Expo, Adkins Arboretum, and Longwood Gardens. In addition to being a former Canon Camera instructor, Josh speaks at camera and garden clubs, judges photographic competitions, and exhibits his photographs in gallery shows. He is a member of Garden Writers Association, National Association of Photoshop Professionals, and member and past president of the Northern Virginia Photographic Society. Josh was voted best garden club speaker in 2005 and was a judge for the 2009 Garden Writers Association National Media Awards and the 2010 Nature Visions Photo Expo. Longwood Gardens selected Josh as its Instructor of the Month (October 2010) and was a selected photographer to assist the public in photographing Bruce Munro's *Light: Installations* (2012) and The Main Fountain Garden (2017 and 2018). Now, he's enjoying his retirement from photography.



Photo © Josh Taylor

- Debbie Menditch, Judges Committee

## November 7 Field Trip - B&O Railroad Museum

Our next field trip will be to the B&O Railroad Museum in Baltimore (<http://www.borail.org/>) on Wednesday, November 7. We will meet at the museum (901 West Pratt St., Baltimore MD 21223) at 10 a.m., when it opens. The museum houses collections of 19<sup>th</sup> and 20<sup>th</sup> century artifacts related to America's railroads including many pieces of rolling stock (locomotives, cars, etc.) and related paraphernalia. Tripods are allowed and recommended; wide angle zooms and macro lenses will be the most useful. The entry fee is \$20 (\$17 for seniors 60+), and parking is on-site and free. The museum is handicap-accessible and ADA compliant. If you are planning on coming, please email Jim Turner ([Jim\\_Turner\\_1945@yahoo.com](mailto:Jim_Turner_1945@yahoo.com)) so I can look for you and send you updates, if any. People on the wait list are welcome.

- Jim Turner, Field Trips Committee

### Contents of This Issue

- 2 November events and member exhibits
- 6 Splinters from the board and leadership gallery
- 7 PSA News
- 9 Baltimore Portraiture Field Trip Images and Photo Essay Reminder
- 10 Competition results and winning images
- 18 Roll Call



## Mark Your Calendars: 2018 Member Expo Coming November 14 at 7:30 p.m.

You may recall that the purpose of the Member Expo (ME) is twofold: (1) to give all NBCC members an opportunity to share their work, and (2) for NBCC members to learn about – and be inspired by – the creative things their fellow members are doing.

This NBCC event is totally non-competitive and informal.

New NBCC members: This program is especially for you, both as a participant and as an audience member. It will give you a chance to show other members some examples of your work and interests, and you can learn about what other members are doing. Please put it on your calendar and plan to participate and/or attend.

Please make sure that if you are planning to participate and enter images in the ME that you plan to attend in order to show your work. ALL NBCC members are encouraged to participate. As in prior years, **you may submit up to 12 images**. We recommend that each presentation have a central theme or common thread (e.g., flowers, bugs, summer, portraits, B&W, etc.).

Again, this year: **we are accepting up to twelve, 10-second videos in lieu of still images**. The videos will have to be submitted separately (one per email) or supply a thumb drive to Diane Poole or David Terao prior to the ME. The still images or video work do not have to be current. ALL levels of expertise are encouraged to participate; this is NOT just for the best images in the club. Entering images in ME does not restrict these images from being entered into other venues, including competitions, exhibits, photo essays, etc.

Submit your images in a process similar to the Electronic Image Competition: **JPG files with maximum dimensions of 1920 pixels (width) and 1200 pixels (height)**. Detailed submission guidelines can be found at: [http://www.nbccmd.org/docs/EIC\\_submissionguidelines.pdf](http://www.nbccmd.org/docs/EIC_submissionguidelines.pdf)

However, ME uses a different filename convention: **YourName-Theme-SequenceNumber.jpg**. Use a leading zero for sequence numbers 01-09 so your images are displayed in the order you set. For example: JohnDoe-Birds-03.jpg; SallySmith-Clowns-11.jpg

At the presentation, we allow some time for comments/discussions during or after each member's showing to provide any useful or interesting background information.

In conclusion, get ready to be surprised by the quality, depth and breadth of your fellow members' work. Undoubtedly, we'll learn things from each other: places to go, techniques to explore, and new adventures to creativity.

Please use this email address to submit your images: **programs@nbccmd.org**. The portal for entering images will open **November 1** and close **COB November 11**.

- Diane Poole, Programs Committee

# November 28 Program Night - Photographing East Africa with Nikhil Bahl



A photo safari to East Africa is often considered an experience of a lifetime. An African safari is a thrilling chance to see wild animals going about their daily lives in their natural habitat. East Africa (Kenya and Tanzania) has a huge variety of national parks that offer adventurous opportunities to see wildlife up close. In his presentation, Nikhil will cover two main aspects of a trip to East Africa:

- 1) What a photographer should consider before attending a safari. This will include choices that you have for lodges/camps, how vehicles are set up, best times to visit, tour companies, etc.
- 2) The photographic opportunities and challenges, along with a variety of tips from what gear to carry, how to be prepared for most situations, camera settings for various photo ops, etc.

This presentation is ideal for those considering a trip to East Africa or if you simply enjoy wildlife photography.

Nikhil Bahl is a full-time professional photographer, author, educator, workshop instructor and environmentalist residing in the Washington, D.C. area. Each year Nikhil leads numerous photography tours and instructional workshops in the U.S. and abroad. His teaching encourages participants to advance beyond ordinary photos and develop their own style and vision. Nikhil is a popular speaker at photography clubs, expos and industry events. He authored the acclaimed ebook, *Creative Interpretations*, and writes articles on the creative and technical aspects of photography. His work can be viewed at [www.nikhilbahl.com](http://www.nikhilbahl.com).

- Neil Hermansdorfer, Programs Committee

## Member Exhibits

**Kathryn Mohrman** has a one-person show featuring images from her Kenyan safari at Beanetics Coffee Roasters, 7028 Columbia Pike in Annandale, Virginia. Open 8:30am - 6:00pm daily until Nov. 10.



*Elephant Portrait* © Kathryn Mohrman

**Carol Walsh** will have seven fine art photographs in the art exhibit, "Fantasy, Sci-Fi, and Humor". Her composited images, which are personal statements about her memories, emotions, dreams and fantasies, will be shown at the Bohrer Gallery, in the Gaithersburg Community Center, between November 5th and January 12th. The artist's reception will be on Thursday, November 8th from 7:00 to 8:30.



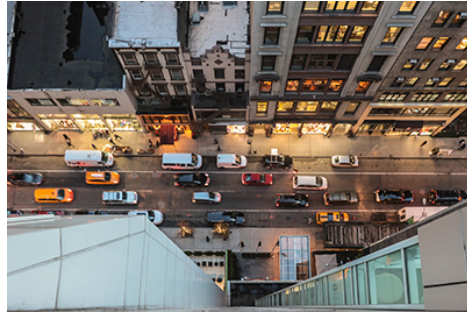
*Emerging* © Carol Walsh



**Kathryn Mohrman, Thomas Marchessault and Jean Pierre Plé** have several images in the fall/winter Crystal City Fotowalk Underground exhibit on travel photography. It is sponsored by Exposed DC and is at Gallery Underground, 2100 Crystal Drive in the Crystal City Shops (<http://exposeddc.com/crystal-city-fotowalk-exhibitions/>).



*Georgian Bay © Jean-Pierre Plé*



*Cross Street Manhattan © Tom Marchessault*

### Dual Exhibit by Roy Sewall



Roy Sewall will have a dual exhibit **November 1 to 28 at the Artists & Makers Studios, 11810 Parklawn Drive, Rockville, Maryland 20852**. This facility is a hub of creative and artistic work. There are two adjacent galleries, and Roy will have two completely different yet concurrent exhibits.

"C&O Canal Panoramic Views" is a recent project that returns Roy to his roots and long-time stomping grounds. The 14 wide-view photographs, printed on metal, depict the exceptional beauty of the canal during its more tranquil seasons: fall and winter.

"*Mysterra*" is a body of work of fantasy, whimsy, and spirits. The 26 framed photographs depict scenes that Roy cannot possibly see but could imagine; they are illusions. Many of the people depicted have extraordinary abilities. Roy says, "I have always loved magic. I find it to be a thoroughly refreshing departure from our daily experience of being overwhelmed by information and facts. I don't want to know how the trick was done; I just want to take in the ingenuity and the mystery. And this is how I hope people will react when they see *Mysterra*."

The opening reception is **Friday, November 2, from 6 to 9 p.m.** For those unable to attend on that evening, a second smaller reception is planned for **Saturday, November 10, from 1 to 3 p.m.**



## Splinters from the Board

Our program year is progressing quite well, and even the incessant rain hasn't dampened our membership's enthusiasm for participating in our meetings and other activities. The competitions from our first two months have resulted in quite a few new members getting recognized with winning images; kudos for putting yourself in the game so quickly! One of the challenges with competitions is that you don't get to know who made the incredible images that DON'T win awards, and we certainly have a good number of those as well! So, kudos to all who are putting their work out there; I have hopes of helping us to find a way to let the makers of all the images be known after the competitions. But not today!

There have already been some very successful field trips, and by the time you are reading this, the first overnight field trip for the year will have been completed. It takes a lot for many of these events to be organized, so please make sure to keep the coordinator informed if your plans change.

One of the issues we have had, unfortunately, is with the Education Committee. We have an incredible program, but several of the facilitators have expressed frustration/disappointment with people signing up and then not being able to attend a reasonable number of sessions. They make every attempt to identify the dates up front, so please check before requesting to sign up that you will be able to make the sessions. If you can't make all or almost all, please check with the facilitator to be sure it is ok with him/her.

One of my initiatives, as you may recall, is to promote our members more actively. To that end, you may remember that on this year's membership application you were asked to provide the URL of your website, if you had one. Robert Barkin, our webmaster, is in the process of updating the Gallery tab to include links to each of the members' websites provided on the application. I took the time to look at ALL OF THEM, and I was incredibly impressed with the quality and variety. It's a great way to get to know your fellow members (or at least their work!) a bit better. There's quite a variety in website designs, so if you're just thinking about creating or changing yours, you might just find inspiration on someone else's!

As always, if there is a suggestion, concern or acknowledgement, please don't hesitate to send it along!

*- Toni Robinson, NBCC President*

## Leadership Gallery

Each issue we publish photos of the leadership team so that members can identify us and come up and chat with us or ask questions.



*David Terao, Programs Head*



*Sarah Salomon, Secretary*



*Roy Sewall, Director and  
Immediate Past President*

## PSA News

The bulk of PSA news is about the conference in Salt Lake City. Several members of NBCC attended all or part of the conference and have sent me their reviews. As always, opinions vary depending on what programs were attended, trips and workshops taken. As with any volunteer organization, unexpected things happen and this year there were changes in programs' times and locations. Emails were sent, but some either never received them or didn't check their email. This was the first year that attendees were notified that way. The equipment committee has the toughest job at the conference and this year there were technical problems, including at my presentation of the winning travel essays.

Larry Mars commented on the technical problems mentioned above. He felt some of the workshops were elementary, but there have to be programs and workshops for all skill levels. Unfortunately, he missed some programs due to changes. He also said, "The 'inspirational' talks were well delivered, but imparted little new information. The table top settings were not too good and the models were fair."

Nancy Wolejsza, Louise Roy and I all went on an early morning trip to—as Nancy put it—"photograph wild horses at sunrise in their natural environment. We spent several hours observing the herd, at first from a distance and then quite close as they got used to our presence." Nancy continued by saying, "Rick Sammon gave a wonderful presentation about staying motivated and inspired with your photography through looking for unusual angles and subject treatments and always trying to evolve as a photographer. His presentation included 'out takes' which didn't make the grade and the reasons why."

This year there seemed to be a special emphasis on nature. Lisa Langell presented a session on transforming nature images into art work for home decorating. Roy Killen presented a program on the definition and rules for competing in the Nature Division exhibitions. He included the distinction between what is considered nature and what is wildlife.

As with other conferences, it was a great week to explore new ideas and renew old friendships. Louise thought "Nancy has described the conference rather well and I concur with her summary, especially with regards to the wild horses event and the Rick Sammon presentation." We also enjoyed a one-day visit to Antelope Island State Park on the Salt Lake, the largest of one of some fifteen islands (numbers vary) on the lake. We were not very fortunate about photographing antelope, but we did capture many bison. There also was a one-day excursion on a very old train through the spectacular Heber Valley to Heber City in the northwest mountains of Utah. Personally, it was a great learning week, what with the lectures (as noted by Nancy) and very importantly, with Nancy and Judy (and others) patiently assisting me in the learning of new photography techniques. Exploration of the city of Salt Lake and various restaurants added to our week of enjoyment.

I can certainly echo what Nancy and Louise said as we attended some of the same programs. The evening programs varied with each having a different theme. The program on the Milky Way and nightscapes had beautiful images, but it became too complicated for me — as did some post-processing lectures. I enjoyed the time-lapse program by Shiv Verma, APSA, who is an excellent speaker and photographer, but am not sure I will try it very soon. However, it is always good to be exposed to various techniques. Gerald Emmerich, Jr., HonFPSA, GMPSA, presented an excellent program, "Tanzania: Crater and Plain". Although a program on sensor cleaning was presented twice, I did not attend but took advantage of free cleaning of two cameras by Curt Fargo — who developed his own sensor cleaning equipment, The Dust Patrol LLC. He made the cleaning look very easy and it looked like good equipment. For those interested, his website is <http://www.thedustpatrol.com>. His equipment is not available locally or through B&H, but Hunt's Photo does carry it.

Another program I enjoyed was the presentation by Lynn Troy Maniscalco, HonPSA, EPSA, as part of her receiving the PSA Lifetime Achievement Award. This award was established in 2012 as one of the most prestigious awards and Lynn is the first woman to receive it. She is a well-known photo-journalist who has held many positions in PSA, the Delaware Photographic Society and the Delaware Valley Council. Her program was varied and moving as she showed phases of her life, including the death of a grandchild, family memories and travel images.

The Mid-Atlantic Chapter was the First Runner Up in the Chapter Showcase Competition. Several NBCC members had images in the showcase--Larry Mars, Nancy Wolejsza, Jim Turner and Judy Burr. Two Chapter members received individual awards—a Bronze Medal and a Silver Medal. The chapter has always done well



in the competitions. You can view the showcase at <https://psa-photo.org/index.php?2018-chapters-showcase>.

PSA holds a club/chapter newsletter competition every year and NBCC member, Diane Poole, the editor of the NIH Club newsletter, was a big winner. The [Cameraderie](#) was the *Best of Entries* and was also voted as having the *best Environmental article*, the *Best variety*, the *Best Table of Contents (tie)*, the *Best calendar (tie)*, *Best Front page (tie)*. Congratulations to Diane and the NIH Club. Links to all the winners are here--<https://psa-photo.org/index.php?newsletter-contest-2018-results>.

## PSA Member News

Congratulations to **Nancy Wolejsza** for being awarded a Silver Medal in the Photojournalism Story competition. Her award was for "Tango in Buenos Aires." Nancy is making good use of this essay since it has previously won a Gold Medal in the Travel Essay Competition in 2016, and an Honorable Mention in the Projected Image Division Essay Competition last year. Some essays fit multiple categories. **Nancy, Larry Mars and Judy Burr** all had images accepted in different divisions of the yearly PSA International Exhibition. All the PSA exhibition results can be seen here: <https://psa-photo.org/psa-international/>. It is always worth looking at images that are accepted. There are many entries and judging has to be done in a relatively short time. Sometimes images that don't meet the definitions of the reality based divisions slip through.

I encourage all NBCC members to try some International Exhibitions. It provides an opportunity to see how your work compares to that of photographers around the world. You do not have to be an individual PSA member to enter, but any acceptances will not count for anything unless you join in a specified time. Circuits are a good way to start since images are judged multiple times.

- Judy Burr, PSA Representative

### Upcoming Competitions

December - *Facial Expressions*

January 2019 - *Open*

February - *Hometown DC*

March - *At Play*

April - *Panorama*

May - *Black and White Open*

*Descriptions of each topic can be found on the NBCC website and in the program booklet.*



## Baltimore Portraiture Field Trip Images

On October 6, the Winans Mansion in Baltimore provided a stunning backdrop for an NBCC field trip focused on portraiture using flash. Fourteen NBCC photographers and 5 models rendezvoused at the French Renaissance revival style mansion. Special thanks to our host, Agora, Inc., for granting access to their beautifully restored property. James Corbett and Joel Hoffman set up off-camera flashes and softboxes for shooting the models. Joel and James provided some basic instruction in making the best use of off-camera lighting. The photographers enjoyed working with the models and gaining some insights into effectively lighting subjects in challenging situations. The best images were shared with the models for their portfolios. Stay tuned for a GordieGram to check out the images.

- James Corbett, Field Trips Committee



Model: Kevin Davila © Robert Barkin



Model: Vanessa Ulrich  
© Guillermo Olaizola



Model: Ta'Ron Silver  
© James Corbett

### Photo Essay Reminder

Any members thinking about preparing a photo essay for the March 2019 show should notify one of the essay committee members and indicate the topic(s) you are considering. We seek variety in the essay topics, and try to avoid duplicate/similar topics.

Once you indicate your potential topic we will assign a committee member to assist, as needed. Draft essays should be submitted not later than the end of December. Final essays by the end of February.

Committee members include: Stan Collyer, Dave Davidson, Lori Ducharme, Tom Field, Morris Liss, Mark Segal, John Willis, and Nancy Wolejsza, and Stu Mathison.

Further details at: [nbccmd.org/photoessays](http://nbccmd.org/photoessays).

# Competition Results: October (3-Month Open)

Judge (EIC): Roz Kleffman

Judge (Prints): Lynn Silverman

PRINTS			ELECTRONIC IMAGES		
--------	--	--	-------------------	--	--

## Intermediate (13 entries)

1st	Steve Lapidus	Handle with Care
2nd	Steve Lapidus	Taking Flight
3rd	Brian Perkinson	Bodie Island Light
HM	Kay Norvell	Bear Cub

## Novice (12 entries)

1st	Kathryn Mohrman	Papua New Guinea Dancer
2nd	Pauline Jaffe	Blue Heron
3rd	Marc Goldstein	One Person's Junk
HM	Marc Goldstein	Taking a Rest

## Advanced (21 entries)

1st	Nikos Zacharakis	Day is Driving Away
2nd	Bruce Cyr	Fair Couple
3rd	David Clemmer	Back Yard Bird Feeder
HM	David Clemmer	Maryland Dove 2
HM	Tammy Trocki	Together
HM	Jack Rosenberg	Botanical???
HM	Jack Rosenberg	Wedding Rose

## Intermediate (31 entries)

1st	Lorraine Chickering	Lighting Lonaconing
2nd	Pat Joseph	Gatekeeper
3rd	Robert Barkin	Lonely Corridor
HM	Michael Blicher	Biltmore Lilly
HM	Diane Poole	The Armenian Monk
HM	Jill Randell	Glacier's Burn Trees
HM	Claudia Seelig	Race On
HM	Claudia Seelig	Reflection
HM	Ray Whitman	Canoe at Sunset
HM	Cherry Wyman	Falmouth

## Advanced (30 entries)

1st	David Terao	High Wheel Bike Race
2nd	Chet Stein	Bee Eater, Masai Mara
3rd	Bob Greenberg	Milky Way Over Crater Lake
HM	Jose Cartas	Candangos Shadow
HM	Bruce Davis	The Pentagon
HM	Steven Silverman	The Watchman
HM	Chet Stein	Leaping Leopard, Serengeti
HM	David Terao	Rose, Lips and Nails
HM	John Willis	Joyful Surf
HM	John Willis	Ohiopyle Bike Trail

# NBCC Competition Results

## Cumulative Scores Through October 2018

### PRINTS

#### *Intermediate*

- 19 Steve Lapidus
- 15 Kay Norvell
- 10 Louise Roy
- 8 Brian Perkinson, Dave Sternbach

#### *Advanced*

- 28 Jack Rosenberg
- 21 Tammy Trocki
- 20 David Clemmer
- 17 Bruce Cyr
- 12 Carol Walsh
- 10 Nikos Zacharakis

### ELECTRONIC IMAGES

#### *Novice*

- 24 Marc Goldstein
- 21 Pauline Jaffe
- 18 Kathryn Mohrman
- 9 Sue Gren
- 6 Max Kantzer

#### *Intermediate*

- 18 Robert Barkin, Claudia Seelig
- 15 James Corbett
- 14 Michael Blicher
- 12 Diane Poole, Peter Winik, Cherry Wyman
- 10 Lorraine Chickering
- 9 Pat Joseph
- 6 Beth Altman, Dillar Boland,  
Neil Hermansdorfer, Tom Marchessault,  
Jill Randell, Ray Whitman

#### *Advanced*

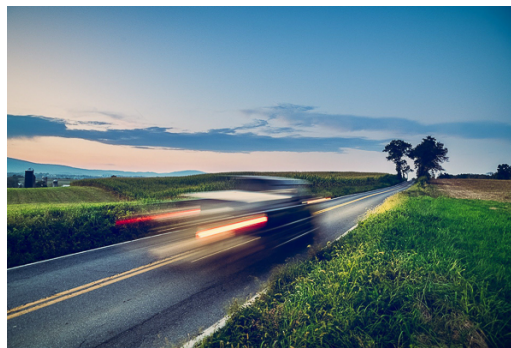
- 28 David Terao
- 15 James Chia, Chet Stein
- 12 John Willis
- 10 Nancy Wolejsza
- 8 Bob Greenberg, Chuck Lee
- 6 Gail Bingham, Jose Cartas, Melissa Clark,  
Bruce Davis, Carol Lee, Steven Silverman

# 1st Place Winners, October (3-Month Open) Competition



Novice EIC - Papua New Guinea Dancer  
© **Kathryn Mohrman**

*In August I went to Papua New Guinea on a photo tour run by Jim Cline; the leader was Karl Grobl. While we traveled in several different areas of the country, the highlight for me was a series of cultural festivals featuring traditional costumes, singing, drumming, and dancing. Traditionally, such festivals (called singsings) were celebratory occasions, although now they are more focused on cultural pride and maintaining traditions among the hundreds of different tribes in the country. Plus, they are now a tourist attraction. We had a chance to mingle informally with performers as they applied face paint, arranged feathers in their headdresses, put on jewelry, oiled their bodies, and so on. For many of them, the preparation took several hours.*



Advanced Prints - Day is Driving Away © **Nikos Zacharakis**

*This is an image from the side of the road, taken while driving around in Maryland. The sky at dusk, the lines of the road and the green of the fields caught my attention. Initially I shot only the scenery, but it was too static. I climbed on the very top of my car for a better perspective and I waited for a car to pass, in order to capture it in movement with a slower shutter speed. The result is a combination of three different exposures of the same image, in order to catch the light of the sky and the darker sides in the fields.*



Intermediate Prints - Handle with Care © **Steven Lapidus**

*This picture was taken in Iceland on August 3, 2018 at 12:00 noon while aboard a ship navigating ice floats that had broken free from a nearby glacier. It was cold and raining and I was fortunate that my Olympus OMD EM1 Mark II is splash resistant! The captain lowered a net behind the boat to dredge for sea life, and after about 15 minutes a crane and winch pulled the net from the water, filled with mussels, crabs, snails, starfish, scallops and this urchin. I was attracted to the urchin by its vibrant purple color and needle-like spines. The image was processed in Lightroom, applying typical white balance, clarity, sharpening, tone curve adjustments, cropping and a vignette. No plugins or other post-processing software was used.*





*Intermediate EIC - Lighting Lonaconing*  
**© Lorraine Chickering**

*I saw a collage of Lonaconing Silk Mill images on the internet a long time ago that had several entries with one of these antique "Edison" style lightbulbs. On my first trip, I did not find any specimens to use.*

*On this September trip, I was hoping to make my "pre-visualization" a reality. I found this bulb in the office and carried it with me all afternoon. There is no electricity in the mill and it was an overcast day. So most rooms were VERY DARK!*

*There was only one room where I could try to make my vision work. This is one of my attempts.*

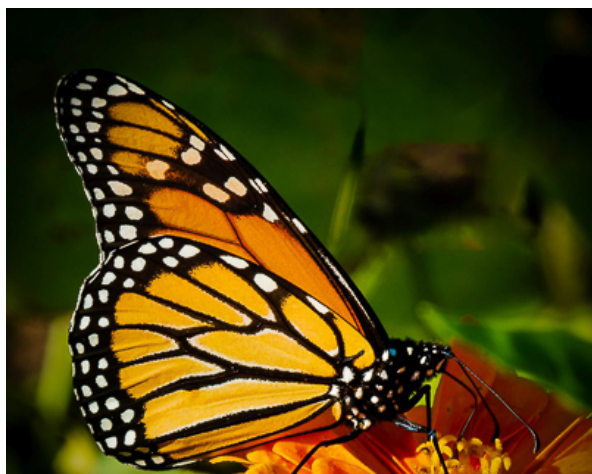
*Technical data: HDR series shot with a Nikon D810 mounted with a Nikon 18-300mm lens. ISO: 100; f13; 56mm; 1.6 to 10 seconds.*



*Advanced EIC - High Wheel Bike Race*  
**© David Terao**

*This image was taken at the National Clustered Spires High Wheel Race in Frederick, Maryland. I don't do many panning shots and was happy this image came out so nicely. The difficulty was trying to find a spot where the ugly yellow police-line tape wasn't in the background and the late-afternoon sun was not behind the racers. Shot handheld with a Canon 5D Mk III and 50mm f/1.2L lens. Exposure was 1/15 sec @ f/16 and ISO 100.*

## 2nd Place Winners, October (3-Month Open) Competition



*Intermediate Prints - Taking Flight*  
© **Steven Lapidus**

*This picture was taken at Brookside Gardens, Wheaton, MD on September 30, 2018 in late afternoon light, at 4:20 p.m.. I was practicing using my camera's continuous autofocus feature when I happened upon this monarch butterfly. I captured 30 images, including this one, using sequential low speed shutter release. The image was processed in Lightroom, applying typical white balance, clarity, sharpening, tone curve adjustments, cropping and a vignette; I also used Photoshop's Content Aware Fill to remove distracting purple background flowers and cloning to lower select highlights. No plugins or other post-processing software was used.*



*Advanced Prints - Fair Couple* © **Bruce Cyr**

*Taken on Tammy Trocki's Montgomery County Fair field trip, 8/16/2018. The couple was marching down the main agricultural road to the carnival as I was driving up the same road at about 2 mph on my scooter. As we approached each other I balanced the camera on my left thigh in portrait orientation with my right hand. I fired a burst using the Sony A7RIII's silent shutter mode through the Rokinon f2.8 35mm pancake lens at f6.3, 1/6400sec, 1600 ISO. After a year of trying, it was my first street photography success.*



*Novice EIC - Blue Heron* © **Pauline Jaffe**

*A year or two ago NBCC had a program speaker who spoke about wood ducks that he photographed in Baltimore. Coincidentally, he mentioned that there were wood ducks at Buddy Addick Lake in Greenbelt. I have gone to Buddy Addick Lake to photograph the wood ducks a couple of times in the past but on this visit I didn't see the wood ducks. I was so disappointed. I was playing around with my camera, taking photos of the foliage, when I spotted this beautiful blue heron. Eureka! The image was taken with a Canon Rebel T2I. Tamron 70-300 lens. I was quite some distance from the heron. Capturing the blue heron's reflections in the lake was a real treat!*



*Intermediate EIC - Gatekeeper © Pat Joseph*

*My wife and I were crossing the foot bridge at the C&O Canal's Widewater area (between Great Falls and Old Angler's Inn) when she spotted the great blue heron standing next to the stop gate sometime between 8:00am and 10:00am. We were excited by the possibilities as the heron was nicely framed by the gate and bathed in morning light. After waiting a bit, we finally got a profile of the bird rather than the back of its head. All post-processing was performed in Lightroom.*



*Advanced EIC - Bee Eater, Masai Mara © Chet Stein*

*The image was taken on this summer's African trip to the Serengeti and Masai Mara. The image was taken in the early part of the day when the bee eaters are typically feeding, and the lighting is great. Given that the bird was close to the vehicle, I was able to easily focus down fully on the bird.*



## 3rd Place Winners, October (3-Month Open) Competition



*Intermediate Prints - Bodie Island Light*  
© **Brian Perkinson**

Light pollution limits locations in the eastern states where the Milky Way Galactic Center is visible. The Outer Banks, south of Kitty Hawk, is an excellent location. Summer months are best. I attempted this shot last summer and was disappointed with the result. I went back this summer. Because I was working in near total darkness - and flashlights are not welcome- I decided on camera settings prior to the shot. I taped down key settings, focus, f/stop, etc. I used a NIKON D810, ISO 3200, focal length 25mm, 20-second exposure. White balance 3800. Time: 10:25 PM. (35 56' 13"N 75 42' 32"W).

*Intermediate EIC - Lonely Corridor* © **Robert Barkin**

*While on a photo workshop at Ellis Island Hospital, which has stayed largely unrestored since it closed decades ago, we walked into an area that I recall was primarily reserved for patients with mental health problems. Down the corridor, the doors were left open, and the hallway led to a single window at the back. I used a two-shot HDR to control the light for the window. I made sure that the first open door gave a glimpse of a room to give the shot context. I wanted to portray the isolation that the people must have felt who stayed in the room*



*Novice EIC - One Person's Junk* © **Marc Goldstein**

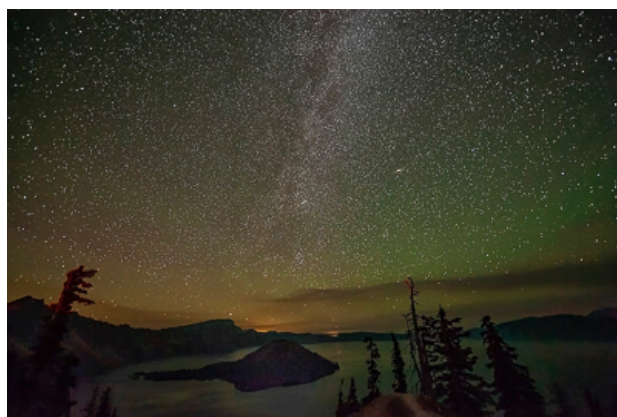
*One Person's Junk* was taken at an antique barn and store in Buckeystown, MD. Several people have rental stores there, so they all have different kinds of merchandise. The camera settings were ISO 400, 31mm with a Sigma adjustable 80 - 300, f10 at 1/400th of a second.





*Advanced Prints - Back Yard Bird Feeder © David Clemmer*

*The objective was to catch the stars in the night sky. I set the exposure (20mm Sigma lens, 15 sec. f 2.8 ISO 100), I then balanced three LED lights set for 3200k to match the exposure. One light to the right, one to the left and one directly behind the bush shining into the back of the bush. An extra comment: My "ship" picture was done essentially the same way, but with one light. 20 sec. f2.0 ISO 500.*



*Advanced EIC - Milky Way Over Crater Lake  
© Bob Greenberg*

*While in Oregon at Crater Lake NP in mid-August, it was hazy and smoky from all the wildfires. In fact, the entire West was very smoky. Fortunately, the sky cleared our last day there and a NPS Ranger conducted a watch for the Perseid meteor shower. Although I didn't capture any meteor images, I was able to take this image of the Milky Way. Technical info: Nikon D3 camera with a 14-24 mm wide-angle f/2.8 lens at 14 mm, ISO 3200, 33 second exposure. Gitzo tripod.*

## ROLL CALL: NBCC OFFICERS, COMMITTEES AND APPOINTMENTS, 2018-'19

### OFFICERS

*President*  
Toni Robinson

*Vice President*  
Rich Chitty

*Secretary*  
Sarah Salomon

*Treasurer*  
Steve Parker

### DIRECTORS

Robert Barkin  
Kent Mason

Roy Sewall  
Cherry Wyman

### STANDING COMMITTEES

#### Competition

Judy Switt\*

#### *Prints:*

Dick Pelroy

Jim Turner

Nikos Zacharakis

#### *Electronic:*

Steve Lapidus

Willem Bier

John Willis

#### Education

Jill Randell\*

Greg Holden

Alan Sislen

Roy Sewall

Kent Mason

Evelyn Jacob

#### Exhibits

Lester LaForce\*

Dawn Sikkema

Sarah Salomon

Alan Simmons

John Willis

Guillermo Olaizola

Jack Rosenberg

Stan Collyer

#### Field Trips

Gail Bingham\*

James Corbett

Jack Rosenberg

Dick Pelroy

Jean-Pierre Plé

Diane Poole

Tammy Trocki

Jim Turner

Beth Altman

#### Nature Visions

John Norvell\*

Ray Whitman

Steve Silverman

Beth Altman

Guillermo Olaizola

#### Programs

David Terao\*

Evelyn Jacob

Neil Hermansdorfer

John Norvell

Kent Mason

Diane Poole

Ray Whitman

Rich Chitty

#### Membership

Guillermo Olaizola\*

Mark Segal

#### MPA

Carol Lee\*

Stephanie Banks

### SPECIAL COMMITTEES

#### Community Outreach

Joel Hoffman\*

Kent Mason

Jack Rosenberg

Bob Peavy

José Cartas

Judy Switt

#### Equipment

Robert Barkin\*

Tom Marchessault

Neil Hermansdorfer

Steve Frahm

Steve Lapidus

#### Strategic Planning

Toni Robinson\*

Bill Ho

Audrey Rothstein

Gail Bingham

#### Hospitality

Terry Van Houten\*

Ira Adler

Jitesh Batra

Jim Render

Virginia Render

Geri Millman

Claudia Seelig

Ray Whitman

#### Photo Essay

Stu Mathison\*

Stan Collyer

David Davidson

Tom Field

Morris Liss

John Willis

Lori Ducharme

Mark Segal

Nancy Wolejsza

#### End-of-Year

TBA

### OTHER APPOINTMENTS

*Asbury Liaison*  
Rich Chitty

*Church Liaison*  
Rich Chitty

*Database Administrator*  
Bruce Cyr

*Webmaster*  
Robert Barkin\*  
Tom Field

*Share & Care*  
Pauline Jaffe

*PSA Representative*  
Judy Burr

#### Facebook Group

*Administrator*  
Gail Bingham\*  
Guillermo Olaizola

*Lens & Eye*  
Cherry Wyman\*  
Pauline Jaffe

*Yahoo Group*  
*Administrator*  
Bruce Cyr

*Dinner*  
*Reservations*  
Kay Norvell

*GordieGram*  
*Administrator*  
Gail Bingham\*  
Toni Robinson

\* committee or group chair