

The Lens and Eye



Volume 51 Number 5 | January 2016 | Editor: Lori Ducharme | Contact: newsletter@nbccmd.org | www.nbccmd.org

Calendar

JANUARY EVENTS

- Jan 6** - Competition Night, 7:30pm. Theme: Still Life of Fruit and/or Vegetables. Judge: Don Berkmeier
- Jan 13** - Program Night, 7:30pm. Topic: Plugins for Lightroom & Photoshop. Speaker: Brian Zwit
- Jan 18** - Field Trip, Diyanet Center of America, Lanham, 2:00pm
- Jan 20** - Board Meeting
- Jan 27** - Program Night, 7:30pm. Topic: Sports Imagery and Techniques. Speaker: Tom Rothenberg

FEBRUARY PREVIEW

- Feb 3** - Competition Night (Electronic)
- Feb 10** - Board Meeting
- Feb 17** - Competition Night (Prints)
- Feb 24** - Program Night

In this issue...

2016?! When did *that* happen?

NBCC rings in the new year in fine fashion, as usual. As you'll read in these pages, we follow our Still Life competition with two terrific programs - one on helpful plugins for post-processing, and one on sports photography techniques. We also have a fabulous field trip planned to the stunning Diyanet Center. You'll also read about a variety of educational opportunities, a call for exhibit entries, another of Jean's expertly written member profiles, and an essay detailing a unique approach to planning a bird photo shoot.

Make your resolutions now to join us for the full slate of activities in January and beyond. See you there!

— Lori Ducharme, Editor



January Competition Topic: Still Life of Fruit and/or Vegetables

An image in which one or more fruits/vegetables, arranged by the photographer, are the subject. Taken on or after June 1, 2014. [See the membership handbook for full topic description.]

Electronic submissions are due by 7:30pm on Sunday, January 3rd.

January Judge: Don Berkemeyer

Our January judge is Don Berkemeyer, who started working professionally 24 years ago, doing a mix of architecture, corporate portraits, and children and families, with a smattering of association work on Capitol Hill. He has made his living with 4x5, 2¼, and 35mm formats, and now shoots exclusively with Canon digital.

Don is also one of the retired principals of Berkemeyer-Hine Photography. In partnership with Susan Hine, Berkemeyer-Hine was a small firm of just two photographers. They spent a lot of their energy creating a business that was an expression of their love and compassion. They felt that their job was to first create a relationship, then to be of service. With that as their focus, their hearts stayed in the game longer than most firms of this size, and they were sought out by exactly the clients they most wanted to work for.

Don describes his photographic style as "candid, intimate, engaged photojournalism." Don and Susan closed the business and retired from photography last year. The firm's website is officially closed, but it can still be found, living on in perpetuity in the ethers of the web. Don still does the occasional wedding and product shot, but is now devoting most of his creative time to jazz and other music as a bassist and flutist.



Images © Don Berkemeyer

Jan. 13 Program Night: Plug-ins for Lightroom & Photoshop

Lightroom and Photoshop are great programs, but both lack some features that are helpful to photographers and, in the case of at least Photoshop, can be difficult to use. On January 13, NBCC welcomes Brian Zwit to share some useful advice on these and other editing tools. While Brian generally lightly edits his images, he uses many Lightroom and Photoshop plugins to speed his workflow and polish his images. During the evening, Brian will demonstrate some of the popular as well as some of the lesser known plugins for Lightroom and Photoshop and discuss when and how to incorporate them into your workflow. A handout with links to all the plugins demonstrated will be available.

Brian Zwit is a nature and outdoor photographer based in northern Virginia and is obsessed with capturing the elegance and majesty of unique landscapes, wildlife, and flora throughout the United States. His images are in private residences and corporate offices and have been used in regional magazines and for corporate and international publications. Brian teaches workshops, field trips, and classes and speaks to camera clubs, schools, and other non-profit organizations on creativity and photographic techniques. He is well known for his ability to distill complex topics to their essence and explain them in simple, easy to understand ways. His favorite assistant is Dingo, his Parson Russell Terrier, who really is not very helpful but is always ready for a walk in the woods.



Images © Brian Zwit

January 18 Field Trip - Diyanet Center of America

We have an opportunity to visit the Diyanet Center of America on Monday, January 18, with thanks to our new member Kasey Kaseman for the introduction and to Chuck Lee for the photographs. They attended the recent community open house where they met Sharif Salim, the community liaison and our host for the field trip. He has been very welcoming, and offers that the mosque is "eye candy" for photographers. I believe Chuck's photos support that idea!

We will meet at **2:00pm on January 18** and can stay as long as we wish. This is the Martin Luther King holiday, so hopefully it's a good day for those who normally would have to be at work. Some may prefer to get home before the rush hour, and others may want to stay to take photos at night. I think sunset is at 5:13 that day. I am told we can use our tripods anywhere, although we are asked not to take photos of worshipers. I will have more information after I go for a visit in early January. Please email me at gbingham@resolv.org to sign up.

Diyanet Center of America is an organization dedicated to providing religious and social services to Turkish people and all Muslims living in the United States. It is associated with or part of the Turkish American Community Center Inc., a non-profit organization which was founded by the local Turkish community in 1993 in Lanham, MD. Its mission includes uniting the Turkish-American community by providing a worship center, strengthening the relations between Turkish people and the American society, and providing a cultural home for the Turkish people.

ACC has recently completed a \$110 million dollar expansion and development of its Lanham, MD campus, located at 9704 Good Luck Rd, Lanham, MD 20706. As described on the web site, "the result is a small village that will be an important cultural hub for all visitors and residents of Washington DC area. Diyanet Center of America will be home to most impressive examples of Islamic architecture in the western hemisphere."

For more information, go to: <http://diyanetamerica.org/>

– Gail Bingham



Images © Chuck Lee



Jan. 27 Program Night: Sports Imagery and Techniques – Storytelling the Photojournalist Way

On January 27, speaker Tom Rothenberg will discuss techniques and equipment, and will review example images, showing how to better capture peak action, reaction and creating storytelling images of sports competition. These foundational concepts can be used from local area playgrounds to the most prominent sporting events in the world. We will discuss the methods, considerations and things a photographer should prepare for to successfully tell the story of sports competition.

Tom is an independent photographer in the DC metropolitan area who has earned considerable recognition for his freelance work. He regularly shoots for the Free Lance-Star, Zuma Press International, and various other media outlets across the country. Tom has been published in *Sports Illustrated*, *ESPN Magazine*, *SI for Kids*, and various newspapers and on-line news sources across the world.

Tom's approach towards his work and his clients are best described by his tag line, "Capturing the Fine Art of Our Life." He has a passion for creating editorial images that not only tell the story, but can do so in an artful manner.

When Tom is not capturing images, he is spending time with his family of 6: his wife, Allie; daughters, Nicki and Megan; son, Josh; and German Short-Haired Pointers, Max and Maci. They live in Spotsylvania County, Virginia.



Images © Tom Rothenberg

Save the Date

The annual **Horizon Photography Summit** is coming! This year's Summit is on **March 5 & 6** (Saturday and Sunday) in Wilmington, DE. On Friday, March 4, there will be "Creative Day" workshops in nearby Chesapeake City featuring Tony Sweet and Gail Meredith.

The fantastic roster of Summit photographer/instructors share their knowledge and enthusiasm about landscape, nighttime, underwater and travel photography, lighting, social media, B&W processing, creativity, Lightroom and more. Plus portfolio reviews and personal instruction.

Admission for the weekend is **\$179** if you register by January 20th. (Camera Club and Meetup Group members get an *additional* 5% discount.) For more information, and to register, visit the website:

<http://www.horizonworkshops.com/summit>

Member Profile: Adam Lowe

New member Adam Lowe is a professional photographer. Yes, to all of you readers who so aspire, he does portraits, weddings, bar mitzvahs, family groups, executive portraits and corporate events. He is on the Board of Directors of the Professional Photographers Society of Greater Washington DC and he teaches at the Washington School of Photography.

Adam was born to working class parents in the Dundalk area of Baltimore. He was given his first camera, a Minolta range finder, by his older brother who was serving in the U.S. Navy at the time. Adam was nine years old. He used the camera to shoot the "sights" on a cross country road trip he and his mother took to California. Then he used it all through high school to document events for the class yearbook. He was fascinated with film, with digital media, and with animation. When he graduated from high school and chose a college, it was Full Sail University in Orlando, FL, a school which specialized in his interests. He loved what he was learning there but was not able to complete the degree requirements as his mother, then a widow, became ill, and Adam had to return home to care for her. After her death, he put his artistic dreams on hold and matriculated at Excelsior College in Albany, NY where he earned a BS in Business.



© Adam Lowe

Adam then moved to the Washington, D.C. area to become a consultant for a technology firm. He helped businesses, such as law firms, identify and effectively use computer systems. He worked at this job for about 15 years. In 2011, he began a part-time photography business, casually at first, then with more interest as his client base expanded. In 2013, he left consulting to go full-time as a photographer. He earned his Certified Professional Photographer credential from PPA and attended the Washington School of Photography.

On December 27, 2005, Adam met Toby Levy. She is a Biomedical Engineer, originally from Albany, NY. They were married in 2007 and have been sharing life experiences ever since. An important one was Adam's "Aha Moment" in 2013 when he decided to leave consulting and the corporate world which he disliked, and devote himself to doing what he really enjoyed, the art of photography. He and Toby were on a kayaking trip through the Grand Canyon at the time and the serenity and splendor of the location inspired them both.

Since then, Adam has worked steadily to increase his knowledge and develop his business. The certification he obtained from the Professional Photographers Association was a major step. This is awarded only after the applicant passes stringent tests on all technical and creative aspects of photography and goes through an exhaustive peer review of his portfolio. Adam is now working on PPA's Master's Degree program. He has been named Best Event Photographer by the Best of *Bethesda Magazine*, a recommendation for 2015 and recently, for 2016. He was also named Best Portrait Photographer in Rockville for 2015.

Adam's equipment kit is quite extensive, although he prefers to carry as little gear with him as possible. He primarily shoots with a Nikon D800 and uses three different lenses, depending on the assignment. They are a 24-70, a 70-200, and a 14-24. He regularly uses a tripod but can hand hold the 70-200 lens, even in low-light conditions, with reasonably good results. He usually carries two cameras and wears them on a Spider holster around his waist like a "gunslinger." He post-processes in Lightroom and Photoshop but has found it more economical to outsource his printing, due to the variety of products that he sells. Of the different commercial printers he has used, he currently favors Pilot Imaging in Rockville, both for quality of finished product and for excellent customer service.

Adam credits Roy Sewall with convincing him to join the NBCC. The Lowes are kayakers and, according to Adam, every kayaker he has ever met has a copy of Roy's book, *Our Potomac*, on his coffee table. When Adam finally did talk with Roy, he was led to the NBCC website. Roy stressed the excellent organization of Club activities and the high quality of images submitted in competitions. Adam put his name on the waiting list in 2011. It has taken four years for him to be invited for membership.

So far, Adam has not submitted any photos in the monthly competitions. He is awed by some of the work by competitors that he has seen so far. He looks forward to stretching his abilities with the assignments and to producing artwork worthy of awards.

– Jean Hanson

Educational Workshops Offered

During the next few months, Alan Sislen will be conducting three educational workshops that may be of special interest to NBCC members and the waiting list:

January 9th, 2016: **"Lightroom Importing and Develop"** This workshop is primarily intended for current LR users who would like an in-depth refresher of the Library module and the Develop module and who feel that they are just not taking advantage of the full image editing capabilities of this software. They may be relatively comfortable with early versions of LR but not up-to-speed with the significant enhancements introduced in LR4, LR5 and LR6. New LR users who are highly computer literate and already comfortable with the basics of Adobe Camera Raw (ACR) and would like to begin making the transition to LR may also find this workshop valuable, although my "Lightroom Intensive" workshop would be more appropriate for a comprehensive understanding of all of LR's capabilities. Details are at <http://alansislenphotography.com/lrimportdevelopjan2016.pdf>. Special pricing for NBCC members is \$189 (\$229 regular price).



January 22rd, 23rd, 24th: **"Lightroom Intensive"** If you want to really learn Lightroom (LR), this is the workshop for you! LR has gained rapid acceptance by millions of photographers because it provides the ultimate in organization, efficiency and improved image processing. You will gain hands-on experience with the entire LR program. Throughout the workshop, you will receive instruction and then guidance as you work on your own images, from importing, image processing, outputting to slideshows, web galleries or prints, books, and exporting images for email, distribution or any other purposes. If you're new to LR, you will leave the workshop with a full understanding and practical experience using this extremely powerful, but user-friendly software. If you've been using LR, but not taking full advantage of all of its power, you will gain a greater in-depth knowledge of LR and learn many of the short-cuts and tricks that will enable you to become a power-user of this amazing program. This is a small (maximum 6 people), hands-on workshop. Details are at <http://www.alansislenphotography.com/lrintensivejan2015.pdf>. Special pricing for NBCC members is \$349 (\$395 regular price).

April 16th: **"Panoramas – From Shooting to Processing"** Panoramas require a different way of seeing, a different approach to composition, specific shooting and camera setup techniques and software knowledge to "stitch" together the multiple images that will ultimately make up your composite photograph. This workshop will begin with a presentation in my studio that will discuss those special considerations that result in eye-catching panos.

We'll then go shooting at a nearby location to practice what we've learned and to receive one-on-one help. We'll make a stop for lunch and then return to the studio to learn the best practices of pano stitching and processing. We will be learning how to "stitch" panoramas in both Lightroom and Photoshop. Details are at <http://alansislenphotography.com/panosapr2016.pdf>. Special pricing for NBCC members is \$139 (\$179 regular price).

To check availability or for questions, email Alan at Alan@AlanSislenPhotography.com.

Call for Entries: CityScapes

An Exhibit by Members of the North Bethesda Camera Club

March 8 - April 2, 2016
Waverly Street Gallery
4600 East West Highway, Bethesda, MD

NBCC wants your work for a group show at The Waverly Gallery, March 8- April 2, 2016. The show is titled "CityScapes" and will feature approximately 40 images from NBCC photographers. All aspects of city life are welcome, including architecture, people, transportation, the art/theater scene, outdoor cafes, extreme wealth, poverty, recreation/sports, etc. Photographs may have been taken anywhere in the world, but must relate to some aspect of city life. For example, a close up of a flower or animal would probably not be appropriate even if it was taken in Central Park, unless there was something to link it to a city (such as a skyline behind the flower).

There are no restrictions on when a photograph was made, but it must have been photographed by the person under whose name it is submitted. Outside printing, matting, and framing are permitted. Each photographer may submit up to 3 jpegs, but a maximum of 2 images per photographer may be selected for the exhibit. Image selection for the show will be made by an independent juror, and all decisions are final.

Please size the image submissions as follows:

Image format: electronic file in JPG format

Image dimensions: width 1920 pixels or less, height 1200 pixels or less

Image resolution: 72 dpi

File size: unlimited

Name your images as follows:

last_name_first_name_title_approximate framed dimensions

Send submissions as attachments to a single email, to exhibits@nbccmd.org. In the subject line of the email, please put "CityScapes."

Timeline

December 11, 2015 - January 10, 2016: Call for Entries (**deadline: midnight, January 10**)

February 5, 2016: Results sent to entrants

March 5, 5:00 - 7:00pm: Framed work to be delivered to Waverly Gallery

March 8: show opens to public

March 11, 6-9pm: opening reception at Waverly Gallery

April 2: show closes and work is to be picked up between 6:00-8:00pm

All accepted work is to be framed by the photographer, using black frames with hanging wire on the back. No clips or hanging bars are permitted. Please label work with artist name, title, medium and price. Waverly Gallery will charge 30% commission, so factor that into your sales price. If your image is selected, but you can't deliver or pick up your photo on the specified date, you may make arrangements for someone else to do that for you.

Please email me if you have questions (sarahsally@verizon.net). I look forward to seeing your images!

– Sarah Salomon, Exhibits Chair

Birds in flight: A planning study

I was intrigued by the Nature Visions lecture on "Birds in Flight." The very idea of using a bird's need to land into the wind is just too cool. So, I started looking at which of my cameras would do the job best. Obviously, depth of field is an issue here. Autofocus is a must, and it must operate well in low light. My camera bodies all suffer noise at ISO 1600, which is where I will end up by evening's close. Because the light levels fall off dramatically after sunset, I want to be able to set an auto-ISO maximum of 1600. This will allow me to set shutter and aperture in manual mode, giving over light control to the camera body. I just want to work focus and image capture and leave the ISO management to the camera. I also want to make sure autofocus is triggered by the shutter release and not by the back button. The V3 camera body offers both, but to capture landing birds, I want simplicity of operation.

In my mind, the bird is approaching my position, and I am in some kind of blind. The wind, as well as the sun hopefully is at my back. That much I pretty much know, but the rest is a little fuzzy, so I sit down and begin the following analysis.

What size bird? Let's take an adult Sandhill Crane. This creature has a 5 foot wing span, and I wouldn't expect to be much closer than 70 or so feet from the thing and would probably be a good bit further out, so to fill the frame allowing space on either side of the bird, what equipment do I need? I go back to the depth of field problem. I need a large field because the bird is moving toward me at say 20 mph, so my margin of error needs to be as large as I can get. The best camera that I own to maximize depth of field is absolutely my Nikon 1. It has a one inch sensor, and the smaller the sensor, the better the bet in a situation like this.

Now, adding a foot on either side of the wing, gives me a horizontal dimension of 7 feet. Ok, I can get this at 70 feet with a 100mm (270mm 35mm eqv.) lens on the Nikon 1 camera body. I can use my Nikon 70-300mm lens to pick 100mm off the barrel.

Now, for light. I want to be in position 30 minutes before sunset, so I am talking EV 14 or so. I end the evening at a light intensity of EV 8 some 12 minutes after sunset depending on my latitude.

I want my 100mm lens to have two characteristics: an aperture of f/2.8 would be great, but I don't have one, and I also need a superb autofocus, which I have on that body. With the lens wide open, my ISO needs be no higher than 1600 after sunset on a clear evening, and I can shoot at 1/500 second, dropping down to 1/250 if I need to. If the bird gets closer than 70 feet, I have that extra bit of space on either side to play with if I need it.

Now what about that depth of field? If I use the Nikon 1 V3 with the 70-300mm lens set to 100mm, I can get a depth of field of 32 feet. Cropping down that image would give me enough pixels for an 11x14 print at 200dpi without the need to use the image expansion software of Lightroom or Photoshop. The only thing I know I will need is a decent noise software for the ISO 1600 frames. Noise reducing software I have. The best I have seen is the Prime noise reduction software found in DXO Optics Pro 10, but Lightroom has software for this, as does Topaz De-Noise. I think I am covered.

As I said, I don't expect to see these birds at 75 feet, so I worked up some numbers for birds landing 200 feet out. Setting the focal length to 200mm (540mm eqv) on the 70-300mm lens barrel, and the shutter speed to 1/250th, and the aperture wide open at f/5.6, it's most open, I can expect to make a photograph up to 10 minutes after sunset before exceeding the ISO 1600 hard stop. My field depth is 38 feet. I can use the tracking autofocus feature of the camera body, and shoot 10 frames per second. The body will autofocus between exposures, keeping the bird in good focus as the shutter remains pressed if all goes well. At these settings, I can expect enough pixels to print an 11x14 using 200 ppi without using the image expansion capability of Lightroom. If the light slips past EV 9, I can underexpose my frames by up to 1 stop without much difficulty giving another 5 minutes or so if the bird action is hot and heavy.

As I sit in my blind firing away during that hour of magical shooting, Manual mode, 1/500th or 1/250th, f/5.6, the light will quickly fade from the sky, and the Auto-ISO setup will carry me well into that fading light finally failing me when the ISO 1600 hard stop is hit. In my mind's eye, I will pack up my 2 pound body and lens, grab the tripod, turn on my flashlight maybe, go back to the car, and happily call it a day.

– Steve Robinson

December Competition Results (Leaves)

Judge: Carla Steckley

PRINTS

Intermediate (12 entries)

1st	Lorraine Chickering	A Wet Little Wisp
2nd	Beth Altman	Leaf
3rd	Toni Robinson	Vinca on Coral Bells
HM	Mike Fleming	Autumn Colors

Advanced (34 entries)

1st	Greg Holden	Hosta
2nd	Dick Pelroy	Delaware Water Gap, PA
3rd	Bill Seelig	Cabbage
HM	Chuck Bress	C. Leaves
HM	Stan Collyer	Leaves of Grass
HM	Cheryl Naulty	On the Rocks
HM	John Norvell	Fall Colors in Fog
HM	Dick Pelroy	Dolly Sods, WV
HM	Jim Turner	Alligator Fern
HM	Jim Turner	Golden Leaf
HM	Carol Walsh	Floating Leaves



© Lorraine Chickering

ELECTRONIC IMAGES

Novice (12 entries)

1st	Lorraine Chickering	Oh The Webs We Weave
2nd	Ellen McGovern	Amazonian Leaf
3rd	Jason Wolf	Up Up and Away
HM	Jill Randell	Lovely Lily Leaf

Intermediate (18 entries)

1st	Ken Goldman	After the Rain
2nd	Claudia Seelig	Floating Leaves
3rd	Steven Silverman	Orange Leaves
HM	Ira Adler	Kenilworth Aquatic Garden
HM	Kay Norvell	Maine Morning
HM	Steven Silverman	Vines in Color

Advanced (37 entries)

1st	Stan Collyer	Aspen Leaves
2nd	Melissa Clark	Lotus Silhouette
3rd	Nancy Wolejsza	Palm Design
HM	Melissa Clark	In the Vineyard
HM	Morris Liss	Triple Treat
HM	Cheryl Naulty	Swirling Leaves
HM	John Norvell	First Frost
HM	Dick Pelroy	Canaan Valley WV
HM	Dick Pelroy	Delaware Water Gap
HM	Jean-Pierre Plé	Untitled
HM	Jim Turner	Fern Macro
HM	Jim Turner	Rock Fig Leaf



© Ken Goldman

Cumulative Competition Results through December 2015

PRINTS

Intermediate

- 28 Steve Lapidus
- 28 Eric Schweitzer
- 18 Lorraine Chickering
- 17 Kay Norvell
- 15 Louise Roy
- 12 Beth Altman
- 9 Toni Robinson
- 6 Mike Fleming
- 6 Ellie Trybuch
- 6 Ray Whitman

Advanced

- 34 Carol Walsh
- 28 Morris Liss
- 28 John Norvell
- 22 Bill Seelig
- 21 Stan Collyer
- 21 Dick Pelroy
- 21 Jim Turner
- 18 Bruce Cyr
- 16 Gail Bingham
- 15 Joanne Mars
- 12 David Davidson
- 10 Greg Holden
- 6 Willem Bier
- 6 Chuck Bress
- 6 Dave Clemmer
- 6 Lester LaForce
- 6 Cheryl Naulty

ELECTRONIC

Novice

- 28 Jill Randell
- 28 Louise Roy
- 20 Lorraine Chickering
- 19 Ellen McGovern
- 17 Philippe Pradel
- 12 Robert Barkin
- 12 Bill Bulmer
- 12 Steven Lapidus
- 8 Jason Wolf
- 6 Deborah Menditch

Intermediate

- 39 Steven Silverman
- 31 Toni Robinson
- 26 Ken Goldman
- 25 Claudia Seelig
- 20 Kay Norvell
- 9 Bob White
- 6 Jean Hanson
- 6 Neil Hermansdorfer
- 6 Lauren Ludi

Advanced

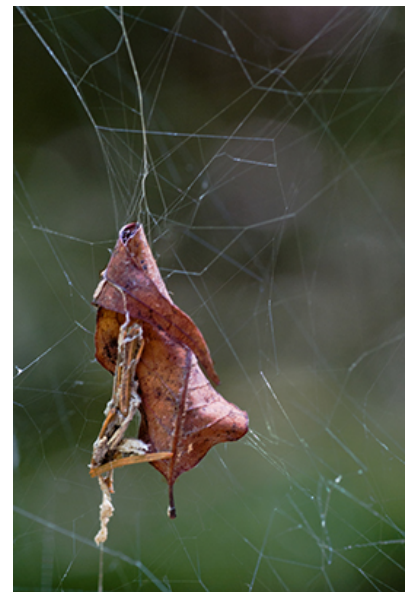
- 33 Dick Pelroy
- 32 Jim Turner
- 28 John Norvell
- 21 Melissa Clark
- 18 Miranda Chin
- 18 Bruce Davis
- 17 Nancy Wolejsza
- 15 Chet Stein
- 14 Cheryl Naulty
- 12 David Davidson
- 10 Stan Collyer
- 10 Bruce Cyr
- 10 Chuck Lee
- 8 Michele Egan
- 6 Gail Bingham
- 6 José Cartas
- 6 Stuart Glickman
- 6 Morris Liss
- 6 Jean-Pierre Plé
- 6 Jack Rosenberg
- 6 Sarah Salomon
- 6 Carol Walsh
- 6 John Willis



© Stan Collyer



© Greg Holden



© Lorraine Chickering

2015-2016 NBCC Board of Directors, Standing, and Special Committees

<u>President</u> <i>David Davidson</i>	<u>Vice President</u> <i>Roy Sewall</i>	<u>Secretary</u> <i>Bruce Davis</i>	<u>Treasurer</u> <i>Toni Robinson</i>	<u>Directors</u> <i>Carol Lee</i> <i>Joel Hoffman</i>	<i>Gordie Corbin</i> <i>Kent Mason</i> <i>Alan Sislen</i>
--	---	---	---	--	---

<u>Programs</u> <i>Paul Taylor</i> Evelyn Jacob Kent Mason John Norvell Ray Whitman Michele Egan Gail Bingham Neil Hermansdorfer	<u>Membership</u> <i>Chuck Lee</i> <u>Exhibits</u> <i>Sarah Salomon</i> Melissa Clark Sibyll Erdman Dawn Sikkema Alan Simmons John Willis <u>Webmaster</u> <i>Tom Field</i>	<u>Competition</u> <i>Judy Switt</i> <i>Prints</i> Bill Ho Bill Richards Bill Seelig <i>Electronic</i> Willem Bier Tom Field John Willis	<u>Judges</u> <i>Steve Robinson</i> Bruce Cyr Lester LaForce Kay Norvell <u>Nature Visions</u> <i>Steven Silverman</i> John Norvell Jean Pierre Plé Lori Ducharme	<u>Hospitality</u> <i>Claudia Seelig</i> Bill Seelig Geri Millman Terry Van Houten Jim Render Virginia Render Ellie Trybuch Ira Adler Mark Segal Jitesh Batra	<u>Field Trips</u> <i>Gail Bingham</i> Bruce Davis Lori Ducharme Joann Mars Larry Mars Jim Turner Dick Pelroy Steven Silverman <u>Lens & Eye</u> <i>Lori Ducharme</i>
---	--	--	--	--	---

<u>Education</u> <i>Chris Hanessian</i> Evelyn Jacob Kent Mason	Roy Sewall Alan Sislen Nikhil Bahl	<u>Community Outreach</u> <i>Joel Hoffman</i> Ron Dietrich Chris Hanessian Gordie Corbin	Bob Peavy José Cartas Judy Switt Kent Mason	<u>Photo Essay</u> <i>Stu Mathison</i> Willem Bier David Davidson	Tom Field John Pan John Willis
---	--	---	--	---	--------------------------------------

PSA Representative
Judy Burr

Awards Event Coordinator
John Villforth

Database Administrator
Ken Goldman

Voting members in bold

NBCC, founded in 1965, meets most Wednesday evenings from September to May. Competition and program meetings are held in the fellowship hall of the Faith United Methodist Church, 6810 Montrose Ave., Rockville, MD. Membership meetings are open and guests are always welcome.

Membership in NBCC is capped at 165 members and we currently have a waiting list. For more information about the club and for an application, visit the Membership section of the club website at www.nbccmd.org

