

The Lens and Eye



Volume 52 Number 5 | January 2017 | Editor: Lori Ducharme | Contact: newsletter@nbccmd.org | www.nbccmd.org

Calendar

January Events

- Jan 4** - Competition, 7:30pm. Theme: Circle/Oval. Judge: Susan Milestone
- Jan 11** - Program night, 7:30pm. Fred Zafran, "Giving Voice to the Photograph"
- Jan 18** - Board meeting
- Jan 25** - Program night, 7:30pm. Annual Member Expo

February Preview

- Feb 1** - Competition (electronic)
- Feb 8** - Competition (prints)
- Feb 15** - Board Meeting
- Feb 22** - Program
- Feb 23** - Field Trip (Baltimore)

January Competition Theme: Circle/Oval

See the membership book for complete description. Must have been taken on or after June 1, 2015.

Electronic images are due by 7:30pm on Sunday, January 1.



HAPPY NEW YEAR 2017!

January 4 Judge: Susan Milestone

For our first competition of 2017, NBCC is happy to welcome back Susan Milestone. Susan is a professional nature and fine art photographer and workshop instructor, conducting workshops with Tony Sweet throughout the continental US, Canada, and Iceland. Her work has been published in magazines, books, calendars, cards and posters. She is a fine art digital print maker, and her prints are exhibited and sold throughout the country.

You can view Susan's website at <http://www.susanpmilestone.com>, and her pro gallery on the Singh-Ray Filters website at http://www.singh-ray.com/pro_gallery_template/susan-milestone. To learn more about upcoming workshops with Tony Sweet Photography, visit <http://tonysweet.com/workshops/location-workshops/>.



© Susan Milestone

January 11 Program: "Giving Voice to the Photograph"

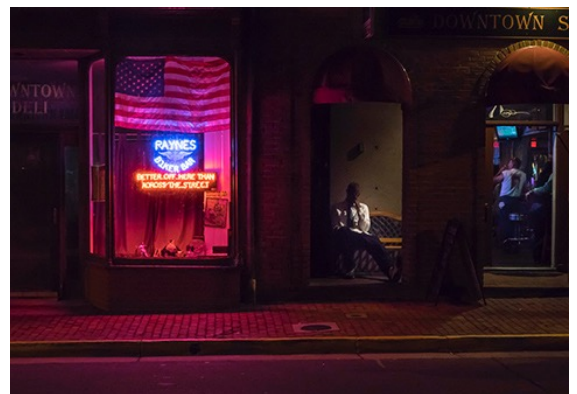
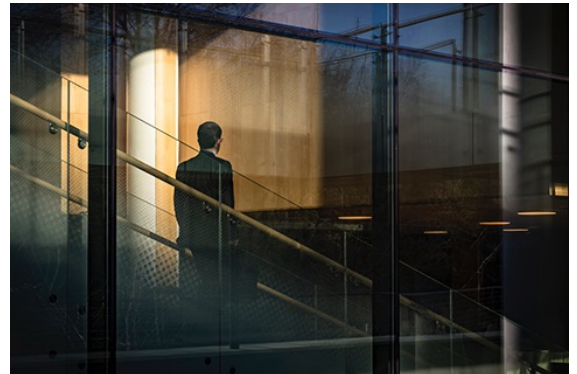
Fred Zafran is a documentary photographer of "everyday life." He wanders the streets looking for extraordinary light that "textures the darkness" and which reveals small stories to be told. Fred studied with Alex Webb and Sam Abell and follows the approach of finding the setting first and then remaining open to the possible. Fred suggests "let the light lead you to the right circumstances, compose, wait, and most often the subject will find you."

On January 11th Fred Zafran will share his thoughts on his own work, and his efforts to "give voice" to his photographs... to make images that are powerful, emotionally resonant, and expressive.

Fred Zafran's haunting and emotionally powerful photographs depict streetscapes, cityscapes and people in cities and towns throughout the US and abroad. Fred offers that "compelling images ask questions, communicate metaphorically and on multiple levels, and don't readily yield up their answers." By these criteria Fred's photographs are extremely successful. Go to Fred's web site and see for yourself

(www.fredzafranphotography.com) because his photographs convey more clearly their quiet strength than any description can begin to do.

Fred Zafran has been photographing for over 40 years, first with film and then digital capture. He is a juried member of the Torpedo Factory Art Center and a member of Multiple Exposures Gallery, in Alexandria, VA.



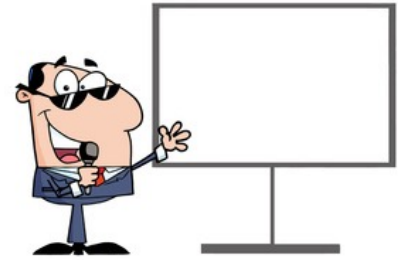
images © Fred Zafran

— Evelyn Jacob

January 25 Program: Member Expo

You're invited to participate in the January 25, 2017, Member Expo Program.

The 2016-7 Member Expo will continue the successful format used in previous years. The program is an informal and non-competitive showcase of members' images. Participants get to display up to 12 of their own chosen images (no restrictions). The audience will get to learn more about fellow members and their interests, while picking up creative ideas and gaining inspiration.



The evening will proceed like this: up to 12 images from one member will be projected on the big screen for 10 seconds each. During this showing, the member may give us short comments on each image or on the collection overall. At the end of the set, there will be time to ask short question and/or offer more details about specific images just shown. Then we move on to the next member's set of images. At the break and after the program, audience members may engage the presenters one-on-one to share ideas and ask questions.

Prepare to be surprised at the quality, depth and breadth of your fellow members' work. Undoubtedly we'll learn things from each other: places to go, techniques to explore, new avenues to creativity, etc. We encourage NBCC members to take advantage of this opportunity by participating in and/or attending this program. Please do not submit images unless you will be at the program to discuss your image set. Participants are strongly encouraged (but not required) to show their current work for maximum audience enjoyment.

Submit your images in a process similar to Electronic Image Competition: JPG files with maximum dimensions 1920 pixels (width) and 1200 pixels (height). Detailed submission guidelines can be found at: <http://www.nbccmd.org/docs/EICsubmissionguidelines.pdf>)

However, Member Expo uses a different filename convention: YourName-SequenceNumber.jpg. Use a leading zero for sequence numbers 01 - 09 so your images are displayed in the order you set. Example filenames: TomSullivan-03.jpg; RoyRogers-11.jpg.

Submit up to 12 of your photographs, but attach no more than three image files to each email. Send them to workshop@nbccmd.org. (If you tried to attach all 12 files to a single, enormous email, delivery would likely fail – perhaps without notice).

The opening date for submitting images is Thursday, January 5th. The closing date is Wednesday, January 18th, midnight. Please send all of the emails at the same time (not hours apart) and only submit them once. Receipt of your emails will be acknowledged by our server's automatic responder, followed within a day or so by a personal e-mail from a Member Expo program staffer confirming your participation in the program. You are responsible for timely follow up if you do not receive this participation confirmation email.

Submissions will be accepted into the Expo in the order received, until we reach the limit for the evening, so enter early!

If you have questions please contact Tom Sullivan at sullynbcc@yahoo.com.

— Tom Sullivan

New Year's Resolution: A Photo a Day!

365 photographs a year. Why?

This is a time of the year when we reflect on what we've accomplished over the past year and start making resolutions for the coming year. What might that mean in terms of photography?



For me, reflecting back is an easy proposition: I just turn to my daily photo blog and, for any given date, I'm taken back to what I was doing that day or even how I felt: the big (and little) celebrations of life; interesting events I attended or people I met; scenes from my travels or simply from my neighborhood walks. Yes, there are also some entries that strictly moan about the bad weather we had on that day (too hot in the summer; too cold in the winter!) but overall, it's a pretty fair account of my life.

A while back, I started my 365 project on a platform called 'Blipfoto' (www.blipfoto.com). A friend of mine had been posting there for a while and I saw his daily entries via Facebook. It seemed a cool idea at the time. And six years later (yes, six!), I'm still posting almost daily.

Why, you ask? At the time, I had just started dabbling into photography. But really, most of the time, my camera just sat on a shelf gathering dust. Having to post a picture every day would force me to get acquainted with my equipment fast. And so it did. I now never leave home without a camera (even when it's only my cell phone). And I can safely say that my photographic skills increased dramatically: something about practice making perfect?

What also happened, and relatively quickly, is that I learned to "see" all over again. It's easy enough to take a slew of images when you're in a visually stimulating environment (exotic vacations, field trips, festivals, etc). It takes a bit more doing when you're trying to capture an image as you commute the same old road into work and come back after dark. Pretty soon, my friends and family members became 'spotters' for me too: "Hey, look at this, wouldn't that make for a great blip?" (A blip is what our daily entries are called.) The mundane became something that could make for a pretty image.

Last, but not least, is the community of people who participate in these projects. You not only post your own image, but you comment on other people's images too. And they give you feedback on yours – sort of like a competition, without the stress and disappointment. The platform in which I participate is worldwide and I have friends across the globe – some of whom I've met in person in the course of travel. There's nothing like having a 'local' show you around their corner of the world, with both of you carrying cameras. There's an immediate bond between people who share a passion.

So find yourself a platform and start posting. In my opinion, blipfoto.com is the best: it's elegant, it's easy to use, it's community-owned and driven. Check out my own journal (www.blipfoto.com/Alsacienne) and if you join, let me know, so that I can follow you!

— Michele Egan

February 23 Field Trip: Peabody Library & Baltimore Basilica

Our February field trip will be to the George Peabody Library and the Baltimore Basilica, both located a few blocks apart in the historic Mount Vernon district of Baltimore. We will be allowed to use tripods in both buildings.

In the morning at 10am we will visit the Peabody Library. The library opened in 1878 as part of the Peabody Institute and is today a part of Johns Hopkins University. The library contains over 300,000 titles dating from the late 18th to early 20th centuries. The Reading Room is a vast space surrounded by ornate cast-iron balconies. We will be permitted to go up on these balconies surrounding the stacks for dramatic images.

After lunch we will visit the Baltimore Basilica, formally known as the Basilica of the National Shrine of the Assumption of the Blessed Virgin Mary. Begun in 1806, the church was the first metropolitan cathedral built in America. Its designers were John Carroll, cousin of Charles Carroll who was a signer of the Declaration of Independence, and Benjamin Henry Latrobe, Thomas Jefferson's architect of the Capitol. The Basilica's large dome and columns were inspired by the Capitol. In 2006 the Basilica underwent an entire renovation which included opening to the public the elaborate brick catacombs under the church. We will photograph in the brilliant white sanctuary as well as the catacombs. For those who are interested there will also be a harp concert in the Basilica from 1 to 2pm (no photos during the performance please).

Weather permitting, there may also be some good shots outdoors. In addition to being the location of the first Washington Monument (erected in 1815), the Mount Vernon area is rich in 19th century architecture, from restored townhomes built in the mid-1800's to many cultural and religious institutions that have been preserved in their original grandeur.



Peabody Library, © Gail Bingham



Baltimore Basilica Crypt, © Jim Turner

— Jim Turner

NBCC Exhibition Dates Changed

Thank you to everyone who submitted to our upcoming exhibition "Water, Water Anywhere." Susan Milestone was our juror, and she had a difficult time choosing 40 finalists from among the terrific images sent in from our club.

There has been a change of date and venue for the show. Due to a scheduling conflict, the exhibition space that was set up for this January is no longer available. The exhibit will now take place at the Oasis Gallery in Montgomery Mall, July 13-September 10, 2017. The opening reception will be **Saturday, July 22, 2-4pm**. This is a nice exhibition space, and I hope everyone will be able to join us at the reception.

— Sarah Salomon

Save the Date: April Field Trip

NBCC is planning a field trip to Shenk's Ferry Wildflower Preserve (sometimes also known as Holtville Flower Preserve) near Holtville, PA on Friday, April 21. In Ian Plant's book, *50 Amazing Things You Must See and Do in the Greater DC Area*, he writes, "the preserve contains one of the best wildflower displays in the Mid-Atlantic area.... Toward the end of April, the preserve comes alive with erect white trilliums and wild blue phlox along with a host of other species." Here's a link to the preserve: <http://www.lancasterconservancy.org/shenks-ferry-wildflower-preserve-walk/>

Please note the preserve is not a formal garden, rather it is a forested area and participants will be walking on easy dirt trails along Grubb Run; sturdy shoes recommended. There is no fee to enter the preserve.

It is about a 2.5 hours drive from DC area to Shenk's Ferry. Trip organizer, Jean-Pierre Plé will most likely drive up that morning, leaving the DC area in time to arrive at the preserve shortly after sunrise (sunrise on April 21 will be at about 6:15 AM). Others may wish to drive up the day/evening before (directions to the preserve will be provided). Carpooling is strongly encouraged as there is limited parking at the preserve.

After shooting at Shenk's Ferry, participants may be interested in exploring other Lancaster Conservancy properties in the area (more information will be provided on these properties). In addition, the gardens at the Mt Cuba Center (<http://mtcubacenter.org/>) and Longwood Gardens (<https://longwoodgardens.org/>) are nearby. Those wishing to stay overnight either before and/or after the field trip are responsible for making their own lodging arrangements. Once JP has a list of participants, names will be shared with others so as to facilitate coordination / ride sharing.

To help participants prepare to do flower photography in the field, Evelyn Jacob has kindly agreed to offer a presentation on field flower considerations and techniques the evening of Wednesday, March 15 at her home. This presentation will be limited to 8 participants going on the field trip. More information on this presentation will be forthcoming.

While there is no limit on total number of participants for the field trip and those on the waiting list are welcome, the presentation with Evelyn will follow normal club procedures on membership benefits. If more than 8 field trip participants are interested in the presentation, a lottery or other means of random selection will be used.

If you are interested in going on this field trip, please send a note to Jean-Pierre (ple.jpp@gmail.com) by January 20.

To help with planning, please also answer the following questions in your email:

1. Member status (full/emeritus/waiting list)?
2. Will any non-member guests accompany you?
3. When do you think you will most likely drive up — April 20 (day/eve before) or April 21 (morning of)?
4. Willing to take riders in your vehicle (yes/no)? If yes, how many riders can you take?
5. Will need a ride (yes/no)?
6. After Shenks Ferry, I am also interested in visiting:
 - Other Lancaster Conservancy properties
 - Longwood Gardens
 - Mt. Cuba

PSA NEWS

PSA has developed a new Distinction for those who want a new challenge that is quite different from the International Exhibitions. The new Distinction involves developing a portfolio, which encourages PSA members to gain recognition for their work in a very different way from other distinctions.

For this new distinction, the photographer produces a body of work that shows their personal style and specific interests. This program is open to all PSA members of every PSA Division. There are three levels for this new competition so members at different levels have an opportunity to compete with photographers at similar levels. The portfolios are available for both digital and prints. The requirements for submitting are quite specific and can be found here: <https://psa-photo.org/index.php/portfolios>.



The portfolios must have a central theme, a short statement of intent and an overview image. The portfolio must be consistent, cohesive and balanced, but must have variety in each image. PSA has gone to great lengths to develop this program so that it has meaning and significance. Training was provided for those doing the assessments. Different levels require different numbers of images—more as the level becomes more advanced. This was the first year for the competition and a total of 61 Portfolios were received with 26.2% being approved for the Distinctions. The process of judging was complex and very time consuming. To help members, a new online course **Creating Portfolios for Assessment** has been developed and is designed to be completed in 2 months. The Portfolio Gallery from 2016 can be seen here: <https://psa-photo.org/index.php/portfolio-galleries>. The variety of images in all the portfolios is worth seeing.

PSA offers a variety of online courses and has recently added one titled *The Pain and Pleasure of Critical Analysis*. This sounds very worthwhile and the description here <https://psa-photo.org/index.php/education-online-courses-critical-analysis> may provide the education committee as well as club members information about what is required for a critique to be useful. PSA is more than Exhibitions as there are many opportunities for learning both from the online courses and study groups in all the Divisions.

— Judy Burr, NBCC PSA Representative

NBCC Members Do Well at Mid-Atlantic Chapter Competition

John Norvell was a big winner in the recent Chapter competition. In Nature, he won the best landscape and received one honorable mention (HM). He really led the way in Photo Travel, winning 1st, 2nd, 3rd and one HM. **Jim Turner** received 3 HMs in Color and 2 HMs in Nature. **Nancy Wolejsza** received 2 HMs in Color, 1 HM in Nature and was awarded 3rd place and one HM in Photo Journalism. **Judy Burr** received 2 HMs in Color. **Louise Roy** received an HM in Photo Travel, and **Rawligh Sybrant** received an HM in Photo Journalism. In all, NBCC members won 20 awards. Judy Burr served as one of the three judges in Photo Journalism and Photo Travel. The competition was tough and there were entries from around the Chapter. Michael Tran is the competition chair and also selects the images for the PSA Chapter Showcase. The Mid-Atlantic Chapter was the first runner-up for 2016 and a Chapter member won Best of Show. Both **Larry Mars** and Jim Turner had images in the 2016 Chapter Showcase. All the Chapter galleries can be seen here: <https://psa-photo.org/index.php/chapter-gallery>. This is a good way to see some work done by other chapters in the country.

— Judy Burr

Competition Results: December (Animals)

Judge: David Blecman

PRINTS

Intermediate (21 entries)

1st	Bill Bulmer	Osprey Mother with Chicks
2nd	Robert Barkin	Now What?
3rd	Bill Bulmer	Downy Woodpecker
HM	Robert Barkin	Black Oystercatcher
HM	Kay Norvell	Oryx Footprints
HM	G Olaizola	With a Grain of Sugar
HM	Ray Whitman	Flamingo Social

Advanced (31 entries)

1st	Carol Lee	Hungry Chicks
2nd	Jack Rosenberg	Morekam Iguana
3rd	David Terao	Gorilla
HM	Dave Clemmer	Alaska Moose
HM	Stan Collyer	I'm Watching You!
HM	Bruce Cyr	Intersecting Parabolas
HM	Bruce Cyr	Mmmm, Slimy Protein Snack
HM	Lester LaForce	Concentration
HM	Morris Liss	Equine Affection
HM	Jim Turner	Kenilworth Dragonfly

ELECTRONIC IMAGES

Novice (15 entries)

1st	Michael Blicher	Lunch Time
2nd	Jill Randell	I'm All Ears
3rd	Michael Blicher	Happy Trails
HM	Dillard Boland	Oyster Catcher with Catch
HM	Diane Poole	Ruby Love

Intermediate (30 entries)

1st	Lorraine Chickering	Fish Fight
2nd	Claudia Seelig	Peek a Boo
3rd	G Olaizola	Unruffled
HM	Ira Adler	QE Park Conservatory Vancouver
HM	Bill Bulmer	Bald Eagle
HM	Bill Bulmer	Brownheaded Nuthatch
HM	Neil Hermansdorfer	Family Time
HM	Toni Robinson	Frankenfroggy
HM	Steven Silverman	Red Panda
HM	Tammy Trocki	Oscar

Advanced (42 entries)

1st	Stan Collyer	Lunchtime
2nd	John Norvell	Waiting for Mom
3rd	Dick Pelroy	Osprey Makes a Catch
HM	José Cartas	Mommy is the Best
HM	Bruce Cyr	Give and Take 1
HM	Bruce Cyr	Give and Take 2
HM	David Davidson	Machias Island Puffin
HM	David Davidson	Red Screech Owl
HM	Art Hyder	Trumpeters on the Madison
HM	Chuck Lee	Watchful Eye
HM	Kent Mason	Fawn Friends
HM	Cheryl Naulty	Wild Horses of Corolla
HM	Chet Stein	Playtime
HM	David Terao	Frog on a Calla Lily

NBCC Competition Results

Cumulative Scores through December 2016

PRINTS

Intermediate

32 Bill Bulmer
 24 Ray Whitman
 21 Robert Barkin
 21 Kay Norvell
 16 G Olaizola
 15 Louise Roy
 14 Tammy Trocki
 12 Lorraine Chickering
 12 Neil Hermansdorfer
 10 Diane Poole
 9 Eric Schweitzer
 6 Beth Altman
 6 Debbie Menditch
 6 Toni Robinson

Advanced

31 Dick Pelroy
 30 Bill Seelig
 24 Carol Walsh
 24 Morris Liss
 22 David Terao
 18 Lester LaForce
 18 Jim Turner
 18 Stan Collyer
 16 Greg Holden
 15 Jack Rosenberg
 14 John Norvell
 12 Bruce Cyr
 10 Carol Lee
 6 Gail Bingham
 6 Joanne Mars
 6 Chet Stein
 6 Dave Clemmer

ELECTRONIC IMAGES

Novice

34 Jill Randell
 33 Steve Parker
 33 Michael Blicher
 16 Diane Poole
 8 Louise Roy
 8 Norm Zorber
 6 Chris Andreasen
 6 Dillard Boland

Intermediate

40 G Olaizola
 33 Lorraine Chickering
 28 Toni Robinson
 27 Tammy Trocki
 27 Claudia Seelig
 21 Ira Adler
 18 Neil Hermansdorfer
 12 Allen E Neyman
 10 Cherry Wyman
 6 Robert Barkin, James Corbett, Elaine Hoffman, Steven Lapidus, Bob Murphy, Kay Norvell, Steven Silverman, Bob White

Advanced

37 Ken Goldman
 33 David Terao
 29 Chet Stein
 26 Melissa Clark
 24 José Cartas, David Davidson
 20 Dick Pelroy
 18 James Chia, Bruce Cyr
 16 Stan Collyer
 15 John Norvell
 14 Mark Segal, Carol Walsh
 12 Chuck Lee, Cheryl Naulty, Nancy Wolejsza
 6 Gail Bingham, David Clemmer, Bruce Davis, Art Hyder, Kent Mason, Jean Pierre Plé, Jack Rosenberg, Sarah Salomon, Eric Schweitzer, Jim Turner, John Willis

ROLL CALL: NBCC OFFICERS, COMMITTEES AND APPOINTMENTS, 2016-'17

OFFICERS

President
Roy Sewall

Vice President
Lori Ducharme

Secretary
Bill Ho

Treasurer
Bruce Davis

DIRECTORS

Gordie Corbin
Kent Mason

David Davidson
Eric Schweitzer

Joel Hoffman

Carol Lee

STANDING COMMITTEES

Competition

Judy Switt*
Prints:
Bill Seelig
Claudia Seelig
Toni Robinson
Electronic:
Tom Field
Willem Bier
John Willis

Judges

Bruce Cyr*
Robert Barkin
Lester LaForce
Kay Norvell
Tammy Trocki

Education

Toni Robinson*
Ira Adler
Greg Holden
Evelyn Jacob
Kent Mason
Nolan Rappaport
Roy Sewall
Alan Sislen

Exhibitions

Sarah Salomon*
Melissa Clark
Sybill Erdman
Greg Holden
Dawn Sikkema
Alan Simmons
John Willis

Field Trips

Gail Bingham*
Beth Altman
Loretta Argrett
James Corbett
Bruce Davis
Joanne Mars
Larry Mars
Dick Pelroy
Jean-Pierre Plé
Jim Turner

Nature Visions

Steven Silverman*
John Norvell

Programs

José Cartas
Lorraine Chickering
Michelle Egan
Neil Hermansdorfer
Evelyn Jacob
Kent Mason
John Norvell
Ray Whitman

Membership

Chuck Lee*

SPECIAL COMMITTEES

Community Outreach

Joel Hoffman*
Kent Mason
José Cartas
Gordie Corbin
Ron Deitrich
Bob Peavy
Steve Robinson
Jack Rosenberg
Judy Switt

Equipment

Eric Schweitzer*
Tom Field
Neil Hermansdorfer
Robert Barkin

Strategic Planning

Roy Sewall*
Gail Bingham
Tom Field
Greg Holden
Toni Robinson
Jim Turner

Hospitality

Ellie Trybuch*
Ira Adler
Jitesh Batra
Geri Millman
Jim Render
Virginia Render
Bill Seelig
Claudia Seelig
Terry Van Houten
Ray Whitman

Photo Essay

Stu Mathison*
Stan Collyer
David Davidson
Tom Field
Morris Liss
John Willis

OTHER APPOINTMENTS

Asbury Liaison
John Villforth

Church Liaison
Toni Robinson

Database Administrator
Ken Goldman

Glennie Coordinator
John Willis

Lens & Eye
Lori Ducharme

PSA Representative
Judy Burr

Webmaster
Tom Field

Share & Care
Gordie Corbin