

The Lens and Eye

North Bethesda Camera Club



Volume 55 Number 5 | January 2020 | Editor: Cherry Wyman | Website: www.nbccmd.org

Calendar

Events start at 7:30 p.m. unless otherwise noted.

January Events

- Jan 1** No meeting - New Year's Day
- Jan 8** Competition: B&W Open - EIC
- Jan 15** Competition: B&W Open - Print
- Jan 21** 8:30 am Field Trip: DC Churches
- Jan 22** Board Meeting
- Jan 29** Program: 3-Member Presentation on Nonliteral Photography
- Jan 31** NBCC "Faces" Exhibit Opens

February Preview

- Feb 5** Competition: Human Relationships
- Feb 6** 7 pm Opening reception, "Faces"
- Feb 12** Program: Master Photographer
- Feb 19** Board Meeting
- Feb 26** No meeting - Ash Wednesday

January

Competition Theme: Black and White Open

An image rendered in black and white. Black-and-white infrared and moderate toning are acceptable.

(Photos must be taken on or after January 1, 2018)

Electronic images are due no later than 7:30 pm on Sunday, January 5.

As always, each member may submit no more than two entries per month.

For more winning images from the December competition, see pages 15-19.



Reflections on Acadia © Mike Mitchell

January 8 Judge: Mary Braman



Mongolia © Mary Braman

Mary Braman is a Baltimore-based photographer who shoots for sanity. Her photographic style is simple, and her post-production work is minimal – she follows the NatGeo mantra: Get it right in the camera.

Mary travels extensively and uses her photos to help her remember the thousands of wonderful things she has seen around the world. Her work has been featured at the Baltimore Museum of Industry, twice in the annual Baltimore National Heritage Area calendar, and twice at the Maryland Photography Alliance (MPA) Gallery Show exhibited at the Maryland State House of Representatives in Annapolis. She has been learning the photographic medium for more than fifteen years, and her subjects include landscapes, nature, and people.



Rwanda © Mary Braman

Mary is on the steering committee of the Creative Exposure Baltimore Meetup, serves on the executive council of the MPA, and is a graduate of the MPA's Judge Certification Program.

Contents of This Issue

2	January events	11	Call for entries, Allegany National Photo Exhibit
7	Splinters from the Board	12	Recap: NBCC Street Group at East Wing
8	Member news	13	Competition scores
9	PSA News	15	Winning competition images
10	Bird Photography at Middle Creek		

January 15 Judge: Lester Picker



Watching the Babies
© Lester Picker

Lester Picker (www.lesterpickerphoto.com) has more than 650 writing and photo credits in major national magazines and newspapers including National Geographic Society publications, Better Homes & Gardens, Forbes, Time, Inc. publications, Money, Fortune Small Business, Bloomberg Personal Finance, and National Parks Magazine. He is a former reporter, photojournalist and editor. For three years, Les was a columnist for Oceans Magazine and for four years was editor-in-chief of a national environmental magazine. He was a weekly syndicated columnist and features travel writer and photographer for The Baltimore Sun. Les was a regular commentator on National Public Radio's Marketplace, carried on 260 stations nationwide.

Les leads photography workshops and tours throughout the world. His landscape and wildlife images decorate upscale homes, offices and institutions throughout North America. He was recently selected as the exclusive artist for a major teaching hospital, where more than 60 of his large- format images are permanently displayed.

He won the prestigious Canada Northern Lights award for Best Travel Photography, a juried competition run by the University of Missouri School of Journalism. He is a Moab Fine Art Master Photographer and an X-Rite Coloratti. His studio is supported by Moab and X-Rite.

Les has an earned doctorate in ecology from the University of Maine.



Root and Rocks © Lester Picker

January 21 Field Trip to DC Churches



*Church of the Ascension
and St. Agnes*

There are still slots available for the January 21 field trip to two beautiful, historic churches: Christ Episcopal Church in Georgetown and St. Agnes and Ascension Church on Massachusetts Avenue downtown. We have special access including permission to use tripods in the interiors.

We will go by rented van from Cynthia Keith's house in Bethesda, departing at 8:30 am and returning at 1:00 pm. The van will take us from location to location and back to Cynthia's house. The cost per person is \$35.

This field trip is limited to 12 people. NBCC members have priority, but others are welcome to get on a waiting list. Those interested should email Cynthia at clkeith@comcast.net.

- Tammy Trocki, Programs Chair

January 29: 3-Member Program on Nonliteral Photography



Photo © Toni Robinson

Get ready to be inspired and stimulated by three NBCC photographers who will share their approaches to nonliteral photography, which involves the creation of images that are different from what one would see with the naked eye.

Toni Robinson will discuss her "Blended Realities," the term she coined to describe the composite images she is creating that attempt to communicate the sense of a place as she experienced it. Toni reports that the journey she is on - which is most definitely in its very early stage and full of bumps, twists and turns - has been intimidating, challenging and above all, fulfilling. Choosing to create this type of nonliteral art has provided Toni

with a very different paradigm to inform what and how she captures when she is out shooting.

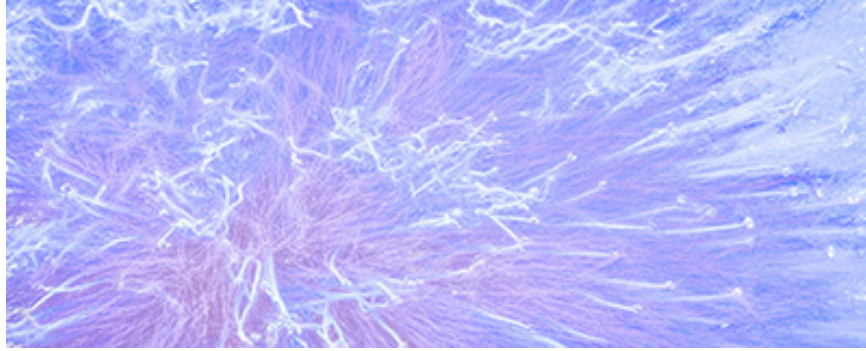


Photo © Gail Bingham

Gail Bingham will present "Beyond the Literal: Expressing More of Yourself in Your Photos." Gail states that "We all have something to say, although it can take time and reflection to hear yourself." Gail will share what motivated her to create a photo book this year called "Solace," along with the poems and images in the book. She also will describe how the project evolved over time and some of the techniques she used.

Jean-Pierre Plé will share various in-camera techniques (19 techniques organized into 8 clusters) that he has used to create images that he felt as much as he saw in his mind's eye. These techniques, tailored for use with DSLR or mirrorless cameras, or with an iPhone, lend themselves to creating images that convey transcendence. To put these techniques into context, he will begin his presentation with a brief discussion, drawing on ideas from Minor White, about how the meaning of a photograph lies in a series of spectra between the poles of objectivity (i.e., record of reality) and subjectivity (i.e., non-literal/metaphor).

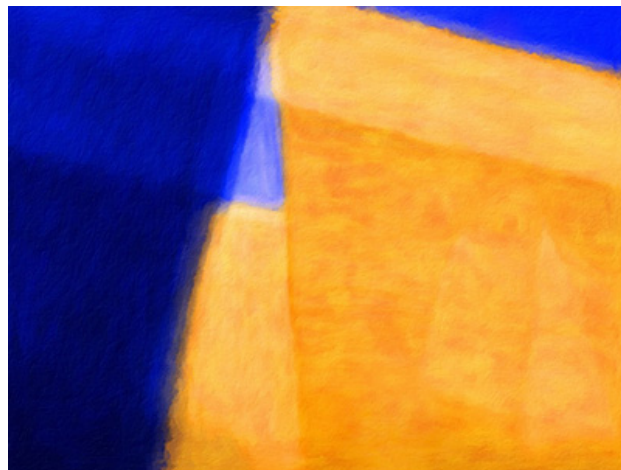


Photo © Jean-Pierre Plé

- Evelyn Jacob, Programs Committee

January 31 - March 23: NBCC “Faces” Exhibit

The photographic work of our NBCC membership will be exhibited in a group show from Friday, January 31 to Monday, March 23, 2020 at The Gaithersburg Arts Barn, 311 Kent Square Road, Gaithersburg, MD 20878. There will be an **opening reception Thursday, February 6 from 7:00 to 8:30 pm**. Our judge, Jill Bochicchio, is scheduled to be present and is anticipated to make a few remarks.

“Faces” will feature 30 images in an exhibit that will showcase the broad range of emotions that can be conveyed by facial expressions. A mischievous grin, a tearful eye, a raised eyebrow: these are a few of the ways that feelings can be conveyed. Images may be of human or animal faces. There will be an emphasis on cultural diversity and inclusion.

Thirty images from 20 photographers (plus 5 alternates) were selected by our judge from 86 entries by 33 photographers.

The exhibit schedule:

January 8 or 15: Framed work can be dropped off at a club competition meeting

January 22: Framed work by board members can be dropped off at the board meeting

January 25 - 30: Framed work not yet dropped off is to be delivered to the home of Cherry Wyman.

Friday, January 31: The exhibit opens to the public

Thursday, February 6 from 7:00 to 8:30 pm: Opening reception at Gaithersburg Arts Barn Gallery, 311 Kent Square Road, Gaithersburg, MD

Monday, March 23: The show closes, after which the work will be available for pick-up at club meetings or at the home of Lester LaForce.

As always, exhibit images are to be framed with quality black metal or wood frames (no clips or hangers) with white or off-white mats (no cream-colored mats). There must be a tight hanging wire fastened to the back and positioned 1/3 from the top (compatible with the gallery's cable and hook hanging system). Minimum image size is 8x10" (or 10x8") and minimum frame size is 11x14"/14x11". Maximum frame size is 26x32"/32x26". Quality frameless presentations (*i.e.*, metal prints or canvas stretched edge-to-edge mounting) will be accepted (11x14"/14x11" minimum size) -- maximum frameless is 26x32"/32x26".

Frameless presentations must include a hanging device that is compatible with the gallery's cable and hook hanging system.

All work must include a label affixed to the back which details your name and the title, medium and price of your print. The Art Barn's gallery will charge 30% commission -- which should be factored into your sales price. If you can't deliver or pick up your photo on the specified date, you may make arrangements for someone else to do that for you. Drop-off and pickup for exhibit entries will also be possible at club competition meetings -- hand off to Lester or Cherry.

- Lester LaForce, Exhibits Chair

Splinters from the Board

Hopefully, all of you have had a healthy and peaceful holiday season. As we start the second half of our program year, I'd like to tell you about some things the board has been addressing for the last few months.

One of the issues we've identified is the decrease in print competition submissions. When we changed the number of submissions from four to two, we were not sure how that would play out in the overall submission pattern. One result, we believe, is that there are fewer prints being submitted. Of course, it may be due to other circumstances. To help us understand the underlying causes, and therefore better inform what we do, there will be a survey distributed in a month or so. Hopefully, we will get meaningful input from that exercise.

We also have decided to change the end-of-year event to be more accessible. We will have the event at our normal meeting place, and it will be on June 3rd. Most likely, we will have a nominal contribution and buy the meal from one of the local casual restaurants. We'll need a small committee to help with the planning and logistics; Stephanie Banks is already our first volunteer for the committee, but we'll need a few more folks to assist with the event. Just shoot me an email and I'll collect the names.

We have made some progress on our website effort. At this time, we have reviewed almost a dozen camera club websites and talked with either the developer or the club representative. We are now comparing three different platforms to see how well each of them might address the functionality we want to ensure is part of our new system. Stay tuned!

Lastly, please ... if you know of anyone who is ill or injured or has someone in their life pass away ... let me know. Pauline Jaffe has graciously agreed to be our Share and Care rep again this year.

As always, if you have any suggestions or concerns, don't hesitate to pass them along!

All the best –

- Toni Robinson, President

Member News



Beth Altman has had two images accepted into the Maryland Federation of Art's Light and Shadow exhibit, online at the Curve Gallery until January 30. Her "Day at the Museum" is shown above; Beth's "Adams Morgan" is also included. (mdfedart.com/portfolio/light-and-shadow-2/)

Tom Marchessault has two images, "Bulkely Bridge-Connecticut" and "North End and Tobin Bridge - Massachusetts," on exhibit at the Crystal City Fotowalk Underground - Road Trip, through March. (exposeddc.com/crystal-city-fotowalk-exhibitions)

Al Neyman's photo, "5000 Years Home," will be displayed at the Strathmore Mansion Music Center as part of their annual "Home" competition from January 11 - February 23. The photo depicts Scara Brae, a neolithic archeological site, against the background of an 18th-century manor house in Orkney, Scotland. (strathmore.org/visual-arts/exhibitions/home)

Cherry Wyman's photo of the National Zoo's Asian elephant Spike appears on the inside cover of the 2020 Calendar of the Friends of the National Zoo.



NEWS

The November issue of the PSA Journal has an article by John Barclay titled, "Photograph What Makes Your Heart Sing." In it, the author gives good advice such as, "focus on experiences, not gear;" "understand your craft;" and "worry less about what others are doing and more about your vision." He even mentions his friend, Cole Thompson, who was a speaker at the PSA conference this year and explains that Cole does not look at others' photographs. It is too easy to try to make images like those you have seen rather than finding your own vision. Another article discusses the "dos and don'ts" of back-road photography. It is important to not trespass or block driveways. In the excitement of seeing a great scene, it is easy to forget basic courtesies. Photos from Image of the Year Competitions in the various divisions are included in this issue. The competitions include medal winners in all PSA exhibitions, so having an image award is quite an accomplishment. There are some images from the PSA International Exhibition. Part two of "Drone Photography" is also in the November issue.

The December issue of the PSA Journal introduces the Photo Festival that will be held in Colorado Springs from September 29 through October 3, 2020. It will be quite different from the conferences in the past. Another program that PSA is sponsoring is PSA Adventure Tours - available only to PSA members. Local PSA members Dick Sprott, APSA and Henry Ng, FPSA, EPSA are both members of the committee. They will be available on a trip to the Outer Banks in April. There is a selection of images from both the Chapters Showcase and Councils Challenge. There is also a review of the PSA Conference in Spokane. NBCC member **Larry Mars** is listed in the new ROPA Distinctions, since he received the EPSA distinction several months ago.

PSA offers webinars as well as online classes, mentors and species ID. There are study groups in every division and I have found them to be worthwhile overall. It depends on the group members and commentator, if there is one. I have learned from group members and improved my images as a result of suggestions. The last page of the PSA Journal always has a pictorial image of the month and this is an opportunity for all PSA members to receive recognition. The administrator of my Digital Dialog group was featured in November. I encourage all PSA members to take advantage of some of the many opportunities that are available.

- Judy Burr, PSA Representative

Bird Photography at Middle Creek Wildlife Management Area



This year, an organized field trip to Middle Creek Wildlife Management Area primarily to photograph birds will not be offered. However, here are the details in case anyone is interested in going to Middle Creek on their own.

Where:

The Middle Creek Wildlife Management Area, located in Lancaster and Lebanon counties, is managed by the Pennsylvania Game Commission, and usually hosts more than 100,000 snow geese, 10,000 tundra swans, and 10,000 Canada geese that have stopped at Middle Creek while pushing north to their breeding grounds (there were over 200,000 snow geese in February 2018).

When:

The period that will see the maximum number of birds is difficult to predict because it is largely a function of winter weather, but generally the window of opportunity begins around mid-February and can last from a few days to a couple weeks. The visitor center at the refuge is closed until February 1; after that date the center puts out each Friday morning estimates of the number of birds at the refuge. After February 1, you can get the weekly birds estimate report at:

<https://www.pgc.pa.gov/InformationResources/AboutUs/ContactInformation/Southeast/MiddleCreekWildlifeManagementArea/Pages/MigrationUpdate.aspx>

Keep in mind....

- It is about a 2:45 hour drive to the refuge.
- To improve odds of getting a good spot you should arrive around 5:30 am.
- Anticipate cold temps : dress warmly (head to toe) and think especially about having a glove system that allows you to operate your camera, a way to keep batteries warm, and what to do to counter the formation of condensation on your lenses and cameras when returning to your car after shooting.

Gear Considerations

Photographers should have a lens with an effective focal length of 300mm-600mm – either directly with a single lens or by using a telephoto lens coupled with a 1.4x or 2x tele-converter.

Directions and Where to Park:

For driving directions, the refuge recommends you put this address in your navigation device (which is the street address for the Middle Creek Visitors Center): 100 Museum Road, Stevens PA 17578.

Assuming you are arriving from the south entrance, after you pass the visitor center (which will be on the left), go 0.8 miles to the parking area entrance for the Willow Point Trail (which will be on your right). The sign for Willow Point Trail parking lot is small, brown, and at ground level - the sign is easy to miss. The path from the parking lot to the point is paved asphalt and takes about 5 minutes to walk. (See the attachment named Willow Creek Wildlife Management Area. Willow Point Trail is number 5 on the map.) The lot holds about 80 cars. If filled, you can park along the road.

Breakfast

There is a great place for breakfast about 10 minutes away:
Brickerville House Family Restaurant
2 E. 28th Division Highway, Lititz, PA (717-625-2525)

Middle Creek Wildlife Management Area Website

<https://www.pgc.pa.gov/InformationResources/AboutUs/ContactInformation/Southeast/MiddleCreekWildlifeManagementArea/Documents/Middle%20Creek%20Wildlife%20Management%20Area%20Map.pdf>

If you have any questions, contact Jean-Pierre Plé at ple.jpp@gmail.com

- *Jean-Pierre Plé, Field Trips Committee*

Annual Allegany Photo Competition Call for Entries

Martin Heavner, who has judged some of our competitions, encourages NBCC members to enter the annual Allegany National Photography Competition and Exhibition, to be held April 4 - May 2, 2020 in Cumberland, Maryland. The categories are color; monochrome/ black and white; and mixed media: photography as sculpture. Sponsored by the Allegany Arts Council, offers \$5,000 in cash prizes, including \$1,500 for Best of Show. **The deadline for entries is Monday, February 10.** Apply through CaFE: <https://tinyurl.com/cafephtoentry>

For more information, contact the Allegany Arts Council at (301) 777-2787 or email arts@alleganyarts.org.

Recap: NBCC Street Photography Group at the East Wing

A chilly November 16 meant twelve field trippers and their leader, Essdras Suarez, did “street photography” in the East Wing of the National Gallery instead of on the National Mall. No matter. Essdras taught us valuable lessons in seeing and photographing how people interact with each other and their environment. We experimented with silhouetting, reflections, dramatic lighting, anticipated shots, isolating forms, photographing folks we didn’t know, and creating effects in the twinkly-lit walkway between buildings. You can see some of the fruits of our labor in our field trip online gallery, created by Gail Bingham: <https://nbccphotosharing.weebly.com/east-wing-street-photography.html>

Essdras also gave a well-received NBCC presentation on street photography in May 2019. His work can be seen at <http://essdras.com/>.

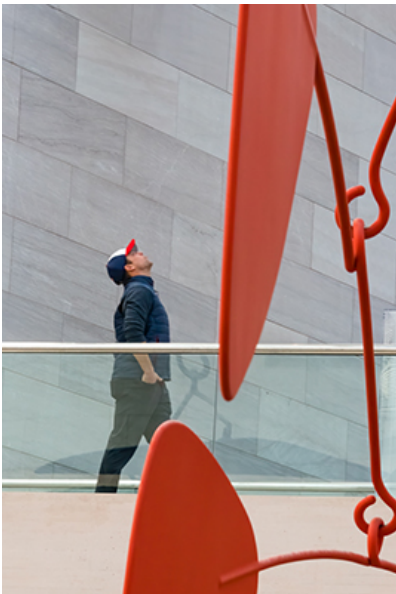
- Tammy Trocki, Field Trips Chair



© Tammy Trocki



© David Terao



© Rich Chitty



Disco at the National Gallery of Art
© Jack Rosenberg

Competition Results: December (Nature)

Print Judge: Dick Sprott

EIC Judge: Wayne Wolfersberger

PRINTS

Intermediate (10 entries)

1st	Kay Norvell	Dry River
2nd	Peter Dunner	Lunch Time
3rd	Steve Lapidus	Stalagmites & Stalactites

Advanced (20 entries)

1st	Joanne Mars	Dancing Egrets
2nd	Lester LaForce	Spade Foot
3rd	Joanne Mars	Barred Owl
HM	Lester LaForce	Resplendent Quetzal
HM	Dick Pelroy	Hyena Pack Devours Elephant
HM	Larry Mars	Arctic Lake
HM	Nikos Zacharakis	Lake Shore - Lake Tahoe

ELECTRONIC IMAGES

Novice (15 entries)

1st	Don Picard	Hummingbird Family
2nd	Don Tobin	Gloucester After Nor'easter
3rd	Rose Yee	Shadow
HM	Don Picard	The Narrows
HM	Rose Yee	Yellow Leg

Intermediate (45 entries)

1st	Mike Mitchell	Reflections on Acadia
2nd	Shelley Price	Don't Blink
3rd	Shelley Price	Wild Pony
HM	Isaac Afrangui	Acadia Coastline
HM	Beth Altman	Leaf
HM	Dillard Boland	Uyuni Salt Flats at Dusk
HM	Lorraine Chickering	Cathedral Rocks
HM	Steven Frahm	Bugling Elk in Rut
HM	Max Kantzer	Baraka Silverback Gorilla
HM	Mark Leatherman	Pied Herons
HM	Bob Mazziotta	Monument Valley at Sunset
HM	Mike Mitchell	Mist on Beaver Dam Pond
HM	Kathryn Mohrman	Horned Dragon
HM	Kathryn Mohrman	Roseate Spoonbill at Rest
HM	Audrey Rothstein	Breathe

Advanced (33 entries)

1st	Chet Stein	Green Cay Breakfast
2nd	James Chia	Gilkey Overlook
3rd	John Willis	Yin and Yang Bird Fight
HM	Robert Barkin	Olympic Sunset
HM	James Chia	Snake Glacier
HM	James Corbett	Sunset Perch
HM	Cheryl Naulty	Solitary Bloom
HM	Guillermo Olaizola	Great Blue Heron 15
HM	Mark Segal	Alignment
HM	Mark Segal	Snow in the Mountains
HM	Steven Silverman	The Three Brothers

NBCC Competition Results
Cumulative Scores Through December 2019

PRINTS

Intermediate

- 29 Kay Norvell
- 28 Steve Lapidus
- 23 Debbie Menditch
- 9 Peter Dunner, David Sternbach

Advanced

- 48 Nikos Zacharakis
- 28 Joanne Mars
- 21 Bruce Cyr
- 20 Dick Pelroy
- 16 Tammy Trocki
- 15 Lester LaForce
- 8 Bill Seelig
- 6 Larry Mars

ELECTRONIC IMAGES

Novice

- 33 Don Picard
- 32 Christina Papakonstantinou
- 19 Steven Frahm
- 14 Rose Yee
- 9 Judy Ackerman, Don Tobin
- 8 Louise Roy
- 6 Riko Saidel, Jean Solari

Intermediate

- 37 Kathryn Mohrman
- 27 Karen Finkelman
- 23 Steve Parker
- 22 Mike Mitchell
- 18 John Allender, Dillard Boland
- 17 Shelley Price
- 16 Bob Mazziotta, Peter Winik
- 12 Beth Altman, Steven Frahm, Max Kantzer, Mark Leatherman, Audrey Rothstein
- 10 Claudia Seelig
- 6 Isaac Afrangui, Michael Blicher, Lorraine Chickering, Rich Chitty, Peter Dunner, Tom Marchessault, Jill Randell, Bob White, Cherry Wyman

Advanced

- 37 Guillermo Olaizola
- 36 Steven Silverman
- 27 James Corbett
- 24 Robert Barkin
- 21 James Chia
- 20 Jose Cartas
- 18 Mark Segal
- 15 Gail Bingham
- 14 Melissa Clark, John Willis
- 12 Eric Schweitzer
- 10 Chet Stein, David Terao
- 6 Willem Bier, Bruce Davis, Dick Knapp, Cheryl Naulty, Pat Joseph, Toni Robinson, Nancy Wolejsza

Intermediate Print Winners

December (Nature) Competition



1st Place
Dry River
© **Kay Norvell**

I took this photo at Zabriskie Point while on a photo tour of Death Valley, California with Denise Ippolito. The tour took place last January during the government shutdown. Many of the side roads and parking lots in the park were closed. We had a limited number of places to photograph, so we came to Zabriskie Point several times. We still found there was a wealth of things to photograph in this area.



2nd Place
Lunch Time
© **Peter Dunner**

This was one of those unexpected moments when I was at a park photographing my grandsons and a cooperative squirrel appeared. I wish I could talk about technique but as they say, I'd rather be lucky than smart. Right time, right place!



3rd Place
Stalagmites & Stalactites
Steve Lapidus

The image was captured in the Postojna Caves in Slovenia, 3 miles underground. The caves are 15.1 miles deep, about 10 times the size of Luray Caverns. Stalagmites and stalactites are created over thousands of years from dripping mineral deposits that solidify on the ground or have dripped from the ceilings, respectively. The image was captured on my Olympus OMD EM-1 Mark II and processed in Lightroom, without the aid of Plugins. Colors are natural as seen and not created in post-processing. Due to the extreme darkness in the cave, augmented by strategically placed lighting, I had to use a tripod and a relatively long 2.5 second exposure. I chose an ISO of 64 to try and capture as much detail without adding noise to the image.

Advanced Print Winners December (Nature) Competition



1st Place
Dancing Egrets
© **Joanne Mars**

This image was taken at the Alligator Farm in St Augustine, Florida in March of this year. This park is best known to photographers for the roosting bird population of several species in the winter months. I was concentrating on getting birds in flight and caught these two egrets protecting their nests. The photo was taken late morning on a cloudless day; thus I was able to get a handheld sharp image at 1/1000th of a sec at 200mm with an ISO of 200. By using the burst mode, I was able to catch the best moment of interaction.



2nd Place
Spade Foot
© **Lester LaForce**

Eastern Spade Foot was taken at Costa Rica's Frogs Heaven (a photography tour operator/frog wrangler) with a 100mm f3.5 macro lens and post processing with Helicon Focus (for focus stacking) plus final processing in Perfectly Clear Lightroom plugin.



3rd Place
Barred Owl
© **Joanne Mars**

The barred owl is a species commonly found in the Lowcountry of South Carolina, where I was given the opportunity to take several images of various rescued owls. I particularly liked this barred owl because of its beautiful textured feathers, expressive eyes and character. The eyes are very dark, but by getting the reflection of the blue sky, they brightened up nicely. This was taken with a 200mm with an ISO of 1250 to get a shutter speed of 1/250th sec. so as not to need a tripod. The setup was in a dimly lit area to provide even lighting. The f-stop was 6.3, which helped blur out the background.

Novice EIC Winners December (Nature) Competition



1st Place
Hummingbird Family
© **Don Picard**

This picture was taken in Loreto, Mexico, which is on the Baja Peninsula. We had been told there were hummingbird nests on top of cactuses in the area and found this one very close to where we were staying. I took pictures of the mother hummingbird sitting on her nest and then a couple of days later we saw two babies. I was able to get a few pictures of the babies poking their heads out of the nest, and when the mom returned, she perched on the edge of the nest with her newborn chicks.



2nd Place
Gloucester After Nor'easter
© **Don Tobin**

I took this photograph along Atlantic Road in Gloucester, Massachusetts in early October 2019, the morning after a Nor'easter. I was able to take it handheld by bracing myself against some rocks. I took a lot of images, but selected this one because it seemed to best capture the power of the waves.



3rd Place
Shadow
© **Rose Yee**

It was a beautiful sunny morning at the Great Falls Overlook on the Maryland side. There were several blue herons flying among the rocks below us. I took this photo handheld with a Nikon D500 and Sigma 150-600mm lens. In Lightroom, I converted the photo to black and white, cropped it, and slightly increased the exposure.

Intermediate EIC Winners

December (Nature) Competition



1st Place
Reflections on Acadia
© **Mike Mitchell**

This image was taken October 16 of this year in Acadia National Park at 8:35 am. I developed the image in Lightroom, using my standard post-processing workflow technique. I did not employ any additional complex editing methods. The site in the park was one of the stops on the John Barclay-led workshop in Acadia in which I was participating. My goal in the image was the capture of the marsh grasses and the lily pads in sharp focus with the autumn colors of the trees on the ridge behind the marsh reflected in the water of the marsh.



2nd Place
Don't Blink
© **Shelley Price**

Charles Darwin described Galapagos marine iguanas as "imps of darkness," but I found them fascinating and quite appealing in a charmingly goofy way. I was tracking an impending collision between a Sally Lightfoot crab and an iguana, but at the moment of intersection, the iguana blinked, and they went on their separate ways - two ships passing in the mid-morning light. Galapagos, April 2018.



3rd Place
Wild Pony
© **Shelley Price**

Wild ponies were grazing on the dunes on the Maryland side of Assateague Island as the morning mist was starting to burn off. This colt was the youngest in the group and still nursing. The adults moved to the other side of the dunes and I was able to catch the pony as he took off to catch up with his mother. June 2019

Advanced EIC Winners

December (Nature) Competition



1st Place
Green Cay Breakfast
© **Chet Stein**

The dead tree in the Green Cay Refuge, which is in Boynton Beach, Florida, is a favorite place for the hawks to perch and is an easy image to take. I usually walk in that direction first when I enter the park in hopes of getting an image of an anhinga flipping a fish. As I approached, the red-shouldered hawk flew off and I ignored it, since I was focusing on the anhinga that was in the water below the tree. All of a sudden, the hawk came back up with the "cooperative" snake who chose to "pose" nicely as well. The anhinga wasn't as cooperative.

2nd Place
Gilkey Overlook
© **James Chia**

This shot was taken in the remote mountains near Juneau, Alaska. It was a late afternoon before sunset and I was in awe of the grand and magnificent view of the wide landscape overlooking the Gilkey Glacier 3,000 ft down stretching from right to left melting to the lake. It made sense to shoot a pano to take in the entire 180-degree scene, so with the tripod down low I vertically shot 12 frames with a wide angle to exaggerate the foreground leading lines and to experiment changing the exposure in between shots in order to keep the highlights of the bright sunlight and sky in check. It worked well in post processing.



3rd Place
Yin and Yang Bird Fight
© **John Willis**



I came upon a snowy egret and tri-colored heron contesting for dominance at Cunningham Lake near Sarasota, Florida. The fight went on for nearly 15 minutes. I chose a particular image which in black and white seemed to emphasize the circular nature of the struggle between the two birds.