

The Lens and Eye



Volume 48 Number 9 | May 2013 | Editor: Lori Ducharme | Contact: newsletter@nbccmd.org | www.nbccmd.org

Calendar

MAY EVENTS

- 1 Competition Night - Electronic (Open).
Judge: Don Johnson. Hospitality: Raymond & Silvie Ao, Louise Roy
- 8 Competition Night - Prints (Open).
Judge: Susan Bloom. Hospitality: Jean Hanson, Gene Haddon
- 15 Board Meeting, 7:30pm
- 22 Program Night, 7:30pm. Speaker: Alan Sislen, Landscape Photography
Hospitality Volunteers Needed
- 29 NO MEETING

JUNE PREVIEW

- 5 Year-End Awards Dinner, 7:00pm
- 15 Membership renewals due

May Competition Topic: Open

Any image taken on or after June 1, 2011. Reminder: Electronic (May 1) and Print (May 8) Competitions are held on two separate nights.

Electronic image submissions are due by 7:30pm on Sunday, April 28.

In This Issue

What month is it?! While the calendar appears to say May, spring warmth seems slow in arriving this year. Here's hoping your photography is heating up quicker than the weather.

Our last full month of the Club year has a wide assortment of activities for you – including 2 competition nights, a terrific program night, a field trip featuring hot-air balloons, and much more. They're all detailed here, along with our regularly recurring columns. As you read these articles, please take note of all the members who work so hard to plan and organize these events, and regularly contribute to the *Lens & Eye*.

The top 2 things on your "To Do" list this month should include mailing the two forms that appear at the end of this issue. The first is to hold your reservation for the **Year-End Awards Dinner on June 5**. The second is to **renew your membership dues** – this form is due by June 15 or your spot will be given to someone on the waiting list. Don't wait – do it today!

Our Club activities will soon wind down for the summer. As is traditional, there will be only one newsletter issue for the summer, to be published on or about July 30. We anticipate having some extra space in that issue, so if you have an idea for an article, send it along! Likewise, we're looking for your suggestions for new columns or feature articles for next year. You can reach us at newsletter@nbccmd.org.

– Lori Ducharme, Editor

May 1 Competition Judge: Don Johnson

Don Johnson has been a serious amateur photographer since the early 1980s. He is a past President of the Gaithersburg Camera Club and a former President of the Frederick (Maryland) Camera Clique. In addition to maintaining an active membership in these two clubs, he is also a current member of the Friends of the National Zoo (FONZ) Photography Club, and has spoken at most of the photo clubs in the DC area.

Don's images have been featured in numerous publications, including Popular Photography, The AOPA Pilot magazine, and Ballooning: The Journal of the Ballooning Federation of America. He also had three images published in the fall 2006 issue of Nature's Best magazine, one of which appeared on the cover of the issue. Another photograph in the issue was selected as the top "Zoo and Aquarium" photograph of the year. He has also been published in Zoogoer, a publication for the Friends of the National Zoo (FONZ). He has appeared a number of times in Photoshop Elements Techniques magazine, a publication devoted to educating users of this excellent computer software program, which is his primary digital editing software.

Don is currently using a Nikon D300 digital camera. He loves to travel and always takes his camera when he goes someplace new for either business or pleasure. Don especially enjoys photographing zoo animals, flowers, sunsets/sunrises, famous places, and producing photo abstracts using the computer. He says that photography is a life long hobby that he plans on enjoying until he can no longer push the shutter release button.

You can view Don's photography at www.sunspotimages.com.



© Don Johnson

May 8 Competition Judge: Susan Ruddick Bloom

Sue Bloom came to photography in the 1980s from a drawing and painting background. She holds a BFA and an MFA from Maryland Institute College of Art. Sue was a proud owner of the first Mac in 1984 and has been creating digital art since the beginning of that medium. She is a professor at McDaniel College in Westminster, MD. She teaches photo workshops throughout the US and conducts photo trips abroad. Sue's background in alternative darkroom processes lead to experimentation in her digital work. Her work in expanding creative, fine art photographic possibilities has led to three books on her techniques: *Digital Collage and Painting* (Focal Press, 2006), *Digital Painting in Photoshop* (Focal Press 2009), and *Digital Collage and Painting 2nd Edition* (Focal Press 2010). She also writes for some photo magazines: *Shutterbug*, *After Capture*, and as a staff writer for the Australian magazine *Better Photoshop Techniques*. Her work is collected broadly and featured in several photo books. She recently had a show of infrared photography that traveled throughout the US for almost two years.

Sue's workshops are high energy and full of creative possibilities. Her knowledge of both traditional darkroom methods and cutting edge digital software, materials, and techniques make her unusually qualified to deliver an abundance of content to her students. Students say she is patient, her pace is wonderful, and the instruction is inspirational.

Her work may be seen at www.suebloom.com.



© Sue Bloom

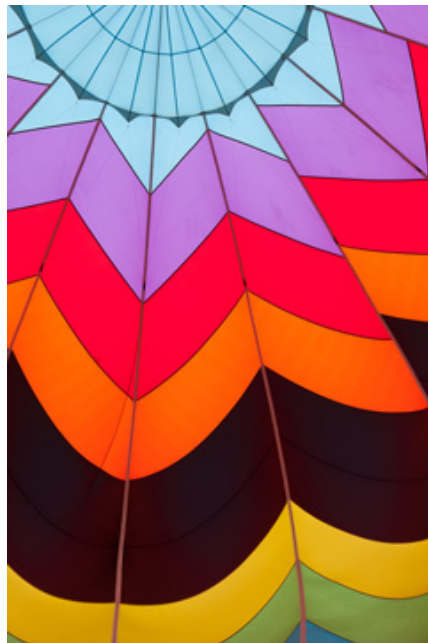
May 16 Field Trip: Balloon Glow at the Preakness

– Text and Photos by Steven Silverman

Every year as part of the festivities the Preakness horse race hosts a hot air balloon festival. The festival offers many great photographic opportunities including several mass ascensions and two evenings of “balloon glow.” Balloon glow was invented in Albuquerque in 1979, when local pilots inflated balloons on Christmas Eve night as a thank you to local residents. The sight of balloons lit from within at night like giant holiday ornaments is breathtaking, and glow events are now held all over the world.

For this balloon glow the pilots fire their burners while the balloons are tethered to the ground just after sundown. The warm light from the flames causes the colored balloons to glow brightly against the night sky.

On **Thursday, May 16th** the festival hours are from 4:00PM to 9:00PM. It is best to arrive by 5:30 to enjoy the craft and food vendors as well as great daylight photography. In the past I have captured images of the balloons being prepared and filled, abstract and pattern images of the brightly colored fabrics, and close ups of the intricate basket weave of the gondolas. At 6:30 PM there will be a mass ascension where several balloons will take off at once. The highlight of



the evening, the balloon glow, begins about 8:30 and only lasts about 20-30 minutes. I must stress that all events are weather permitting. In the event of winds in excess of 15 mph the balloons will not launch.

Due to the low light and often longer exposures I have always used a tripod while shooting the glow. I recommend you read two articles with techniques and recommendations for balloon glow photography: one from [Apogee Photo](#), and another from [ePhotozine](#).

You are encouraged to read more about the event at <http://www.ballooningusa.com/preakness/>.

IMPORTANT NOTICE ABOUT PARKING:

For the afternoon/evening activities from 4:00-9:00pm, the public is asked to park at the satellite parking site located at the Howard County Fair Grounds, 2210 Fairground Road, West Friendship, MD. A fee of \$5.00 per car load will be asked for parking. (Vehicle access into Turf Valley will be by parking pass and handicapped designated only.) Shuttle buses will be available starting at 3:30pm and will run throughout the evening. The last shuttle bus will depart Turf Valley at 10:30PM on Thursday and Friday.

We can meet as a group at 5PM at the Howard County Fairgrounds near the shuttle bus pick-up in order to arrive at the event grounds by 5:30. HOPE TO SEE YOU THERE!



May 22 Program Night: The Beauty of Landscape Photography

There's a lot more to creating beauty in landscape photography than being in a beautiful landscape. In our May 22 program, **Alan Sislen** will discuss why, after over 40 years doing photography, he has gravitated to and specializes in landscape photography. He also will explain the equipment he uses and, more importantly, what he looks for in a particular location to try to capture that elusive "great photograph."



Burnside Bridge at Dawn, © Alan Sislen

Pre-planning is always a major part of landscape photography. Alan will discuss all the variables that should be considered and, then, how to deal with the unpredicted events that always occur. He also will share his thoughts about what a landscape photograph is and how we can expand the possibilities of what we look for ourselves.

For a landscape photographer, more important than the scene that is being photographed is the light on the scene being photographed. Alan will use many examples throughout his presentation to demonstrate this critical element. He also will share with us insights about ways of approaching the particular circumstances of landscape photography, and how that affects equipment choice, composition,

aspect ratio, and other techniques as well as mood and emotion, all of which can help make an ordinary photograph, extraordinary.

Alan is passionate about photography – not just the finished photograph, but also the process of visualizing and capturing each elusive image, processing the image and then creating the print. He says, "The process is not complete until the viewer is moved or intrigued by what they see, regardless of whether their reaction is exactly the same as what motivated me to press the shutter release."

Alan's greatest influences have been those with whom he has studied, including well-knowns British landscape photographer Charlie Waite, former National Geographic photographer Bruce Dale, digital expert Thom Hogan, and fine art Photoshop masters Eliot Cohen, Charlie Cramer, and John Paul Caponigro. His work is in numerous personal and corporate collections, as well as in the private collection of the Embassy of Chile in Washington DC. His photographs can be seen on the web at <http://www.alansislenphotography.com>, at Multiple Exposures Gallery in the Torpedo Factory Art Center in Alexandria, Virginia, and at his personal studio/gallery in Bethesda, Maryland.

– Gail Bingham, Program Committee



Vineyard at Sunrise, © Alan Sislen

Member Profile: Deeva Garel



Deeva Garel's interest in photography as an avocation began when she retired, in 2006, from her 36 year long career working as a teacher, then a curriculum specialist and finally as Assistant Chief Information Officer for the Montgomery County Public Schools. Prior to this, Deeva, who is a Washington, D.C. native, had earned a Bachelor's degree in Business Education from Boston University in 1970. Then, while employed full time, she earned her Masters in the same field from the University of Maryland, in 1973. After her retirement, Deeva worked briefly as a project manager for Naviance, a college and career readiness program for secondary school students. Currently she volunteers as a commuter instructor at Community Vision in Silver Spring. She has also begun traveling extensively, camera in hand, to document her finds, and to attend photography classes and seminars.

Her most recent trip was to Baja (California) to photograph whales.

She traveled first class with Lindblad tours through National Geographic. The services of a professional photographer were included. Deeva took 1200 captures during the one week session and was disappointed with how few achieved the results she wanted. She was somewhat relieved to learn from the photo guide that her success ratio was about average for a nature photographer in the wild. She also discovered that whales are people friendly and that baby grays like to be petted. And, she used her new Olympus Micro 4/3 mirrorless camera for the first time, enjoyed its lightness and convenience, and expects to be able to make 12 X 18" prints from her captures.

Deeva has traveled to Alaska with National Geographic and has toured South Africa with Zeghram Tours. She and her sister, Sue, also an avid photographer, did a walking tour of Puglia, attended a workshop with Jay Dickman in the Aeolian Islands and "shot" their way through Rome, India, Bhutan, Zambia, Namibia, Botswana, Antarctica, and some of the American parks. In her travels, Deeva met a member of the NIH Camera Club who apprised her of the multiple benefits of camera club membership. Deeva researched clubs in our area and decided on NBCC. She immediately added her name to the waiting list and was accepted for membership in 2008.

Although Deeva has been a member for 5 years, she rarely competes and has yet to enter one of her images for a group show. She does, however, make photo books of her travels on Blurb. These she shares with family and friends. Her goals include making the "holy grail" of images, photographs which are

technically perfect and which reflect her own personal point of view or perspective on a subject and somehow manage to also convey the iconic importance of the photographic moment. To this end, she finds the judges comments on Club competitions useful and also praises the workshops of Kent Mason, Alan Sislen, and Nikhil Bahl and the photo critique led by Roy Sewall.

Deeva is also a family person. She was married to Bob Garel, her first husband in 1971. They have two sons, Jason, who lives in Wheaton and works in information technology and Michael, who is a park ranger at the Natural Bridges National Monument in Utah. She has one grandchild. Deeva met her second husband, Michael Dole at a speed dating event. Michael has recently retired and occasionally accompanies Deeva on her photo trips.

As an active member of the Field Trips Committee, Deeva will have attended the Sylvan Heights Bird Park trip by the time this interview is published. For this, she plans to carry a tripod, her Canon and Olympus cameras, and her macro, wide angle and telephoto lenses. She will post-process in Lightroom and hopes to have an image to submit to an NBCC competition. Perhaps the weekend will become another step in her quest for photographic excellence.

— Jean Hanson

Splinters from the Board

Kent Mason and NBCC received a letter of appreciation from the principal of Rockville High School regarding members' donation of about 30 cameras and other equipment, which has enabled the school's Photography Program to be maintained and grow. It was noted that in addition to donations of film cameras, donations of point-and-shoot cameras gave special education students a feeling of success and a sense of independence.

Treasurer Bill Olson reported that the Club was projected to be on track to finish the fiscal year with a minimal deficit that would be covered from the Reserve Fund. In proposing the Club budget for FY 2014, the treasurer noted that after the dues had been set for the current year, the church raised the rent for our meeting space (such an expense is 40% of our budget), and the Board voted to provide honorariums to guest judges and presenters. As a result of those two actions, it has been necessary over the year to withdraw \$1,500 from the Reserve Fund. Consequently, to maintain the level of club activity for the coming year, it was proposed that the dues be raised to \$60. To replenish the Reserve Fund (which will be further depleted by approximately \$5,000 by the purchase of a new projector and screen) and sustain its value going forward, the Board voted to add an additional \$5 to the dues rate to be allocated to the Reserve Fund, bringing the total basic **dues amount to \$65 for fiscal year 2014.**

Members will continue to receive their monthly newsletter free electronically. For those electing to receive a hard copy through the U.S. Mail, the supplemental charge for a hard copy subscription will be increased to \$35 to cover the increased costs of printing and postage.

The Membership Application for Program Year 2013-2014 was approved with the new dues rates and is included in this issue of *The Lens and Eye*. To retain an active position in the Club, completed applications and checks from current members will need to be received by **June 15, 2013.**

The Board approved the immediate purchase of a new higher-resolution projector, lens, and case to replace the eight-year old current projector, which will be kept as a backup. In addition, the Board authorized the purchase of a new wider screen to accommodate the capabilities of the new projector. This purchase would be contingent on the church granting its permission to replace the existing screen.

Planning for the **Awards Event on June 5th** at Asbury Village in Gaithersburg is full swing. The meal cost will be **\$36 per person**, with balance of the restaurant charge of nearly \$40 being subsidized by the Club considering that the event is a scheduled meeting.

Proposed competition assignments for Program Year 2014-2015 were discussed and will be further developed by the Competition Assignment Committee for presentation and Board approval in May.

The Nominating Committee has prepared a slate of officers for next Program Year, with elections set for the **May 8th meeting.** The nomination slate appears immediately below this article.

The Long Range Planning Committee will be meeting on April 22, and will present its recommendations at the May Board meeting.

– Carol Lee, NBCC President

NOTICE

The 2013 Nominations Committee – Tom Field, Bob Dargel, and Cynthia Keith – have nominated the following slate of officers for the 2013-2014 Club year:

President: Carol Lee

Vice President: David Davidson

Treasurer: Bill Olson

Secretary: Bruce Cyr

Elections will be held at the May 8 Club meeting.

NBCC Budget for 2013-2014	
Financial Reserve	\$7,875
Revenue	
Dues	9,815
L&E Mailing	385
Education Workshops	300
Annual Picnic	225
Awards Banquet	3,500
Total Revenue	\$14,225
Reserve + Revenue	\$22,100
Expenses	
Meeting Hall Rent	4,080
Liability Insurance	300
Speaker Honoraria	1,400
Awards Banquet	4,200
Handbook/Name Tags	320
Education	1,000
Lens & Eye Printing	450
Photo Essay	300
Hospitality	250
Outreach (PCS & RHS)	600
NBCC Exhibits	200
Gifts	50
PSA Dues (pd FY 2013)	0
Web Hosting (pd FY '12)	0
Annual Picnic	225
Equipment/Repair	5,450
Treasurer Expenses	40
Supplies/Other	25
Total Expenses	\$18,890
Year-End Financial Reserve	\$3,210

Year-End Awards Event: June 5

Make plans to attend the 48th annual NBCC Awards Event on Wednesday, June 5, starting at 7:00pm.

The event will once again be held at the Rosborough Community Room in the Asbury Methodist Village, 409 Russell Avenue, Gaithersburg.

The Awards Event is always a wonderful evening. Hors d'oeuvres will be served beginning at 7:00pm, with time to meet and mingle with fellow Club members and their guests in a comfortable social setting. A buffet-style dinner will be served at 7:30pm.

Immediately after dinner, we adjourn to the nearby auditorium for the main event. Top points-earners in each of the competition categories are recognized, and Star Award points are announced. Our year-end judge will have reviewed all of the competition winners throughout the year, and from these will select the "Top Ten" prints and electronic images, with the judge's top choice receiving special "image of the year" honors in each medium. For this one occasion, images by novice and advanced photographers are judged together. Novice entries routinely appear in the Top Ten, and sometimes even garner top honors. The highlight of the evening is always the show of all of the winning images, assembled in a presentation similar to a photo essay.

In addition to the award formalities, there are almost always a few surprises. If you've never attended the year-end event, we strongly encourage you to join us this year. You will find a reservation form near the end of this newsletter. **Reserve your spot by May 24.** ❖



Rue de Buci café, © Lori Ducharme



PSA News

The PSA Annual Conference will be held in Portland, Maine from September 15-21. Registration is now open; the Individual PSA member fee for the conference is \$175 before June 30. The price increases after that and for onsite registration. The non-member fee is \$220 for the entire conference. Other fees (for partial attendance or guest members from the same household) are available on the registration form on the PSA website

www.psa-photo.org [registration page](#). You can view videos of past conferences at [this link](#). Although speakers have not been announced yet, I do know that Brenda Tharp will be making at least one presentation. Tours available during the PSA Conference are described in detail in this month's **PSA Journal**. It looks as if there will be plenty of photo opportunities with or without tours.

For most of the PSA Exhibitions, entrants receive a printed catalog or a DVD with the winning images. Results of exhibitions are posted on the Internet usually showing just the award winners. Total results can be downloaded, but show just basic information like country, entrants' names and titles. The 1st Greek Circuit was held recently and the winners are shown in a running essay with music. This exhibition had 13,070 entries from 72 countries in 4 categories—open color, photo travel, nature and experimental. You may want to look at the results at: <http://greekcircuit.com/presentations>. Here you will see some fabulous nature shots, very creative images and other award winning photographs. Serbia holds quite a few exhibitions and show their results very differently. You will have to click on each category and advance through each section; you will see many images in different categories at [this link](#). Bavaria held its first International Exhibition this year too and you can see Medal winners and some Honorable Mentions at <http://www.bavarian-international-circuit.com/galleries/>. Each Exhibition sets its categories, but all must meet PSA definitions. With the Internet, the world of photography has grown smaller as we can more easily see photographs from all over the world.

The April issue of the **PSA Journal** has a variety of reviews including Topaz B&W effects v.2.0 (free upgrades for those who have previous versions), books on Lightroom, Blending Modes, Painting with Light, B&W Conversions (who knew there were so many methods?), Tips for iPhone Photography, the Canon 5D Mark III and Nikon D800/800e. Articles of interest include *An African Photo Safari*, *The Era of the Space Shuttle*, and *The American Goldfinch*. In the News section, you will find information of photo essays in the Projected Image Divisions and photo travel essays in the Photo Travel Division. The essay competitions are open only to Individual PSA members and are similar to the NBCC essays except there are specific rules for each.

The NECCC conference has been announced in club meetings and in this column. There is another worthy conference in June. It is presented by the Berks Photographic Society in Kutztown, PA from June 7-9 and features Michael Moats and Adam Jones among others. Details are here: <http://www.berkscamera.org/events/annual-photographic-conference/>.



– Judy Burr, NBCC PSA Representative

Tech Corner: Backing Up My Digital Photographs

– by David Davidson

Being an avid photographer in the digital age results in a large number of digital images. Between my wife and me, we have many thousands of digital photographs. The entire collection is slightly less than one terabyte (1000 gigabytes) of digital images. Those images are extremely important to me. I'd be very unhappy if they were to be lost. Hard drives do not last forever, and you never know when one is going to die, so, backing up the image collection is critical. In this article I will describe my technique for backing up my collection of digital images. I'm not trying to suggest my way is better than any other way, I'm just sharing my technique in the hope it might help someone else who is concerned with backing up their collection of digital images.

All of my digital images are stored on a network drive. A network drive is connected to the router, not to any computer directly. I've chosen to use a network drive rather than a hard drive connected to a single computer in order to make those images easier to share across multiple computers. My primary computer is in my home office. This is where I do all of my digital image processing. My wife's computer is in the kitchen. This is where my wife wanted her computer to be located for purposes of convenience. We also own two laptop computers and a tablet and there are times when we need access to our photographic collection from one of those devices. Also, oftentimes my wife needs access to my images and I often need access to her images. I have found the best way to make it easy to share images among multiple devices is to store those images on a network drive rather than on any given computer.

I currently own two 2-terabyte network drives (see Photo #1). The device on the far left in the image is our Internet router. Next to the router is a Seagate 2-terabyte network drive. It is connected to the router via an ethernet cable. The small device next to the Seagate network drive is a D-Link Ethernet switch. That device is needed because my router only has 4 ports and I have six devices that need to be connected to the router. The Ethernet switch simply adds an additional 4 ports for connecting devices to the router. Next to the Ethernet switch is a Western Digital 2-terabyte network drive. At the present time, 2-terabyte network drives cost about \$150.00. Our entire photographic collection fills about half of one drive. So 2-terabyte drives won't be adequate storage capacity for our photographic collection forever. But drives keep getting bigger and the price of hard drives keeps coming down. So, for now, we plan to continue to store our entire photographic collection on one network drive.



Photo #1

The second network drive is there for backup purposes. Our photographic collection is constantly being backed up to the second drive. I have the network drives mapped to the computers as Y: and Z: My method for backup is simply to synchronize the two drives daily. In that way photos can be added or manipulated on either network drive, and the synchronization process makes sure that any change that is made to one network drive is mirrored on the other drive. I will describe how the drives are synchronized a little later.

If I had my choice, my preferred method of backup of our photographic collection would be cloud storage. That way, even if our home were to be destroyed in a fire or some other calamity, our photographic collection will be retrievable. I've studied cloud storage extensively and unfortunately, for my budget at this point in time it is just too expensive. An example is Amazon cloud storage. I like Amazon cloud storage. The software is extremely easy to use and the software that Amazon provides permits access to network drives. Many of the cloud back-up options do not provide access to network storage devices. The maximum storage capacity currently provided through Amazon Cloud Storage is one terabyte. That would be enough capacity for our photographic collection for now, but one terabyte of storage in the Amazon Cloud costs \$500.00 per year. Some would argue that the photographic collection is important enough to justify that cost, but I'm retired, on a fixed income, and I just can't afford it. However, cloud storage costs continue to drop and eventually it will become affordable. When I can find a good cloud storage solution that offers 1 terabyte of storage or more for \$100.00 per year or less I'll go for it.

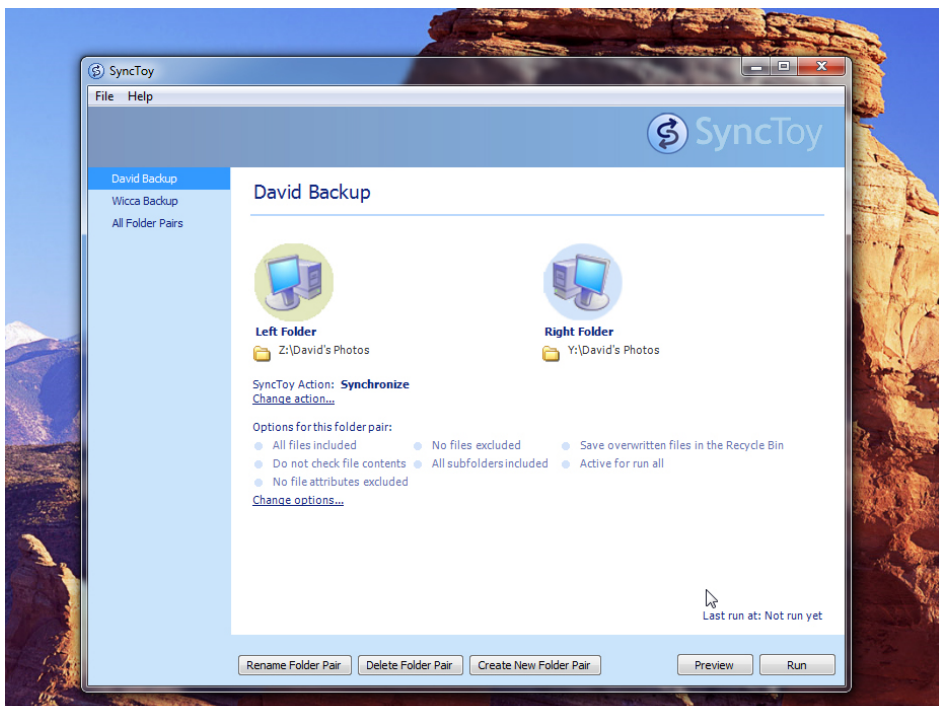
(Continued)

Up until recently I was using a Hewlett Packard Media Vault to store our photographic collection. The HP Media Vault is a device that contains two hard drives in a single chassis. The drives were mirrored using a RAID-1 array. The idea with a RAID-1 array is that if one drive fails, the contents can still be accessed from the other drive. Unfortunately for us, we had an unexpected series of short power outages in our neighborhood, following which both drives in the Media Vault became corrupted. Fortunately I was able to retrieve the contents off one of the drives. Now I am using two separate network drives that are not in a RAID array. The contents are synchronized using software.

Speaking of power failures, we live in a community that experiences power failures way too often. It can be extremely inconvenient and it represents a serious concern for the integrity of digital data. My wife or I will shut down all computer equipment in the house whenever we see inclement weather approaching. And, to help minimize the risk resulting from a power failure, I have both network drives connected to a Universal Power Supply. My computer and my wife's computer are also connected to UPS's. But a UPS is not fail safe. A UPS will keep your equipment powered up for about 20 minutes during a power outage, allowing you to shut things down safely. Unfortunately power outages are not predictable. If one happens when no one is at home all you can do is hope for the best.

It is interesting to note that our Western Digital network drive came with software that provides access to everything stored on that drive over the Web. Therefore, I can view or download any photograph stored on that drive from anywhere I happen to be so long as I have an Internet connection. I can also send photographs to that network storage device when I am out of town. That feature can be very helpful when I am on a photographic outing away from home.

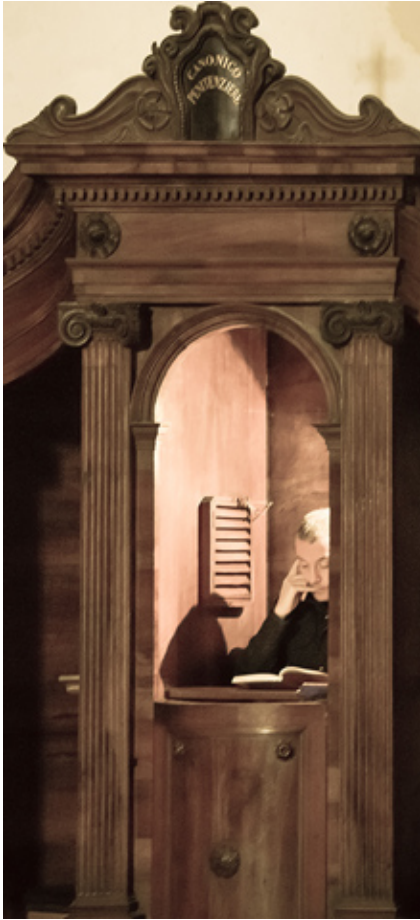
The synchronization software that I have settled on is called SyncToy. It is quite easy to use, works quite efficiently and the software is free.



In this screen shot you can see that I have selected to synchronize Z:\David's Photos and Y:\David's Photos. Hit run and in just a few minutes the process is finished. I am a strong believer in the concept that if the backup process isn't automated it isn't going to be done on any regular basis. Unfortunately SyncToy does not have a built in scheduler, but Windows 7 does. The scheduler in Windows 7 makes it very easy to automate the synchronization process. I schedule the synchronization process to take place every day at 2 AM. While I consider it sufficiently safe to synchronize the two drives once a day, the scheduler can be configured to run the process as often as you choose. A detailed explanation of how to schedule SyncToy in Windows 7 can be found at [this web address](#).

So, that's my backup system and for now I'm sticking to it. If you have a system that you think is better, I'd like to hear from you. Leave me a message on the NBCC listserv with your personal image backup system. ❖

April Competition Winners – “Through the Window”



© Claudia Seelig



© Dick Pelroy



© Eric Schweitzer



© Beth Altman



© Alex Guo



© Ken Goldman

Results of Competition for April 2013 - "Through the Window"

Competition Judge: **Matthew Schmidt**

PRINTS

Novice Traditional (9 entries)

1st	Beth Altman	Mannequin
2nd	Jack Tierney	Well Lit
3rd	Jack Tierney	Window Dressing

Advanced Traditional (8 entries)

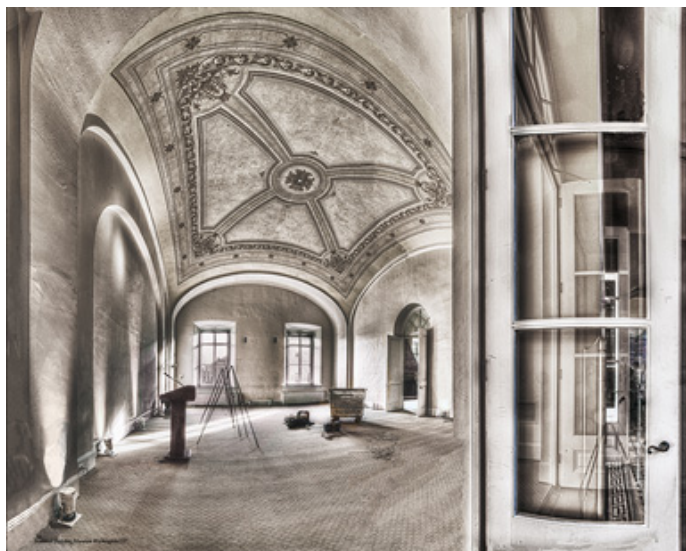
1st	Bill Olson	Just Looking
2nd	Bill Olson	View into the Monastery
3rd	Bill Seelig	Dreamer

Novice Unrestricted (5 entries)

1st	Eric Schweitzer	Contemplation
2nd	Toni Robinson	Old Glory in the Sky

Advanced Unrestricted (11 entries)

1st	Dick Pelroy	National Building Museum
2nd	Stuart Glickman	Capitol
3rd	Dick Pelroy	Longwood Gardens
HM	Chris Hanessian	Nice View



© Dick Pelroy

ELECTRONIC IMAGES

Novice Traditional (14 entries)

1st	Ken Goldman	Rainy Monday
2nd	Jack Tierney	Sweethearts at Tiffany
3rd	Cheryl Naulty	Toys in the Window
HM	Ray Whitman	Dinner View

Advanced Traditional (21 entries)

1st	Alex Guo	Great Wall Sunset
2nd	Gail Bingham	Shop Girl
3rd	Al Tanenholtz	Window Call
HM	Alex Guo	The World Under My Feet
HM	Janet Myder Hammack	Rainy Morning
HM	Bill Olson	It's Outside Inside
HM	Jack Rosenberg	Bus Ride to the Fifties

Novice Unrestricted (9 entries)

1st	Claudia Seelig	Window to the Soul
2nd	Toni Robinson	View from Arena Stage
3rd	Cheryl Naulty	The Tapestry

Advanced Unrestricted (21 entries)

1st	Dick Pelroy	Eastern State Penitentiary
2nd	James Hammack	Window Gills
3rd	Willem Bier	Fishing for Lunch
HM	Willem Bier	Early Spring
HM	Judy Burr	Window Washer
HM	Bruce Cyr	Swimming Pool View
HM	Dick Pelroy	Lonaconing Silk Mill

Cumulative NBCC Competition Scores for 2012-2013 (through April 3, 2013)

PRINTS

Novice Traditional

46 Jack Tierney
29 Beth Altman
20 Cheryl Naulty
16 Ray Whitman
10 Joanne Mars
9 Mike Fleming
9 Steve Lapidus
9 Louise Roy
8 Claudia Seelig

Advanced Traditional

49 Bill Olson
40 Chuck Bress
26 John Pan
16 Bill Seelig
15 Dawn Sikkema
12 Dan McDermott
10 Bill Ho
10 Chris Hanessian
10 Mark Segal
9 Art Hyder
9 Jack Rosenberg
9 Al Tanenholtz
8 Stuart Glickman
6 Dave Clemmer
6 Barbara DeLouise
6 Dennis Green

Novice Unrestricted

75 Eric Schweitzer
20 Marvin Sirkis
19 Gail Bingham
9 Toni Robinson
9 Claudia Seelig

Advanced Unrestricted

49 Chris Hanessian
39 Stuart Glickman
32 Dick Pelroy
19 Bill Seelig
17 Chuck Bress
16 Bruce Cyr
14 Dawn Sikkema
12 Willem Bier
10 Jack Rosenberg
9 Dave Clemmer
8 Judy Burr
6 Dan McDermott

ELECTRONIC IMAGES

Novice Traditional

44 Chet Stein
43 Ken Goldman
40 Joanne Mars
38 Cheryl Naulty
35 John Willis
25 Claudia Seelig
19 Steve Silverman
15 Jack Tierney
14 Joan Linderman
12 Toni Robinson
12 Ray Whitman
6 Nancy Brun
6 Gene Haddon
6 Allen Melser
6 Louise Roy
6 Martin Zober

Novice Unrestricted

45 Cynthia Hunter
38 Eric Schweitzer
37 Ira Adler
30 Claudia Seelig
24 Cheryl Naulty
10 Steve Robinson
9 Toni Robinson
9 Meryl Silver
6 Steve Silverman

Advanced Traditional

68 Bill Olson
55 Jay Gartenhaus
51 Gail Bingham
28 Alex Guo
24 Mark Segal
18 Janet Myder Hammack
16 Dawn Sikkema
14 Judy Burr
14 John Pan
14 Al Tanenholtz
12 Carol Lee
12 Kent Mason
10 Art Hyder
9 Melissa Clark
6 Allen Melser
6 Bob Peavy
6 Jack Rosenberg
6 Jean Yuan

Advanced Unrestricted

45 José Cartas
41 Bruce Davis
38 Bruce Cyr
27 James Hammack
26 Evelyn Jacob
25 Anita van Rooy
22 Dick Pelroy
21 Jack Rosenberg
20 Willem Bier
20 Dawn Sikkema
18 Chuck Lee
14 David Davidson
12 Judy Burr
12 David Clemmer
12 Lori Ducharme
12 Carol Lee
10 Stuart Glickman
10 Allen Melser
8 Al Tanenholtz
6 Jim Hawkins
6 Janet Myder Hammack
6 John Pan



© Bill Olson

**North Bethesda Camera Club
48th Annual Awards Event
Wednesday, June 5, 2012
7:00pm**

*Asbury Methodist Village
Rosborough Community Room
409 Russell Ave., Gaithersburg*

Reception: 7:00pm

Fresh vegetables and dip
Fresh fruit platter
Assorted sodas

Dinner Buffet: 7:30-8:30pm

Rolls and butter
Mixed green salad with choice of dressing
Chicken with garlic sauce
Sliced tenderloin of beef with demi-glace
Saffron rice
Fresh vegetable medley
Chocolate cake
Coffee (regular & decaf), Tea, Iced Tea
Bring your own wine if desired

Awards event follows immediately after dinner in the auditorium

RETURN THE LOWER PORTION OF THIS FORM WITH PAYMENT BY FRIDAY, MAY 24

Make checks payable to North Bethesda Camera Club (or NBCC)
Turn in this form with your check to Bill Olson at a Club meeting, or
Mail to: Bill Olson, 10720 Laurel Leaf Place, Potomac, MD 20854

Number of reservations: _____ x \$36 each = \$ _____ enclosed

Number of vegetarian meals requested: _____

Names of persons attending as you would like them to appear on nametags/ placecards:	

NORTH BETHESDA CAMERA CLUB - APPLICATION FOR MEMBERSHIP – 2013-2014

Current member renewals (completed applications with dues paid in full) **must** be received by **June 15, 2013** to ensure membership renewal. After June 15, memberships will be offered to those on the waiting list.

Please PRINT legibly and fill in COMPLETELY even if this is a renewal!

Please note that all memberships are individual and cost \$65. Fill out one form per member.

CHOOSE ONE: RENEWAL OR NEW MEMBERSHIP

I WANT PRINTED NEWSLETTERS SENT TO ME BY US MAIL (\$35 ADDITIONAL)

I WANT AN ELECTRONIC COPY OF THE NEWSLETTER SENT TO ME BY EMAIL (FREE)

Note that the newsletter is also freely available on the NBCC Web site, <http://www.nbccmd.org/newsletter.htm>

Name

Address

City

State

Zip

() _____

Phone (Home or Cell)

E-Mail Address (please print carefully)

Occupation

Employer (optional)

() _____

Business Phone

MY CONTACT INFORMATION HAS CHANGED FROM THE 2012-2013 MEMBERSHIP BOOK (IF RENEWAL)

I AM A MEMBER OF OTHER CAMERA CLUB(S): _____

I AM A MEMBER OF PHOTOGRAPHIC SOCIETY OF AMERICA.

I WOULD BE WILLING TO SERVE ON A COMMITTEE.

I AM WILLING TO HELP WITH BRINGING AND SERVING REFRESHMENTS.

I AM WILLING TO MAKE A PRESENTATION AT A WORKSHOP OR PROGRAM ON :

I would like to have the following kinds of educational training, workshops, and programs:

I would like to see the following club field trips: *(Use back of form for additional suggestions)*

Please write any additional ideas to improve NBCC below, or on the back of this form:

I hold NBCC and each member of NBCC, individually and collectively, blameless for any injury that may occur to me or my guests, or my property, while participating in any NBCC activity or event.

Applicant's Signature

Date of Application

CHECKS SHOULD BE MADE OUT TO: NORTH BETHESDA CAMERA CLUB

Members considering Emeritus status, thus having their dues waived, should note the eligibility requirements in the Membership Book and apply to Membership Chair for subsequent Board approval.

Please mail completed form and check to: Chuck Lee, 14603 Carrolton Road, Rockville, MD 20853.

2012-2013 NBCC Board of Directors, Standing, and Special Committees

<u>President</u> <i>Carol Lee</i>	<u>Vice President</u> <i>David Davidson</i>	<u>Secretary</u> <i>Bruce Cyr</i>	<u>Treasurer</u> <i>Bill Olson</i>	<u>Directors</u> <i>Gordie Corbin</i> <i>Bob Dargel</i>	<i>Kent Mason</i> <i>Bob Peavy</i>
---	---	---	--	--	---------------------------------------

<u>Programs</u> <i>Steve Gelband</i> Ira Adler Gail Bingham Sharyn Greberman Jean Hanson Kent Mason Paul Taylor Jean Yuan	<u>Membership</u> <i>Chuck Lee</i> <u>Exhibits</u> <i>Bill Olson</i> Sybl Erdman Evelyn Jacob Dawn Sikkema Alan Simmons	<u>Competition</u> <i>Judy Switt</i> <i>Prints</i> Bill Ho Bill Richards <i>Electronic</i> Willem Bier Tom Field John Willis	<u>Judges</u> <i>Ken Goldman</i> Stuart Reiter Chet Stein <u>Webmaster</u> <i>Tom Field</i> <u>Lens & Eye</u> <i>Lori Ducharme</i>	<u>Hospitality</u> <i>Cynthia Hunter</i> Alla Doroshko Mike Fleming Terry Van Houten Steve Lapidus Jim Render Virginia Render <u>New Member Liaison</u> <i>Gail Bingham</i>	<u>Field Trips</u> <i>Cheryl Naulty</i> Raymond Ao John Barnes Gail Bingham Barbara Delouise Deeva Garel Bobbie Havel Cynthia Keith Steve Silverman
--	---	---	--	---	---

Voting members in bold

<u>Education</u> <i>Chris Hanessian</i> Tom Field Tatiana Watson	Kent Mason Roy Sewall Alan Sislen	<u>Community Outreach</u> <i>Joel Hoffman</i> Judy Switt Chris Hanessian	Bob Peavy Kent Mason Meryl Silver Ron Deitrich	<u>Photo Essay</u> <i>Stu Mathison</i> Willem Bier David Davidson	Tom Field John Pan John Willis
--	---	---	---	--	--------------------------------------

<u>Competition Image Review</u> Gordie Corbin Tom Field Bob Peavy	Alan Sislen Judy Switt Anita Van Rooy	<u>Long-Range Planning</u> David Davidson Bob Dargel Lori Ducharme Tom Field	Chuck Lee Bob Peavy Paul Taylor	<u>Print Galleries</u> Bill Seelig Claudia Seelig
---	---	---	---------------------------------------	--

Awards Event: John Villforth **PSA Representative:** Judy Burr **Database Administrator:** Roy Sewall

FIRST CLASS MAIL

