

The Lens and Eye



Volume 54 Number 2 | October 2018 | Editor: Cherry Wyman | Website: www.nbccmd.org

Calendar

Events start at 7:30 p.m. unless otherwise noted.

October Events

- Oct 3** Competition: EIC, 3-Month Open
Oct 10 Competition: Prints, 3-Month Open
Oct 17 Program: The State of the Camera Industry with Burke Seim
Oct 20-21 early am: Shenandoah Field Trip
Oct 24 Board Meeting
Oct 31 Program: Body-of-Work Primer with Alan Sislen and Roy Sewall

November Preview

- Nov 2-4** Nature Visions Photo Expo
Nov 7 Competition: Selective Focus
Nov 7 10 a.m. Baltimore B&O Railroad Museum Field Trip
Nov 14 Program: Member Expo
Nov 28 Program: Photographing East Africa

October Competition Theme: 3-Month Open

Any photograph taken on or after July 1, 2018. The competition is divided into two parts: October 3: Electronic images only, and October 10: Prints only. **The deadline for electronic images is 7:30 p.m. on Sunday, September 30.**

As always, each member may submit no more than two entries per month, regardless of the number of days the competition takes.

For more winning images from the September Nature competition, see pages 13 - 18.



Humming Bird © Chuck Lee

October 3 Judge: Roz Kleffman

Roz Kleffman has been a photographer for many years. She picked up a Brownie camera at age 12 and started photographing family and friends. By 18 years old she was dubbed "the official family photographer" and photographed all family events.

In 1979, she moved to Maryland with her husband Dave and their two children. She did not waste any time getting involved in community activities and the local camera club. Roz joined the Bowie-Crofton Camera Club (B-CCC) in 1980 and has held every office in that club except treasurer. Four years as vice president of competition for B-CCC led to her role as competition vp for the Greater Washington Council of Camera Clubs (GWCCC). Many members of North Bethesda Camera Club know Roz from her years working for GWCCC competitions and those of the All-Maryland Council of Camera Clubs. She was active in both councils until they disbanded in 2000. (The newly formed Maryland Photography Alliance has replaced both councils here in Maryland.)

Roz remained very active at B-CCC over the past 35 years. After 22 years as club president, Roz has taken a short break. She remains active with the newly formed Maryland Photography Alliance and continues to promote photography through judging, teaching, PSA and exhibits. Her love of travel and scuba diving has given her many great photo opportunities. She recently returned from a three-week adventure in Patagonia with four other photographers. Roz sees herself as a "jack of all trades" with a slant on capturing that image where ever she may wander.

A registered nurse, Roz volunteers at the Anne Arundel Medical Center in Annapolis in radiation oncology. She worked on the set of "House of Cards" as a nurse in the health room, where she took care of injuries, headaches, and other health issues to keep everyone happy and healthy.



Patagonia Mountains



Remembering Jim Norton

Photos © Roz Kleffman

Contents of This Issue

- 2 October events and member exhibits
- 6 Splinters from the board, classes, leadership gallery
- 7 November events
- 9 PSA and Maryland Photography Alliance News
- 10 Making a photo essay on your Mac
- 11 Competition results and winning images
- 19 Roll Call

October 10 Judge: Lynn Silverman

Lynn Silverman received her BFA from the Pratt Institute in Brooklyn, New York, and her masters in fine art from Goldsmiths College in London, England. In addition to publishing four photography books and participating in many solo and group exhibitions, her photographs may be found in public and private collections in Australia, Great Britain, and the United States. In 2010-2011, she was awarded a Fulbright Scholarship to the Czech Republic. Lynn currently teaches photography at the Maryland Institute College of Art.



Lookout No. 54

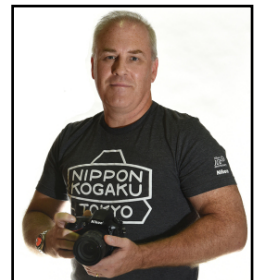


Jan Palach and Square

- Photos © Lynn Silverman

October 17: The State of the Camera Industry with Burke Seim

Join us on October 17th for a slightly different kind of presentation with Burke Seim. Burke is president and owner of Service Photo in Baltimore. It is Maryland's **only** specialty camera store providing photographers with all types of new and used photo equipment, camera rentals, and equipment repairs.



For those of you who closely follow the photo industry, you know that this fall will set a milestone in the release of new camera products with full-frame, **mirrorless** Nikon and Canon digital cameras coming out. Burke will discuss and demonstrate many new photography products including the new, full-frame mirrorless cameras. And, while there is plenty to talk about with just the new gear, Burke will also talk about the changes seen over the last 30 years in the photo industry, including the impact of today's highly competitive internet-based business climate as it relates to all types of photo gear. He will talk about the challenges facing the photo industry today. Burke will also explain how the photography industry works and help us understand the industry that fuels our passion. His insights will educate us and help us find the best products for our needs, at the best prices, while avoiding many common pitfalls of buying in an internet world.

Bring your questions about cameras, lenses, accessories, warranties, internet scams, or anything else related to photographic equipment, and Burke will surely give you an honest and candid answer based on his 30 years of experience.

- David Terao, Programs Chair

October 19-21 Field Trip - Shenandoah National Park

Enjoy glorious vistas, intimate scenes, and fall color in the Shenandoah National Park the weekend of October 19-21.

Limited to 12 members, this field trip will depart from the Days Inn in Luray, Virginia, very early Saturday, October 20, to shoot the sunrise at one of the overlooks near the Thornton Gap entrance to Skyline Drive. We will then have a late breakfast at the Skyland Inn and continue with stops along Skyline Drive, an optional hike, and free time and suggestions for exploration. We will end the day with a late afternoon shoot at Big Meadows and a nearby sunset, then head to dinner at the Big Meadows Lodge.



Shenandoah © Tammy Trocki

Sunday there are possibilities in Luray, including Luray Caverns and an old car and carriage museum, or in nearby Sperryville and/or Little Washington, where there is lots of history and small town/rural images. There is the possibility of a special two-hour photographic tour of Luray Caverns Sunday morning, which includes the use of tripods and exclusive access to the caverns. This photographic tour is \$70 per person, so we need to gauge interest in pursuing this opportunity.

The specific itinerary of the field trip is still being researched, so please let us know if you have a suggestion.

Currently, we have a block of eight rooms for two nights at the Days Inn in Luray. While not a "luxury" hotel, the prices are reasonable -- \$99 for Friday night, October 19 and \$139 for Saturday night, October 20. There are several other hotel/B&B options in the area, depending on your price range and preferences. We will give the Days Inn registration information to the first eight members to sign up. Please let us know soon if you are interested in staying at the Days Inn, as these rooms are filling quickly.

We will also keep a list of RSVPs from those on the NBCC waiting list and members who wish to bring guests and will notify those people on October 1 if there is space available. (Note: we plan to carpool from the Days Inn, so members can bring a guest who might wish to explore the area independently and then join the group for dinner.)

Please RSVP to Tammy Trocki (tammytrocki@comcast.net).

- Tammy Trocki, Field Trips

October 31 - Introduction to Bodies of Work with Alan Sislen and Roy Sewall



Roy Sewall

Our program on October 31 will be an introduction to Bodies of Work (BOW), jointly presented by **Alan Sislen and Roy Sewall**. Both Alan and Roy concentrate their own photography on BOWs instead of on individual, stand-alone photos. They believe that a group of several inter-related photographs can have much more impact than a single photo. Importantly, a BOW can feed an exhibit, a digital book, or a portfolio to show potential clients or just friends. BOWs are a critical stepping stone to advance your photography and, as in many things, Alan and Roy will show how the "whole can be greater than the sum of its parts."



Alan Sislen

Alan and Roy will discuss the characteristics that make a strong BOW, provide examples of both strong and weak BOWs and discuss how to embark on what may be a new way for you to think about your photography. As a follow-up, there will be a companion program in April 2019 in which members can submit BOWs for critique.

Member Exhibits

Sarah Hood Salomon has a new show at Waverly Street Gallery in Bethesda. Entitled "Gestures," the show features people who are alone, whether they are solitary figures or those in a crowd who are lost within their own thoughts. These self-imposed solitudes cannot be fully understood, but glimpses of their meaning can be seen in the gestures and body language of the individuals. Her artist's talk is from 2-4 pm on September 30. The show runs until October 6.

From October 8 to November 14, **Kathryn Mohrman** will have a one-person show featuring images from her Kenyan safari at Beanetics Coffee Roasters in Annandale, Virginia.

Richard Chitty is exhibiting some of his images in a group photography exhibit at the Unitarian Universalist Congregational Church of Rockville. The exhibit runs through October 14.

Kathryn Mohrman, Thomas Marchessault and **Jean Pierre Plé** have several images in the fall/winter Crystal City Fotowalk Underground exhibit on travel photography. It is sponsored by Exposed DC.

Dual Exhibit by Roy Sewall

Roy Sewall will be having a dual exhibit November 1 to 28 at the Artists & Makers Studios, 11810 Parklawn Drive, Rockville, Maryland 20852. There are two adjacent galleries, and Roy will have two completely different yet concurrent exhibits.

"C&O Canal Panoramic Views" is a recent project that returns Roy to his roots and long-time stomping grounds. The 14 wide-view photographs, printed on metal, depict the exceptional beauty of the canal during its more tranquil seasons: fall and winter.

"*Mysterra*" is a body of work of illusions, with sub-themes of fantasy, whimsy, and spirits. The 23 framed photographs depict scenes that Roy could not see but could imagine. Roy says, "I have always loved magic. I find it to be a thoroughly refreshing departure from our daily experience of being overwhelmed by information and facts. I don't want to know how the illusion was done; I just want to take in the ingenuity and the mystery. And this is how I hope people will react when they view *Mysterra*."

The Studio's opening reception is Friday, November 2, from 6:00 to 9:00. Roy recognizes that this coincides with the opening day of Nature Visions in Manassas, and that many of his photographer friends will not be able to attend the reception. So a second reception is planned for Saturday, November 10 from 1:00 to 3:00 p.m.

Splinters from the Board

How many of you have heard the phrase "It's not what you know, it's who you know?" Well, maybe it's really both, and I love when they intersect. In our collective group we have a huge knowledge and experience base. Having people who share what they know enhances the rest of us. For starts, I want to give a HUGE shout out to the NBCC members selflessly giving their time and energy as facilitators to make our education committee small group program so incredibly successful. The program is off and running and promises to make us all more talented and connected.

In addition to sharing provided within the organizational framework, we have individuals who have gems to share. For instance, we should thank Evelyn Jacob for her tidbit identifying free access to Lynda.com. Did you know that if you have a Montgomery County public library account (maybe other jurisdictions as well), you can go online and access all the Lynda.com training materials FOR FREE?

One of the challenges any organization faces is providing sufficient and timely information. I encourage and invite you to share what you know. If you're not a member of the Yahoo group, you might find it helpful for technical discussions. If it's something that might be of value to the entire club, you could request the information be sent out in a GordieGram or consider submitting an article to the Lens and Eye. And, if you know of someone in the club who is having health or other serious issues, please send a note to our Share & Care committee chair.

We have also expanded our network quite a bit by our involvement with the [Maryland Photography Alliance](#); thanks to Carol Lee and Stephanie Banks for making the trek to Baltimore for meetings and for keeping us informed of opportunities from this newly formed network.

- Toni Robinson, NBCC President

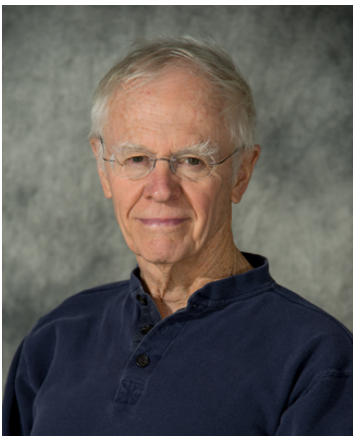
Education Update

A number of classes that start soon are closed but we still have room in Joel's Artificial Lighting course (now second Thursday evening) as well as one slot in his Portraiture class. Sarah's Focusing your Vision class also has a couple of slots open. Registration for the groups needs to go through the Education Committee email: edu@nbccmd.org. Click [here](#) for information about classes.

- Jill Randell, Education Chair

Leadership Gallery

Starting with this issue, we will publish photos of the leadership team so that members can identify us and come up and chat with us or ask questions.



*John Norvell, Nature
Visions Representative*



*Gail Bingham,
Field Trips Chair*



Richard Chitty, Vice President

November 2-4: Nature Visions Photo Expo

Nature Visions Photography Exposition (NVPE) 2018 will be held on Nov. 2-4, 2018. The location will be the same as last year, the Hylton Performing Arts Center, Manassas, VA. The overall schedule will be similar, with 3 full days of seminars, lectures, vendors, workshops, parrot shoot, raptor shoot, image reviews, and other activities. The schedule again includes numerous well-known speakers. Information about the speakers can be found at the NVPE webpage (<http://naturevisions.org/speaker>). Many of the NVPE2018 activities are not focused on nature photography and will appeal to photographers interested in non-nature topics. These include the Photo Art competition, Image Review, and numerous talks and workshops. Many NBCC members have entered the annual Expo competition; prints of winning photos will be displayed during the Expo.

We hope NBCC members will plan to attend NVPE 2018.

For questions, contact a member of the NBCC Nature Visions committee:

John Norvell norvellj@msn.com

Steve Silverman ssilverman8384@comcast.net

Beth Altman BLAltman@juno.com

Guillermo Olaizola golaizola@verizon.net

Ray Whitman raywhitman@icloud.com

- John Norvell, Nature Visions Chair

Upcoming Competitions

November 2018 - *Selective Focus*

March - *At Play*

December - *Facial Expressions*

April - *Panorama*

January 2019 - *Open*

May - *Black and White Open*

February - *Hometown DC*

Descriptions of each topic can be found on the NBCC website and in the program booklet.

November 7 Field Trip : Baltimore's B & O Railroad Museum



Photo © Jim Turner

Our November field trip will be to the B&O Railroad Museum in Baltimore (<http://www.borail.org/>) on Wednesday, November 7. We will meet at the museum (901 West Pratt St., Baltimore, MD 21223) at 10 a.m. , when it opens. The museum houses collections of 19th- and 20th century artifacts related to America's railroads including many pieces of rolling stock (locomotives, cars, etc.) and related paraphernalia. It is housed in Baltimore's historic Mount Clare Station and the adjacent roundhouse. The museum has been called one of the most significant collections of railroad treasures in the world.

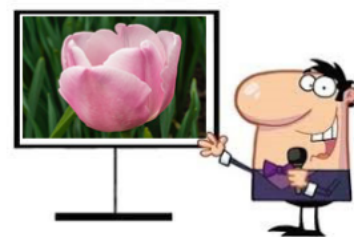
Tripods are allowed and recommended, the light is reasonable and can be interesting, and you will be able to get close to, and climb into, some of the rolling stock for images of wheels, gears and gauges. Many of the things to photograph are indoors but there are also a number of pieces of rolling stock outdoors. Wide angle zooms and macro lenses will be the most useful.

The entry fee is \$20 (\$17 for seniors, 60+), and parking is **on-site** and free. The museum is handicap accessible and ADA compliant. If you are planning on coming on this field trip please email Jim Turner (Jim_Turner_1945@yahoo.com) so I can look for you and send you updates if any. People on the wait list are welcome.

- Jim Turner, Field Trips

Mark Your Calendars: 2018 Member Expo Coming Soon!

This year's Member Expo (ME) will be held on **November 14, 2018** (7:30 p.m.). You may recall that the purpose of the ME is twofold: to give NBCC members an opportunity to share their work and for NBCC members to learn about – and be inspired by – the creative things their fellow members are doing. The event is totally non-competitive and informal. **All NBCC members are encouraged to participate.** As in prior years, you may **submit up to 12 images**. We recommend that each presentation have a central theme **or** common thread (e.g., flowers, insects, travel, street, portraits, landscapes, etc.). We allow each member some time for comments or an introduction before her/his showing. The work does not have to be current. Members with **all** levels of expertise are encouraged to participate; this is NOT just for the best images in the club. It is important to note that entering images in ME does not restrict these images from being entered into other venues - including competitions, exhibits, photo essays, etc.



New NBCC members: This program is especially for you, both as a participant and as an audience member. It will give you a chance to show other members some examples of your work and interests, and you can learn about what other members are doing. Please put it on your calendar and plan to participate and/or attend.

Further details on how to submit/participate will be forthcoming as we get closer to the program date. The portal for entering images will open in early November, so watch for notices.

- David Terao, Programs Chair

PSA News and Member News

The PSA Conference will be held in Salt Lake City the first week of October. There is no big news from PSA now, but the next newsletter should have reports from those attending the conference.

PSA member news—Congratulations to **Larry Mars**, who was awarded his 3rd and 4th Stars in the Photo Travel Division; his travels are paying off quite well. **Judy Burr** received her 5th Stars in Photo Travel Division and in Projected Image Division-Monochrome and her Galaxy 2 in Projected Image Color. Record keeping is a big challenge, as it is easy to miss things, to make other mistakes like submitting different titles for the same image or skipping an acceptance when applying for credit. I can't imagine how PSA members kept records without a computer!

The Photo Travel Essays have been judged and two NBCC members will receive awards at the conference. **Nancy Wolejsza** was awarded an honorable mention for her travel essay, *Walking the Camino*, and a silver medal for her mini-essay, *Glimpse of New Zealand*. **Judy Burr** received a Bronze Medal for her Mini-Essay *Drying Landry*. All the winning travel essays will be on the PSA website soon and the Projected Image winning essays are already on the PSA website here: <https://psa-photo.org/index.php?pid-photo-essay-2018-results>. It is always worthwhile to see essays other than the fantastic ones done in NBCC.

- Judy Burr, PSA Representative

Maryland Photography Alliance News

The Maryland Photography Alliance just announced its **2nd Annual Photography Contest**, which I hope NBCC members will consider entering. We were very successful last year with five winners! There is no charge to enter. There are \$700 in prizes through the sponsor, Nations Photo Lab. Photographers of the top images will be invited to exhibit at the Maryland State House of Delegates. The categories are Landscape Photography, Street Photography, Iconic Maryland, and Open. For more information and to enter the contest go to: www.MDPhotoAlliance.org/contest

The **Judge Certification Program** will be starting this October, led by Roy Sewall. Those participating must attend all three classes and agree to judge twice at MPA clubs within a two- year period. The classes will be held on October 6, October 27, and December 1– all from 9:30 am to noon. MPA directors had the first opportunity to attend the first session and five signed up. Currently, there are three seats available and anyone interested should contact Steve Sattler at: mpa@mdphotoalliance.org

Save the date for the **2nd Annual "Odyssey of Light" Seminar** which will take place on Saturday, April 27, 2019. Ken Sklute, A Cannon Explorer of Light, will share his expertise on Landscape and Night Photography. Essdras Suarez, a two-time Pulitzer Prize Award winning photographer, will educate us on street photography techniques.

- Carol Lee, MPA Chair

Making a Photo Essay on Your Mac

Making a photo essay is a tradition for many of our club members. (See Stu Mathison's article in the September Lens and Eye for a comprehensive summary.) Stu's writeup mentions that Mac members have used iPhoto, iMovie, or Aperture to make photo essays. An update to that list should include Mac 'Photos' and I've written up detailed instructions for using 'Photos' to make an essay (which we will post on the NBCC site). But my own recommendation for those who want to make an essay on the Mac is to use Lightroom (which is really the best way to catalog your photos anyway). It provides a richer set of options for creating the essay than either 'Photos' or iPhoto. It took me about 15 minutes to create a draft essay this morning from pictures that were already in my collection.



The exported video was 640 MB, so you need to share it via something like Dropbox or a physical thumb drive.

For all of these photo programs my approach is the same —

Gather together about 40 images or less, select slideshow, adjust the playback of your slideshow to fit to your chosen music, and then export as a video at high resolution (preferably 1080p).

Detailed information about the essays and their construction is at “Detailed information about the NBCC Photo Essay Program, and the essay show on March 10, 2019,” can be found on our website at:

<http://nbccmd.org/photoessay.htm>

- John Willis, Photo Essay Committee



Several club members, including Lawrence Ballon, Max Kantzer, Gary McDavid, Beth Altman, Jean-Pierre Plé, Peter Winik, and Michele Egan (not pictured) participated in a field trip to the Union Market neighborhood in Northeast DC on Saturday, September 15.

Photo © Michele Egan

Competition Results: September (Nature)

Judge: Victoria Restrepo

PRINTS			ELECTRONIC IMAGES		
--------	--	--	-------------------	--	--

Intermediate (9 entries)

1st	Louise Roy	Pink Lotus
2nd	Kay Norvell	Brown Bear Cubs
3rd	Dave Sternbach	Sierra Nevada

Novice (18 entries)

1st	Marc Goldstein	Purple Lily
2nd	Sue Green	Green Flow
3rd	Kathryn Mohrman	Elephant Portrait
HM	Pauline Jaffe	Lotus
HM	Pauline Jaffe	Waterlily
HM	Max Kantzer	Giant Water Lilies

Advanced (25 entries)

1st	Jack Rosenberg	Milk Weeds
2nd	Tammy Trocki	Fall Frost
3rd	Bruce Cyr	Bee in Anemone
HM	David Clemmer	Taughannock Falls
HM	Jack Rosenberg	Let's Twist
HM	Tammy Trocki	Well Hello!
HM	Carol Walsh	The Edge of the Marsh
HM	Carol Walsh	Early Morning Drama

Intermediate (39 entries)

1st	Robert Barkin	Norway Lights
2nd	James Corbett	Sunflower Honeybee
3rd	Michael Blicher	Pelican Dive
HM	Beth Altman	Calla Lilly
HM	Dillard Boland	Floral Geometry
HM	James Corbett	Sunbather
HM	Neil Hermansdorfer	Gotcha!
HM	Tom Marchessault	Great Blue Heron
HM	Diane Poole	Red Hot Poker
HM	Claudia Seelig	Mushroom Gills
HM	Peter Winik	Moroccan Monkey Family
HM	Peter Winik	Sahara Sunrise
HM	Cherry Wyman	Undercover

Advanced (28 entries)

1st	Nancy Wolejsza	Vervets Wrestling
2nd	James Chia	Crystal Blue Chamber
3rd	Chuck Lee	Humming Bird
HM	James Chia	Disappearing Glacier
HM	Melissa Clark	White Lotus and Bees
HM	Carol Lee	Bluejeans Frog
HM	David Terao	Dandelion
HM	David Terao	Windswept Juniper

NBCC Competition Results

Cumulative Scores Through September 2018

PRINTS

Intermediate

10 Louise Roy
9 Kay Norvell
8 Dave Sternbach

Advanced

16 Jack Rosenberg
15 Tammy Trocki
12 Carol Walsh
8 Bruce Cyr
6 David Clemmer

ELECTRONIC IMAGES

Novice

12 Pauline Jaffe
10 Marc Goldstein
9 Sue Green
8 Kathryn Mohrman
6 Max Kantzer

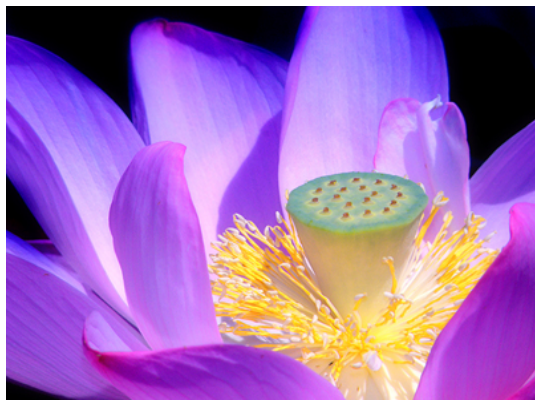
Intermediate

15 James Corbett
12 Peter Winik
10 Robert Barkin
8 Michael Blicher
6 Beth Altman
6 Dillard Boland
6 Neil Hermansdorfer
6 Tom Marchessault
6 Diane Poole
6 Claudia Seelig
6 Cherry Wyman

Advanced

15 James Chia
12 David Terao
10 Nancy Wolejsza
8 Chuck Lee
6 Gail Bingham
6 Melissa Clark
6 Carol Lee

1st Place Winners, September (Nature) Competition



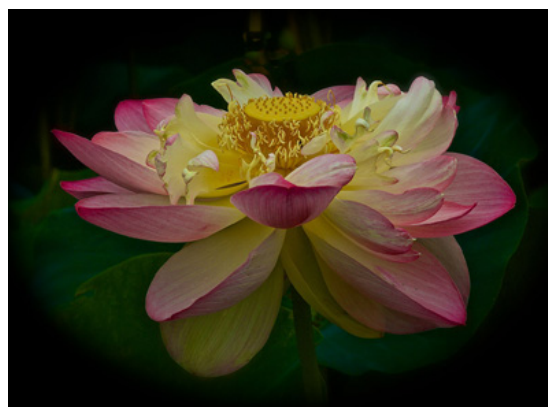
Novice EIC - Purple Lily
© **Marc Goldstein**

This was shot at Kenilworth Aquatic Gardens. ISO 64, 92mm telephoto lens, Nikon Camera f6.3 @ 1/640 of a second. I go there about three times a season. I love shooting the lilies and the wildlife.



Intermediate EIC - Northern Lights
© **Robert Barkin**

On a very cold, windy night north of the Arctic Circle in the Lofoten Islands in Norway, we were almost ready to give up on seeing any worthwhile Northern Lights when suddenly the sky exploded. Light was dancing in sine waves across the sky. It was a total 360-degree experience. A streak seeming to emerge from a mountain provided the setting for my first shots. Then, I turned around and saw a green swirl offset by a crescent moon. Below the sea the beach had taken on the green cast of the sky. The newspaper said the next day that it was the most vivid Northern Lights in years.



Intermediate Prints - Pink Lotus © **Louise Roy**

I took the pink lotus at Kenilworth Park and Aquatic Gardens on 8/11/2017 when a friend suggested we visit it on an otherwise bleary day. There was nothing else to do but take images of flowers, so I did that with my Canon 5D Mark III. I took numerous images, some of which will undoubtedly be entered in future assignments, as appropriate. I had no idea I would enter the pink lotus in this month's competition because I had not read what the competition assignment was. I made some adjustments, such as cropping and sharpening, as well as increasing the definition, and touching up the saturation and vibrancy.



Advanced Prints - Milk Weeds
 © **Jack Rosenberg**

I took this in Black Hills State Park. I originally walked right by this weed, but my wife pointed it out and with her insistence, I took a couple of images. After I made this image, I was shocked by its depth and beauty. Taken mid-afternoon with natural lighting. Canon 7D, 50mm lens, ISO 400, 1/250, f/8.



Advanced EIC - Vervets
 Wrestling © **Nancy Wolejsza**

This image was taken in Tarangire National Park, Tanzania. We arrived at the visitor's center and found a troop of vervet monkeys running around the picnic area, obviously having fun. Their exuberance was infectious. I had to record some aspect of their escapades. I set the camera on continuous shooting and tried to follow the action as they darted in and out of the area, over the picnic tables and up and down the trees. The lighting was bright, which allowed me to use a small aperture and still have a decent shutter speed to stop the action.

2nd Place Winners, September (Nature) Competition



Intermediate Prints - Brown Bear Cubs
© **Kay Norvell**

I took this photo in July on a trip to Lake Clark N.P. in Alaska with Mollie Isaacs. It was great to photograph the coastal brown bears because they were very accustomed to seeing photographers on foot and they ignored us, and we did not feel threatened by them. We loved watching these one-year-old cubs play-fighting and rolling around in the grass like mischievous kids.



Novice EIC - Green Flow
© **Sue Green**

This was taken in a garden in Brattleboro, Vermont, this summer. It was around noon and the rain had just stopped. It was still overcast, but the light was even and beautiful. Canon EOS 5D Mark IV, aperture priority; f32 @ 1/200 sec. Zoom lens, focal length 200 meters. ISO 5000. I was attracted to the flowing lines and beads of water. I saturated the color slightly. The photo was among a group of shots I took at a particularly beautiful Air B&B and I sent them to the host as a thank-you gift.



Intermediate EIC - Sunflower
Honeybee
© **James Corbett**

It was with trepidation that I made my way to McKee Beshers' sunflower fields. Many shots from there look the same. At 11 in the morning, I decided to shoot handheld and focus on isolating my subjects with a 100mm macro lens. To overcome the sun, I used a camera-mounted speedlight with a grid to tightly focus the light. At 1/400 f/5.6 ISO 100 a few feet from the flower, I got a bright flower and bee in sharp focus with a dark background. In post, I cleaned up imperfections on the leaves and increased clarity and contrast. I added a stronger vignette around the edges and adjusted saturation to strengthen that summer feeling.



*Advanced EIC - Crystal Blue Chamber © **James Chia***

The image was shot inside an ice cave in the mountains just north and outside of Juneau, Alaska. It was amazing to see how the light radiates from the entrance of the ice cave and casts this crystal blue or sometimes turquoise color on the ceiling and all around the ice inside the cave. I set up the frame with the foreground water trickling down to both of the lower corners with just enough reflected light as the leading lines which leads the eye to the focal point in a big to small, cool to warm and dark to light transition.



*Advanced Prints - Fall Frost
© **Tammy Trocki***

I took this image in Post Falls, Idaho, while visiting our daughter last Thanksgiving. Walking early one morning, I was drawn to the frozen dew that lightly frosted some fallen leaves by the sidewalk. I liked the sparkle and texture of the ice and the subtle color that remained in the leaves. It took a while to find a pleasing pattern of leaves that would make a good composition.

3rd Place Winners, September (Nature) Competition



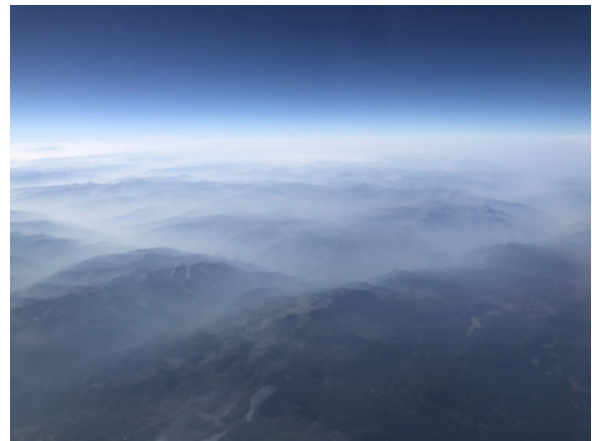
Intermediate EIC - Pelican Dive © **Michael Blicher**

I was at Sarasota Bay in January looking for herons or ospreys catching fish. Having no luck, I looked over at the bay and saw an abundance of pelicans flying around. I locked onto this group of four pelicans and followed them in low continuous mode as they flew across. All four seemed to stop in mid-air and suddenly go into a synchronized dive and I was lucky enough to catch them entering the water. Shot with an Olympus EM-1 II and Leica 100-400 lens.



Novice EIC - Elephant Portrait
© **Kathryn Mohrman**

This elephant portrait was taken in Kenya last year, as about 15 elephants walked down the hill toward our stopped vehicle, split and divided around the van, and then continued down the hill. They were absolutely silent! This is the closest I've ever been to an elephant. The photo is un-cropped at the short end of a telephoto lens—146mm.



Intermediate Prints - Sierra Nevada
© **David Sternbach**

Flying home, at first there was too much haze from the forest fires on the west coast, but as the air cleared we began passing over the Sierra Nevadas, and suddenly, there were stunning sights. I could have dug out my Sony, but might have missed some of the best views, so I just grabbed my iPhone 8+ and began shooting. This is a remarkable part of our world - empty, rugged, forbidding, and extraordinarily beautiful. Of the many shots I took, this one seemed to best embody the mysterious, brooding quality of these mountains.



Advanced EIC - Humming Bird

© Chuck Lee

The image was taken in Costa Rica with an Olympus OM-D Mark 11 on a tripod, with a 24-150mm lens at 73mm and at a shutter speed of 1/6000 seconds and an ISO of 1600.



Advanced Prints - Bee in Anemone © Bruce Cyr

Taken in the backyard recently with 100mm macro on Sony a7R3 using defused flash in Live-View Mode. The plant had four dozen blossoms, but the bee only worked the two half-opened buds where stamens were attached to the ovary. I guess that's when and where blossoms produce nectar. Observing this behavior, I tried to catch it in the afternoon, hoping it would produce a "good vibe" image. This was the best of about 50 candidates. For processing in Lightroom, I used about two dozen radial gradients to tone down background highlights and sharpen details in four areas of the bee: head, thorax, abdomen and wings. Sharpened only on bee.

ROLL CALL: NBCC OFFICERS, COMMITTEES AND APPOINTMENTS, 2018-'19**OFFICERS**

President
Toni Robinson

Vice President
Rich Chitty

Secretary
Sarah Salomon

Treasurer
Steve Parker

DIRECTORS

Robert Barkin
Kent Mason

Roy Sewall
Cherry Wyman

STANDING COMMITTEES**Competition**

Judy Switt*
Prints:
Dick Pelroy
Jim Turner
Nikos Zacharakis
Electronic:
Steve Lapidus
Willem Bier
John Willis

Education

Jill Randell*
Greg Holden
Alan Sislen
Roy Sewall
Kent Mason
Evelyn Jacob

Field Trips

Gail Bingham*
James Corbett
Jack Rosenberg
Dick Pelroy
Jean-Pierre Plé
Diane Poole
Tammy Trocki
Jim Turner
Beth Altman

Programs

David Terao*
Evelyn Jacob
Neil Hermansdorfer
John Norvell
Kent Mason
Diane Poole
Ray Whitman
Rich Chitty

Judges

Bruce Cyr*
Debbie Menditch
Kay Norvell
Tammy Trocki

Exhibits

Lester LaForce*
Dawn Sikkema
Sarah Salomon
Alan Simmons
John Willis
Guillermo Olaizola
Jack Rosenberg
Stan Collyer

Nature Visions

John Norvell*
Ray Whitman
Steve Silverman
Beth Altman
Guillermo Olaizola

Membership

Guillermo Olaizola*
Mark Segal

MPA

Carol Lee*
Stephanie Banks

SPECIAL COMMITTEES**Community Outreach**

Joel Hoffman*
Kent Mason
Jack Rosenberg
Bob Peavy
José Cartas
Judy Switt

Equipment

Robert Barkin*
Tom Marchessault
Neil Hermansdorfer
Steve Frahm
Steve Lapidus

Hospitality

Terry Van Houten*
Ira Adler
Jitesh Batra
Jim Render
Virginia Render
Geri Millman
Claudia Seelig
Ray Whitman

Photo Essay

Stu Mathison*
Stan Collyer
David Davidson
Tom Field
Morris Liss
John Willis
Lori Ducharme
Mark Segal
Nancy Wolejsza

End-of-Year

TBA

Strategic Planning

Toni Robinson*
John Telford
Bill Ho
Audrey Rothstein
Gail Bingham

OTHER APPOINTMENTS

Asbury Liaison
Rich Chitty

Church Liaison
Rich Chitty

Database Administrator
Bruce Cyr

Webmaster
Robert Barkin*
Tom Field

Share & Care
Pauline Jaffe

PSA Representative
Judy Burr

Facebook Group

Administrator
Gail Bingham*
Guillermo Olaizola

Lens & Eye
Cherry Wyman

Yahoo Group
Administrator
Bruce Cyr

Dinner
Reservations
Kay Norvell

GordieGram
Administrator
Gail Bingham*
Toni Robinson

* committee or group chair