

# The Lens and Eye



Volume 49 Number 4 | December 2013 | Editor: Lori Ducharme | Contact: [newsletter@nbccmd.org](mailto:newsletter@nbccmd.org) | [www.nbccmd.org](http://www.nbccmd.org)

## Calendar

### DECEMBER EVENTS

Dec 4 - Competition Night, 7:30pm. Topic: *In a Garden*; Judge: Kevin Hooker

Dec 11 - Program Night, 7:30pm. Topic: *Member Expo*.

Dec 18 - Board Meeting

Dec 25 - No Meeting (Christmas)

### JANUARY PREVIEW

Jan 1 - No Meeting (Happy New Year!)

Jan 8 - Competition Night (*2-month open*)

Jan 15 - Program Night

Jan 22 - Board Meeting

Jan 29 - Program Night

## In this issue...

How is the end of 2013 upon us already?! Before you get swept away in the holiday bustle, don't forget everything happening in NBCC this month. In addition to the "In the Garden" competition night, we have a unique "Member Expo" program on December 11 that is shaping up to be a must-see event. On a related note, remember that now is the time to get your photos and music selected for a photo essay if you're thinking about making a submission for the 2014 NBCC Photo Essay program.

Elsewhere in this issue, you'll read about field trips past (Longwood Gardens) and future (Baltimore's Mount Vernon district); a fabulous story about Jean Hanson's recent trip to Rapa Nui (Easter Island); and a few other treats and surprises.

As always, we welcome your contributions of articles, news, or suggestions for *The Lens & Eye*, including your own news about awards, gallery showings, or other recognition of your work. Don't be shy! You can reach us at [newsletter@nbccmd.org](mailto:newsletter@nbccmd.org). In the meantime, happy holidays to all!

—Lori Ducharme, Editor

## December Competition Topic:

### In a Garden

Photograph anything in a garden, scenic or close-up, alive or not. Must be taken on or after June 1, 2012.

Electronic image submissions are due by 7:30pm on Sunday, December 1.

NBCC, founded in 1965, meets most Wednesday evenings from September to May. Competition and program meetings are held in the fellowship hall of the Faith United Methodist Church, 6810 Montrose Ave., Rockville, MD. Membership meetings are open and guests are always welcome.

Membership in NBCC is capped at 165 members and we currently have a waiting list. For more information about the club and for an application, visit the Membership section of the club website at [www.nbccmd.org](http://www.nbccmd.org).



## December 4 Judge: Kevin Hooker

The judge for our December competition is Kevin Hooker. Kevin is a portrait photographer based in Rockville at Sly Horse Studios. He is trained as a classical artist, having worked in a wide variety of media from water colors to wood. He worked as a commercial artist as well as a commercial photographer before leaving the corporate world for his own business. ❖

## December 11 Program: Member Expo

In lieu of a formal educational program this month, we will feature a "Member Expo." This program will be an informal and non-competitive showcase of members' photographs – lots of them. Participants will display up to 12 of their own chosen photographs (no restrictions). The audience will get to learn more about fellow members and their interests, while picking up creative ideas and gaining inspiration.

The evening will proceed like this: up to 12 images from one member will be projected on the big screen for about 8 seconds each. The member can give us a brief explanation as the images begin and short comments as the images are being shown. At the end of the set, a designated NBCC advanced photographer will provide a very short comment. If time permits, we may take a question from the audience. Then we move on to the next member's set of 12 images. At the break and after the program, take the opportunity to share ideas and ask questions of the makers.

Prepare to be surprised at the quality and diversity of your fellow members' work. Undoubtedly we'll learn things from each other: places to go, techniques to explore, new avenues to creativity, etc. We encourage NBCC members to take advantage of this opportunity by participating in and attending this program.

If you're interested in participating but haven't submitted yet, see the recent GordieGram with submission requirements and specifications. Image sets are due by noon on December 9. Questions? Contact Tom Sullivan. ❖

## December Photo Opp: Wreaths at Arlington Cemetery

Remember, the January Club competition is a "two-month Open," meaning your entries must have been captured after November 7, 2013. Still looking for ideas? On December 14, the volunteer group Wreaths Across America will lay thousands of holiday wreaths on the headstones throughout Arlington National Cemetery, where they will remain until late January. The green wreaths with their bright red bows against the white headstones, framed by stark leafless trees, make for graphic and poignant photographs. ❖

## January Field Trip Preview: Mount Vernon (Baltimore)

Our January field trip will take place on Thursday, January 16 (with an alternate snow date of January 23) to the Mount Vernon historic district in Baltimore, MD. In addition to being the location of the first Washington Monument (erected in 1815), this small area is rich in 19th century architecture, from restored townhomes built in the mid-1800's to many cultural and religious institutions which have been preserved in their original grandeur. We have arranged for special access to four of the most photographic of these institutions: the Peabody Library, Mt. Vernon United Methodist Church, First & Franklin Presbyterian Church, and the Baltimore Basilica. We will meet at 10AM and visit each of these locations which are all within a few blocks of each other. There is ample pay parking and an excellent, funky restaurant where we will gather for lunch. We expect to conclude by 3 PM, allowing time to return to Bethesda before rush hour. Please look for further details in the January *Lens & Eye*. ❖

January

16

## Member News

NBCC members did very well at the Mid-Atlantic Chapter of PSA competition. John Norvell received First Place in Nature for his photograph *Hungry Puffin* and Judy Burr received First Place in Monochrome for her *Highland County Scene* which was also a finalist in the NBCC End of the Year Competition last June. Honorable mentions were also awarded to Jessyca Stansbury-McCargo, Art Hyder and Judy Burr. The winning images can be seen at [this link](#).❖



*Hungry Puffin*, © John Norvell



*Highland County Scene*, © Judy Burr

### Upcoming Competition Topics

Jan 2014: Two-Month Open  
Feb 2014: Night Photography  
March 2014: Entrances or Exits  
Apr 2014: Motion  
May 2014: Open

### Welcome New Member!

At your next NBCC meeting, please seek out and extend a warm welcome to new member **Dave Roberts**, the latest to be rescued from the waiting list.

## The Making of a Banner

Our famous silhouette banner is getting an update! The familiar NBCC banner – featured on the masthead of this newsletter, on our “thank you” coffee mugs, and in assorted other locations – includes silhouettes of actual NBCC members (take a closer look and see who you recognize!). But after several years, it’s time for an update. Ever wonder how it gets made? It begins with Chris Hannessian capturing several members in various poses (from realistic to silly) against a white background. The images below will give you an idea of the studio setup. Through the magic of Photoshop, they’ll be magically transformed, flipped, shrunk, and combined into a new banner. Stay tuned for the big reveal!



## Splinters from the Board

There was a discussion of the fact that quite a few members recently have not been present for competitions in which they entered, especially electronic competitions. This was seen as a problem as the absent members do not benefit educationally from the judging process nor do other members learn from the absent member in case he or she should be a place winner. It also can be disconcerting and disrespectful to a judge if a significant number of winners are not present for the judging process. It was decided to try to remedy the absentee behavior through meeting announcements, a GordieGram, and a *Lens and Eye* "splinters" paragraph, and to revisit the issue if necessary.

Other issues of Club etiquette were discussed and it was decided to address them via a GordieGram. Members will be asked not to park in spaces reserved for the pastor or church staff as it often happens that we share the church building on a Wednesday night with church staff. Also, members who must leave a meeting before it will end will be asked to do so during the break rather than in the middle of a presentation. Members also will be asked to continue their good manners of staying seated at the end of the program while the speaker/judge is thanked.

David Davidson will Chair a committee to plan for the NBCC 50th Anniversary, which will be next year.

Chris Hanessian will chair a special committee to review/revise our competition categories. The members of the committee are Bruce Cyr, Cheryl Naulty, Bob Dargel, and Gail Bingham.

*- Carol Lee, NBCC President*

## NBCC Educational Programs Available

NBCC's Education Committee has planned a variety of formal and informal activities to help members improve their photographic and post-processing techniques. The following are highlights of upcoming and ongoing offerings. To see a complete list including the rest of the program year, visit the website at <http://nbccmd.org/docs/EducationPrograms.pdf>

**Program Title:** Lightroom Intensive

**Description:** This in-depth and hands-on Lightroom workshop will cover all modules of the latest release of LR and get you comfortable using this powerful program for your image storage, management and editing needs. [Click here](#) to see a detailed description of the topics covered.

**When and Where:** This is a 3-day workshop: Dec 13 (6:30-10:30pm), Dec 14 (8:30am-5:30pm) and Dec 15 (8:30am-5:00pm); Sislen's studio

**Fee:** \$295, includes lunches and snacks (\$349 for non-NBCC members)

*To sign up, contact Alan Sislen ([Alan@AlanSislenPhotography.com](mailto:Alan@AlanSislenPhotography.com))*

**Program Title:** Studio Photography

**Description:** Studio workshop on posing and portrait photography under different studio lighting situations. Instruction by Chris Hanessian and Tatiana Watson.

**When and Where:** January 19, 1:00pm-5:00pm, Washington School of Photography

**Fee:** \$55 to cover cost of model, studio, and snacks

*To sign up, contact Chris Hanessian ([chris@snellcc.com](mailto:chris@snellcc.com))*



# Longwood Gardens Field Trip, Revisited

— Text and Photos by Cheryl Naulty

As part of the integrated program planning for the current year, the NBCC is trying to link education and field experience with club competition topics where members may demonstrate their resulting works. The October trip to Longwood Gardens in Kennett Square, PA was part of that strategy. In September, experienced garden photographers, Cynthia Keith and Melissa Clark, offered a wonderful presentation on an approach to photographing gardens. They described how to think about a garden as a series of rooms, some large and expansive and some more discrete and intimate. They illustrated their ideas with lovely garden scenes from around the country and even abroad. This was all designed to entice members to get out from behind the macro lens and participate in a firsthand experience at Longwood Gardens.



I think that strategy worked! The day dawned beautifully clear and warm. The route to Kennett Square was a quick 2 hours, leaving the interstate just across the Susquehanna River and traveling mostly through some lovely rural Maryland and Pennsylvania farm county. We all met, about 18 members with guests, prior to the opening at the entrance to the gardens. Access to the entire gardens and conservatory was easy with a small admission fee and a simple registration of our tripods, which we were able to use until noon in the conservatory and anywhere out of doors.

After confirming plans to meet for lunch in the restaurant on the grounds, everyone scattered to explore the multitude of formal and informal



gardens, the vast conservatory and multiple fountain displays. It was easy to get lost and stretch the imagination with scenes that included reflecting pools, a water lily garden and a whimsical children's garden, complete with "rain" and intermittently spouting fountains. Within the conservatory, we were provided with glorious background music from the Longwood Gardens' organ, playing selections from Verdi and Wagner. How could one ask for a better accompaniment for inspiring one's creative eye?

I don't know how each member visualized the gardens. I am certain that, with so many venues, few renditions will look alike. We provided the club with a taste of some of the resulting photographs by giving a brief slide show at the beginning of a later meeting. However, I am certain that many more creative and inspired photographs will appear as part of the December club competition, "In the Garden."



# Photo Essay 2014

## Essay Submissions due by End of December

Members thinking about participating in the March 9, 2014 NBCC Photo Essay Program must submit their "body of work" or draft essay to the Photo Essay Committee by the end of December. These submissions will be reviewed by a panel in January. The panel provides feedback and selects essays based on factors such as quality and appeal of images, coherence and interest of theme, music and overall variety in the essays. Members submit their final essays in February.



Whether you have ever created a photo essay or not, we encourage you to submit your favorite and/or best body of work to the committee. If you are new to photo essays, we will provide one-on-one instruction and help make photo essays a part of your toolkit. You can create essays using either Mac or PC software. If you are an experienced photo essayist, please submit a body of work or draft essay. If you are considering multiple topics for your essay, you can submit more than one body of work. Please also submit the background music file(s) you are considering.

## The NBCC Essay Program – A Great Opportunity

The photo essay is one of the best ways to display your photography. The essay can be posted on a website as a video, written onto a DVD for TV viewing, or distributed on any media as a video file for PC viewing. Unique among camera clubs in the area, NBCC's major photo essay program is presented in March of each year, showing the work

of its members. The intent is to help members develop photo essay skills and to enable members to show their work to their friends and families and to members of NBCC and other camera clubs in the area.



## Many Information Sources

Information about the procedures for preparing and submitting essays, and additional information about the art of photo essays, is available at: <http://nbccmd.org/photoessay.htm>. Examples of essay topics and links to essays from years past are in the September 2013 *Lens and Eye*. The present article features photos from John Pan's colorful essay, Rio Carnaval, from last year's essay program.



If you have any questions about the photo essay program, please contact any member of the essay committee: Stu Mathison, Willem Bier, Dave Davidson, Tom Field, John Pan and John Willis.

– *Stu Mathison, Photo Essay Committee Chair*



# Let's Talk about Instagram



Instagram

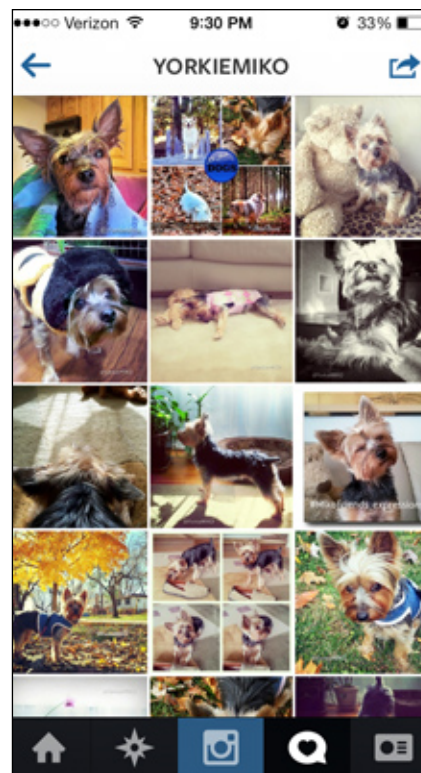
Are you looking for some inspiration for your photography, a new outlet for your creativity, or maybe just a few laughs? Instagram is a social media platform that puts a world of photographic fun in your pocket (or wherever you keep your smartphone). Instagram is really two apps in one. Its camera app, with its square-format photos and its menu of creative filters, revolutionized smartphone photography. But its real power is as a social media platform, connecting people all over the world in the common language of photography. To me, Instagram is like a "visual Twitter," except that instead of communicating in 140 characters, users communicate only via photos.

You can find virtually anything that interests you on Instagram, and "follow" those photographers or topics on your Instagram "feed." Each time you check your account, you'll see the images that were recently posted to those accounts. And while you're free to just be a bystander, it's really designed to be participatory. So you can upload and share photos to chronicle your travels, experiences, or any theme you want to embrace. You can also join in challenges where users contribute photos around a specific theme, and get feedback on your images.

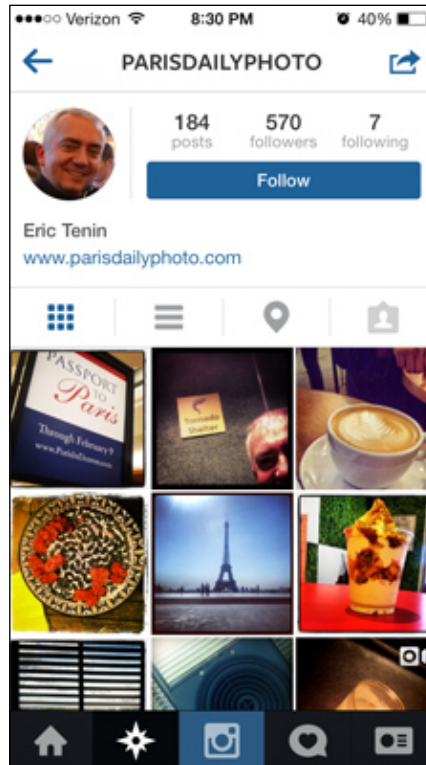
Like any other social media platform, it's easy to get overwhelmed when you first begin exploring Instagram, and to learn how to sift through all of the noise to find the accounts that match your interests. NBCC member Tatiana Watson maintains two Instagram accounts -- one that documents the adventures of her adorable Yorkie, and another that she uses exclusively as a creative outlet. If you're interested in getting started on Instagram, Tatiana's one-on-one help is available via the NBCC Education committee for a nominal fee. She can help you set up an account, and learn how to find people to follow, how to effectively tag your images, and how to get the most out of this photo-friendly social media platform.

Are you a current Instagram user? Are you interested in forming an interest group with other NBCC members? If so, contact Tatiana. If we identify enough users, we can also form an Instagram group – that is, a moderated forum (like a Facebook group) where NBCC members can follow each other online. Take a look!

– Lori Ducharme



*You can follow the exploits of Miko the Yorkie, on one of Tatiana Watson's Instagram accounts.*



*Want a daily Paris fix? There's an Instagram account for that...*

# Welcome to Rapa Nui!

– text and images by Jean Hanson

I had long hoped to someday view Easter Island (Rapa Nui), located about 2000 miles off the coast of Chile and currently a protectorate of that country. When the trip became available as an add-on to an OAT Adventure in Chile and Argentina, my friend and I jumped at the opportunity to visit this unusual island and learn about its ancient civilization. We were there in early October and found the temperatures to be mild (Spring in the Southern Hemisphere) but the winds to be blustery and constant.

The island is only 63 square miles and, in the four days we were there, we managed to discover most of it either by bus or on foot. Aside from the port town of Hanga Roa, it is sparsely settled and only minimally farmed. There are no leash laws and pet dogs, tame and friendly for the most part, freely roam the island. There are also few fences and large herds of semi-wild brown horses graze pretty much wherever they please. At the time we were there, an international surfing competition was in progress in the harbor. Only native Rapa Nui, those related to the original Polynesian settlers, can own land, so the many European and South American persons who have come to open restaurants and inns, or to start small farms, will always be renters.

Our explorations started on the Western shores where the Pacific Ocean waves break spectacularly against the rocky shoreline. Here we found many caves that may once have been used for human habitation. Here also we found many fallen Moai, eyeless and hatless images of early Rapa Nui leaders. It is believed that the earliest inhabitants came around 700-1100 CE from overpopulated islands further west in the Pacific



Ocean. They traveled in large rafts with all their household equipment including plants for agriculture, chickens and Polynesian rats. Once they landed and became established, they multiplied quickly, stressing the available resources. There were no large animals for a food source, trees cut for houses and for bark cloth clothing did not re-grow and the local fish population was subject to high levels of Ciguatera poisoning. Clans began to war with each other and competitions ensued to control the food supply.

Meanwhile, many of the natives were involved with the production of the Moai, statues to represent and honor their deceased kings. These images, many of them as much as 40 feet high, were cut out of the volcanic stone in a large quarry, erected into a standing position and "walked" to various locations on the island. Some were positioned facing villages, to bestow good fortune on the inhabitants. Others were faced out to sea to petition the Gods for better luck for the islanders. The topknot or hat was a later and separate addition, also carved from the quarry stone and elevated with ropes to adorn the head of the statue. Eyes were also separate and were added to indicate that although the statue represented a dead leader, his spirit could still see.

At some point during the inhabitant's troubled history, and up until 1860, when it was ended by Christian missionaries, the cult of the bird-man existed. Each year a representative from each of the warring clans was selected to swim through shark-infested waters to Motu Nui, a nearby inlet which was the nesting place of the Sooty Tern. Each candidate then had to steal an egg from a tern's nest and swim back with it in a special mask he wore to carry it safely. The first man to return with an unbroken egg was the winner, was given control of food supplies for the island for the coming year and could direct resources to his own clan.





The first European contact with the island came on April 5 (Easter Sunday) 1722 when Dutch navigator, Jacob Roggeveen's ship visited for a week. He named the place Easter Island and made an informal survey of it, assessing the population at about 3,000 and declaring most of the island to be under cultivation. Other foreign ships attempted to land but were rebuffed by hostile and suspicious islanders. In 1862, however, Peruvian slave traders struck Easter Island, abducting and killing about half the population. Islanders sent to work in Peruvian mines were later freed due to international protests. When they were returned to the Island, they brought smallpox back with them, further decimating the fragile population. The first Christian missionary, Eugene Eyraud, arrived in 1864 and attempted to convert the remaining population. He left, unsuccessful, but returned in 1866 to complete his task. He, however, was then suffering from tuberculosis which the Rapa Nui caught from him, resulting in the deaths of 1/4 of the remaining 1200 person population.

Chile annexed Easter Island in 1888. The native population was confined to the settlement at Hanga Roa and the rest of the island was rented as a sheep farm until 1953. The island was managed by the Chilean Navy until 1966 when it was reopened and the native peoples were given Chilean citizenship. It was named a UNESCO World Heritage site in 1995. In a 2009 census, its population totaled 4781, a mix of Rapa Nui, European and Amerindian.

Most of the island is now park land and open to tourists. We visited the original quarry and several sites where Moai have been repaired and reinstalled. We toured earthen dugouts by the shore where the bird men slept before their competition. On our last night on the island, we bought tickets to an "Authentic



Native Dance Show." Our group of eight crowded with a couple hundred other persons into a bar/restaurant with a centrally located stage. A band played and a dozen or so attractive and fit young dancers, clothed in impossibly feathery costumes, sang and danced. Members of the audience were invited to get up on the stage and dance along so their friends could take their pictures. I could not help but think of those brave first settlers, Polynesians on a raft in uncharted waters, landing on the rocky shores. How things have changed! ❖



## PSA News

---

Each month, a copy of the *PSA Journal* is made available at Club meetings for NBCC members to view, borrow, and share. The article of most interest in the November *PSA Journal* for NBCC members, I think, is Bill Barnett's ***The Making of Vietnam: A Photographer's Stories***. The author starts with a bit of history on slide dissolve shows that we all remember. He points out that because of the new technology available today, we have to make an effort to move beyond older formats of "slide shows" and use a different approach. As he says, that doesn't mean using every dissolve/transition available in the program you use, but to capture better and more varied photos and video clips. He adds that we need to vary the pace, use Ken Burns effects to animate still photographs and alternate background music with live narration and sound effects.

The author provides his advice for doing research on your travel destination, and he recommends taking photo tours, because the guides know where the good photos are and that can save you time for photography instead of looking for the best places. Of course, there are some excellent photo guides available, but when going to the places Bill does, a personal guide could certainly be an advantage. By knowing what is available, one can also make special requests. Bill travels light with a mirrorless camera with an electronic viewfinder which can operate in live mode all the time. He feels he can react more quickly without carrying a lot of gear and can concentrate on photography. His camera also takes video, but he limits that use to short segments. He does carry a laptop and backups his work twice every day.

As he reviews his images, he sees what story is developing and starts to organize his presentation into categories like markets, traffic, etc. While his presentations are primarily for gatherings like the NECCC and PSA and are longer than the essays in NBCC's annual program, his advice can be applied to any length essay. Bill is a Mac user who makes use of Lightroom® and Photoshop® for processing his photos and FotoMagico to put his shows together. His emphasis is on being creative and

having fun, but he makes excellent programs. He provides a list of resources in his article.

That article leads me into advertising the PSA Photo Travel Essay Competition, which is open to all Individual PSA members. As you may recall, our own Nancy Wolejsza won First Place in the competition for 2013 and received a nice plaque for her efforts. The deadline is June 1 and the time limit is 5 minutes. There are 3 categories for this competition—Color in North America, Color Anywhere in the World outside North America, and Monochrome. Consider entering this competition (for which there is no fee); it's an opportunity to showcase your photos in a different way. More information is available from your PSA Representative and on the PSA website's Photo Travel Division section.

If you are a Topaz user, you may be interested in the review of Topaz Clarity in the November *PSA Journal*. There is also an interesting article about photographing rodeos with both color

and monochrome illustrations. The article on the 2013 PSA International Exhibition shows the top images in the Divisions of PSA. Total figures show 17000 images from 3200 photographers from 63 countries, 35 US States and 4 Canadian Provinces. All the photos can be seen on the PSA website.

The reaction to Adobe's new subscription policy has been intense. Brad Ashbrook has written an article for PSA titled *Alternatives to the Cloud*. Two of them are Lightroom and Photoshop Elements which both include ACR®. The author discusses a variety of raw processors and other programs that support Photoshop compatible plugins. He also describes other photo editors that you might want to consider.

— Judy Burr, NBCC PSA Representative

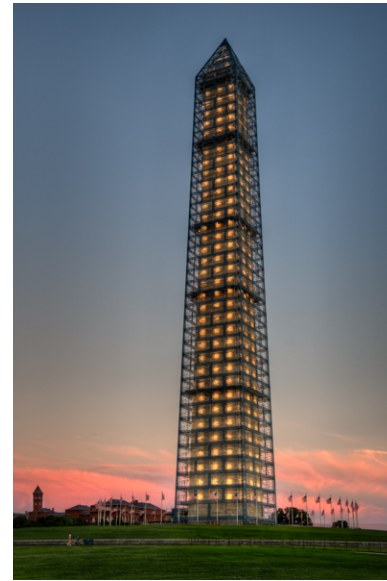




## November “City Life” Competition Winners



© Jack Tierney



© Chris Hanessian



© John Willis



© Beth Altman



© Dick Pelroy



© Norm Zober



# Results of Competition for November 2013 - City Life

**Competition Judge: Josh Taylor**

## PRINTS

### *Novice Traditional (16 entries)*

1st	Beth Altman	Bus Stop
2nd	Larry Mars	Working with Columbus
3rd	Kay Norvell	Railroad Sweeper
HM	Joanne Mars	Street Performers
HM	Larry Mars	Modern Day Bricklayer

### *Advanced Traditional (15 entries)*

1st	Dick Pelroy	End of Day at Nat'l Gallery
2nd	Cheryl Naulty	Walking Her Dog
3rd	Jack Rosenberg	South Beach Diner
HM	Cheryl Naulty	Open for Business
HM	Jack Tierney	Young Shoppers at City Market

### *Novice Unrestricted (no entries)*

### *Advanced Unrestricted (19 entries)*

1st	Chris Hanessian	Out for a Stroll
2nd	Bill Seelig	Dial 911
3rd	Stan Collyer	Stepping Up
HM	Carol Walsh	Multiple Generations
HM	Dawn Sikkema	Cycling Home
HM	Willem Bier	Easy Out



© Melissa Clark

## ELECTRONIC IMAGES

### *Novice Traditional (16 entries)*

1st	Norm Zober	Cab Ride in Havana
2nd	Alex Karlin	Delft 3
3rd	Claudia Seelig	It's a Fantasy
HM	Ellen McGovern	Grenada Procession
HM	Kay Norvell	Dublin Artist

### *Advanced Traditional (28 entries)*

1st	Jack Tierney	Best Friends on Parade
2nd	Bob Peavy	Comparing Notes
3rd	Jack Rosenberg	Havana Street Scene
HM	Stan Collyer	Three Cyclists
HM	Mark Segal	Window Washer
HM	Al Tanenholtz	Downtown Washington DC
HM	Rebecca Tidman	Man at Delhi Train Station
HM	Jack Tierney	Street Troubador
HM	Jean Yuan	Night Snack

### *Novice Unrestricted (5 entries)*

1st	John Willis	Girls at Smithsonian Fountain
2nd	Bob White	I See a Fish!

### *Advanced Unrestricted (37 entries)*

1st	Melissa Clark	Powell Street Duo
2nd	Lori Ducharme	Steel City Duck
3rd	Ira Adler	Edward Hopper Nighthawks
HM	Gail Bingham	Chessmen in Stockholm Park
HM	José Cartas	Easter in Corfu
HM	Bruce Davis	Laneway Artist
HM	James Hammack	Handing out Menus
HM	Evelyn Jacob	Art Meets Life
HM	Chuck Lee	Charleston Tourists
HM	Carol Walsh	Coffee Break

# Cumulative NBCC Competition Scores for 2013-2014

(through November 2013)

PRINTS		ELECTRONIC IMAGES	
Novice Traditional	Advanced Traditional	Novice Traditional	Advanced Traditional
24 Larry Mars	37 Cheryl Naulty	28 Ellen McGovern	28 Jack Tierney
18 Beth Altman	19 Dick Pelroy	20 Claudia Seelig	22 Stan Collyer
16 Joanne Mars	15 Jack Tierney	15 Sergiy Glushchak	20 Jack Rosenberg
14 Paul Taylor	14 Stan Collyer	14 Ray Whitman	16 Chet Stein
14 Kay Norvell	10 Gail Bingham	12 Morris Liss	14 Rebecca Tidman
10 Ray Whitman	8 Stu Mathison	12 Louise Roy	12 Al Tanenholtz
9 Steve Lapidus	8 Jack Rosenberg	10 Mike Abbott	9 Alex Guo
6 Mike Fleming	6 Al Tanenholtz	10 Norm Zober	9 Janet Myder Hammack
6 Louise Roy	6 Art Hyder	9 Ken Goldman	9 Bob Peavy
	6 Chet Stein	9 Alex Karlin	8 Art Hyder
	6 Chuck Bress	8 Joan Linderman	6 Melissa Clark
	6 Ken Briefel	6 Joanne Mars	6 David Davidson
		6 Kay Norvell	6 Jay Gartenhaus
		6 Jean-Pierre Plé	6 Cynthia Hunter
			6 Carol Lee
			6 Kent Mason
			6 Mark Segal
			6 Jean Yuan
Novice Unrestricted	Advanced Unrestricted	Novice Unrestricted	Advanced Unrestricted
10 Toni Robinson	37 Chris Hanessian	19 Toni Robinson	27 Lori Ducharme
	17 Stan Collyer	10 Joan Linderman	22 José Cartas
	16 Dick Pelroy	10 John Willis	22 Chuck Lee
	14 Lester LaForce	9 Mike Abbott	20 Dawn Sikkema
	12 Willem Bier	9 Bob White	14 Ira Adler
	12 Gail Bingham	8 Steven Lapidus	14 Evelyn Jacob
	9 Bill Seelig		12 Bruce Davis
	6 Mark Segal		12 James Hammack
	6 Bruce Cyr		12 Sarah Salomon
	6 Carol Walsh		12 Carol Walsh
	6 Dawn Sikkema		10 Melissa Clark
			6 Gail Bingham
			6 Cynthia Hunter
			6 Janet Myder Hammack
			6 Dick Pelroy
			6 Roy Sewall

## 2013-2014 NBCC Board of Directors, Standing, and Special Committees

<b><u>President</u></b> <i>Carol Lee</i>	<b><u>Vice President</u></b> <i>David Davidson</i>	<b><u>Secretary</u></b> <i>Bruce Cyr</i>	<b><u>Treasurer</u></b> <i>Bill Olson</i>	<b><u>Directors</u></b> <i>Gordie Corbin</i> <i>Bob Dargel</i>	<i>Kent Mason</i> <i>Bob Peavy</i>
<b><u>Programs</u></b> <i>Paul Taylor</i> Gail Bingham Steve Gelband Kent Mason John Norvell Toni Robinson Jack Rosenberg Ray Whitman  <i>Voting members in bold</i>	<b><u>Membership</u></b> <i>Chuck Lee</i>  <b><u>Exhibits</u></b> <b><i>Bill Olson</i></b> Sybl Erdman Jay Gartenhaus Dawn Sikkema Alan Simmons	<b><u>Competition</u></b> <i>Judy Switt</i>  <i>Prints</i> Bill Ho Bill Richards  <i>Electronic</i> Tom Field Willem Bier John Willis	<b><u>Judges</u></b> <i>Ken Goldman</i> Chet Stein Steve Robinson  <b><u>Webmaster</u></b> <b><i>Tom Field</i></b>  <b><u>Lens &amp; Eye</u></b> <b><i>Lori Ducharme</i></b>	<b><u>Hospitality</u></b> <i>Geri Millman*</i> <b><i>Bobbie Havel*</i></b> Terry van Houten Jim Render Virginia Render Ruth Sachs <i>*co-chairs</i>  <b><u>New Member Liaison</u></b> <b><i>Gail Bingham</i></b>	<b><u>Field Trips</u></b> <i>Cheryl Naulty</i> Ray Ao Silvie Ao Gail Bingham Bruce Davis Deeva Garel Cynthia Keith Dick Pelroy Steve Silverman Lorraine Vinci
<b><u>Education</u></b> <b><i>Chris Hanessian</i></b> Tom Field Tatiana Watson	Kent Mason Roy Sewall Alan Sislen	<b><u>Community Outreach</u></b> <b><i>Joel Hoffman</i></b> Ron Dietrich Chris Hanessian	Bob Peavy Meryl Silver Judy Switt Kent Mason	<b><u>Corbin-Switt Photo Essay</u></b> <b><i>Stu Mathison</i></b> Willem Bier David Davidson	Tom Field John Pan John Willis
<b><u>Competition Image Review</u></b> Gordie Corbin Tom Field Bob Peavy Stuart Glickman	Alan Sislen Judy Switt Anita Van Rooy	<b><u>Long-Range Planning</u></b> David Davidson Bob Dargel Lori Ducharme Tom Field	Chuck Lee Bob Peavy Paul Taylor	<b><u>PSA Representative</u></b> Judy Burr  <b><u>Awards Event Coordinator</u></b> John Villforth  <b><u>Database Administrator</u></b> Ken Goldman	

FIRST CLASS MAIL

